



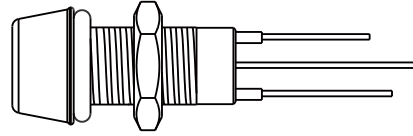
## CATALOGUE

## LED Indicator



## Range Overview

▾ Receptacle



## Specification

Identifications	M8 LED (Plastic or Metal)
Description	Receptacle with LED light
LED Size	Metal LED: $\phi 3\text{mm}$ , $\phi 5\text{mm}$ Plastic LED: $\phi 3\text{mm}$
Material	Connector Body: Metal: Copper Alloy, Nickel Plated Plastic: PC+ABS
Waterproof Rating	IP67
Temperature Range	Metal: $-20^{\circ}\text{C} \sim 105^{\circ}\text{C}$ Plastic: $-20^{\circ}\text{C} \sim 85^{\circ}\text{C}$
Operating Voltage	4V
Light Color	Red, Blue, Green, White, Yellow, Red / Green
More to know	Absolute Maximum Ratings at $T_a=25^{\circ}\text{C}$ <ul style="list-style-type: none"> <li>- Power Dissipation: 80~120mW Max</li> <li>- Peak Forward Current: 100mA Max</li> <li>- Continuous Forward Current: 20~35mA Max</li> <li>- Lead Soldering Temperature: <math>260^{\circ}\text{C}</math> for 5 Seconds</li> </ul>

# Ordering Information

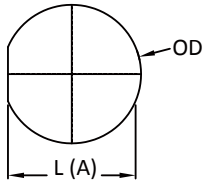
	1	2	3	4	5	6	7	8	9	10
<b>Specification</b> (L08) M8										
<b>Number of LED</b> (01) 1 LED										
<b>Light Color Style</b> (R) Red (B) Blue (G) Green										
			(W) White (A) Red/Green (Y) Yellow							
<b>LED Size</b> (A) $\phi$ 3mm										
			(B) $\phi$ 5mm							
<b>Electrical Type</b> (A) DC 4V										
<b>Assemble Style</b> > For Receptacle (S) Solder Type (P) 180° PCB Type										
<b>Housing Material</b> (M) Metal										
			(P) Plastic							
<b>Backshell</b> > For Receptacle (R) Circular / Rear Fastened										
<b>Waterproof Rating</b> (7) IP 67										
<b>More Information</b> > For Receptacle (001) Without Cable										

【Note】 Design and specification are subject to change without notice.

# Physical Dimension

## Receptacle

Panel Cut-Out

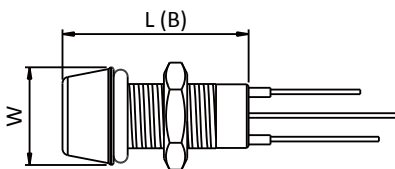


Size \ Dimension	L (A)	OD	L (B)	W
L08 - $\phi$ 3.0 (Plastic)	7.1	8.2	21.0	10.5
L08 - $\phi$ 3.0 (Metal)	7.1	8.2	20.0	10.5
L08 - $\phi$ 5.0 (Metal)	7.1	8.2	20.0	10.5

\* Maximum Panel Thickness: 6.5mm

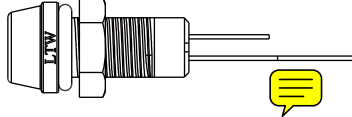
Unit: mm

Connector Dimension

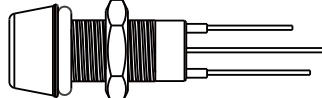


# Find Our Standard Products

## Receptacle

<p>• Plastic connectors</p>	<p><b>Receptacle</b></p>  <p><b>3</b> Choose the color of LED:                  - Mono-color: Red (R) / Blue (B) / Green (G) / White (W) / Yellow (Y)                  The size of plastic LED: <math>\phi</math>3mm</p>
LED M8 Plastic	L08-01 <b>3</b> AAS-PR7001

## Receptacle

<p>• Metal connectors</p>	<p><b>Receptacle</b></p>  <p><b>3</b> Choose the color of LED:                  - Mono-color: Red (R) / Blue (B) / Green (G) / White (W) / Yellow (Y)                  - Multi-color: Red &amp; Green (A)</p> <p><b>4</b> Choose the size of LED (<math>\phi</math>3mm (A) or <math>\phi</math>5mm (B))</p>
LED M8 Metal	L08-01 <b>3</b> <b>4</b> AS-MR7001

# Memo

Lined area for memo content, consisting of multiple horizontal dashed lines.



Scan to visit our website

**Amphenol LTW Technology Co., Ltd.**

5F-3, No.51, Sec.4, Zhongyang Rd., Tucheng Dist., New Taipei City 236, Taiwan  
Telephone: +886-2-77416888 Fax: +886-2-77416999  
[www.amphenolltw.com](http://www.amphenolltw.com)

**Kunshan Factory**

No. 62, DaTong Road, Development Zone, Kunshan City, JiangSu Province, 215333 China  
Telephone: +86-512-5761-0501  
Fax: : +86-512-5761-0515

**For further information, please contact :**

Sales & Marketing Department | Email : [sales@ltw-tech.com](mailto:sales@ltw-tech.com)