

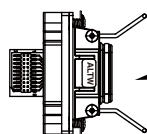
## HDMI Connector



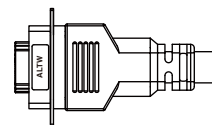
## Range Overview

### Receptacle to Overmolded with Cable

#### Rectangle Type

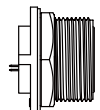


Receptacle

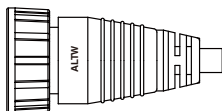


Overmolded with Cable

#### Circular Type

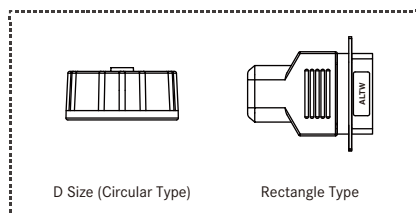


Receptacle



Overmolded with Cable

### Accessories



D Size (Circular Type)

Rectangle Type

## Specification

Identifications	HDMI connector
Description	Receptacle Overmolded with Cable
Current Rating / Data	0.5A
Material	Contacts: Phospor Bronze Connector Body (Housing): PBT Shell: Brass
Waterproof Rating	IP67 (Mated Waterproof)
Temperature Range	Receptacle: -20°C~80°C Overmolded with Cable: -20°C~80°C
Contact Resistance	≤ 20 mΩ
Insulation Resistance	≥ 100 mΩ at DC500V
More to know	Standard Cable Length: 01~05M

# Ordering Information

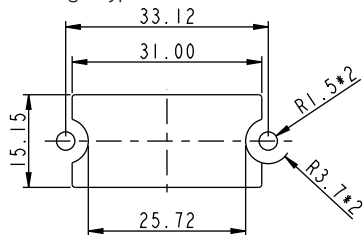
	1	2	3	4	5	6	7	8	9	10
<b>Specification</b>										
(HJ) HDMI Jack										
(HP) HDMI Plug										
<b>Number of Contacts</b>										
(19) 19 Contacts										
<b>Connector Body (Style)</b>										
> For Receptacle										
(P) Front Fastened										
> For Overmolded with Cable										
(A) With Strain Relief										
<b>Connector (Housing) Gender</b>										
(M) Male (Plug)										
(F) Female (Jack)										
<b>Contact Gender</b>										
(M) Male (Stamp)										
(F) Female (Stamp)										
<b>Assemble Style</b>										
> For Receptacle										
(R) 90° PCB Type										
(P) 180° PCB Type										
> For Overmolded with Cable										
(M) Overmolded with Cable										
<b>Mating Style</b>										
(Q) Latch										
(S) Screw Thread										
<b>Backshell</b>										
> For Receptacle										
(S) Rectangle										
(C) Circular										
> For Overmolded with Cable										
(L) Straight										
<b>Waterproof Rating</b>										
(7) IP 67										
<b>More information</b>										
> For Receptacle										
(001), (002).....										
Without Cable : Different Versions										
> For Overmolded with Cable										
(□)+(■) : Cable Type + Cable Length										
e.g. (A01) = UL20276 Cable + 1M										
□ : Cable Type										
■ : Cable Length										
(A) UL20276 Cable From 1M to 5M										
e.g. (01) = 1M										

【Note】 Design and specification are subject to change without notice.

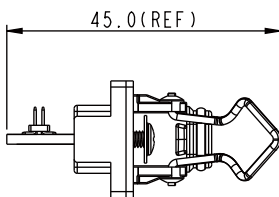
## Physical Dimension

### Receptacle

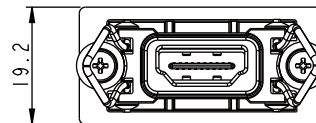
Panel Cut-Out  
 Rectangle Type



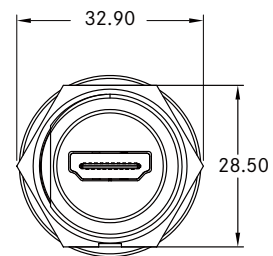
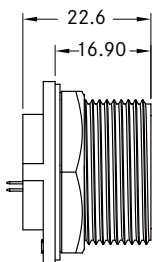
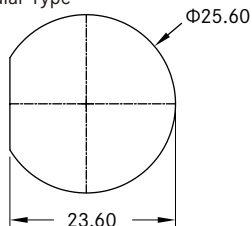
Connector Dimension



Connector Dimension

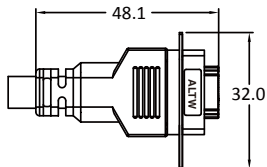


Circular Type

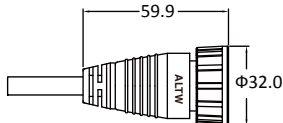


\* Unit: mm

### Overmolded with Cable



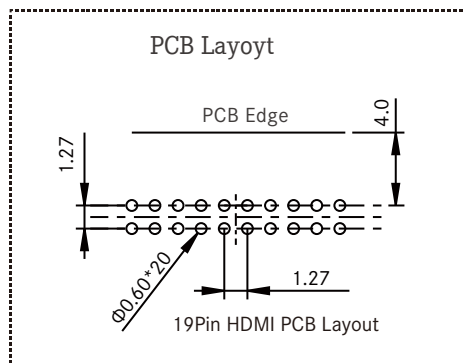
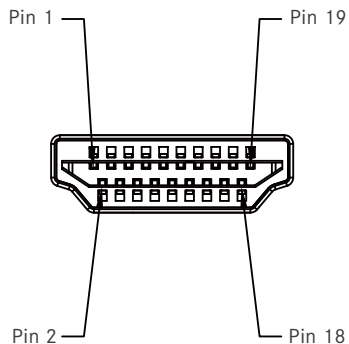
Rectangle Type



Circular Type

\* Unit: mm

## Contact Configuration

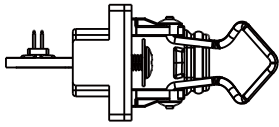


\* Unit: mm

[Note] This only shows contact configuration of Jack as your reference.

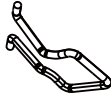
# Product Features

## Receptacle



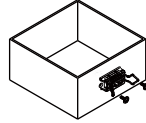
Rectangle Type

### Mating Style 7



Latch (Q)

### Connector Body(Style) 3

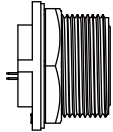


Front Fastened (P)

### Backshell 8



Rectangle (S)



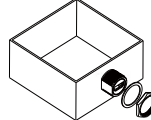
Circular Type

### Mating Style 7



Screw Thread (S)

### Connector Body(Style) 3



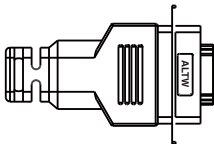
Front Fastened (P)

### Backshell 8



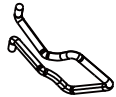
Circular (C)

## Overmolded with Cable



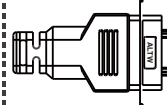
Rectangle Type

### Mating Style 7



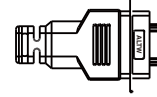
Latch (Q)

### Connector Body(Style) 3

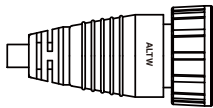


With Strain Relief (A)

### Backshell 8



Straight (L)



Circular Type

### Mating Style 7



Screw Thread (S)

### Connector Body(Style) 3



With Strain Relief (A)

### Backshell 8

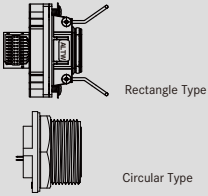
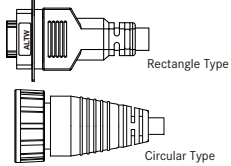


Straight (L)

【Note】 Design and specification are subject to change without notice.

## Find Our Standard Products

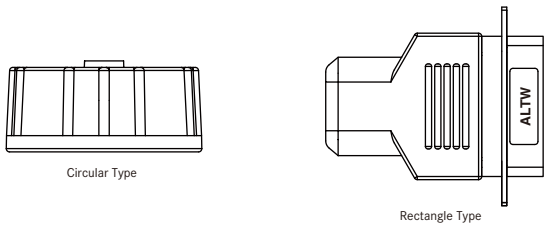
### Receptacle and Mating Pair

<ul style="list-style-type: none"> <li>• Female Connector (Housing)</li> <li>• Female Contacts</li> <li>• Latch</li> <li>• Screw Thread</li> </ul>	<b>Receptacle</b> →  Rectangle Type Circular Type	<b>Overmolded with Cable</b>  Rectangle Type Circular Type	<b>Field Installable</b>
Connector Style	Female Connector ( <b>F</b> ) Female Contacts ( <b>F</b> )	Male Connector ( <b>M</b> ) Male Contacts ( <b>M</b> )	Male Connector ( <b>M</b> ) Male Contacts ( <b>M</b> )
Rectangle Type	HJ-19PFFR-QS7001	HP-19AMMM-QL7A <b>XX</b> *	-
Circular Type	HJ-19PMFP-SC7001	HP-19AFMM-SL7A <b>XX</b> *	-

\* **XX**: Choose UL20276 cable and select the cable length from 01~05m

## Accessories

### Waterproof Cap

 Circular Type Rectangle Type				
Size	Mating Pair	Mating Style	Mating Pair (Gender)	P/N
D Size (Circular Type)	Receptacle	Screw Thread	Male	CAP-WADMSMA 1
Rectangle Type	Receptacle	Latch Type	Female	CAP-WHDFLPA 1