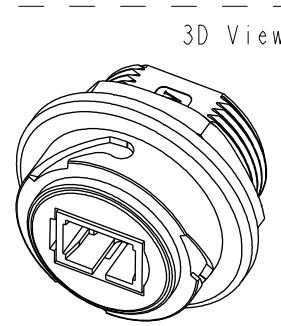
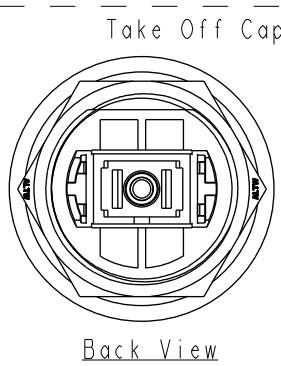
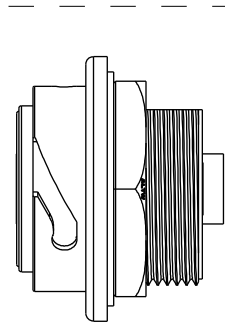
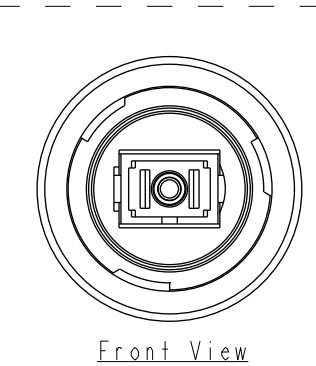
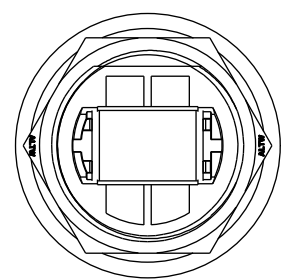
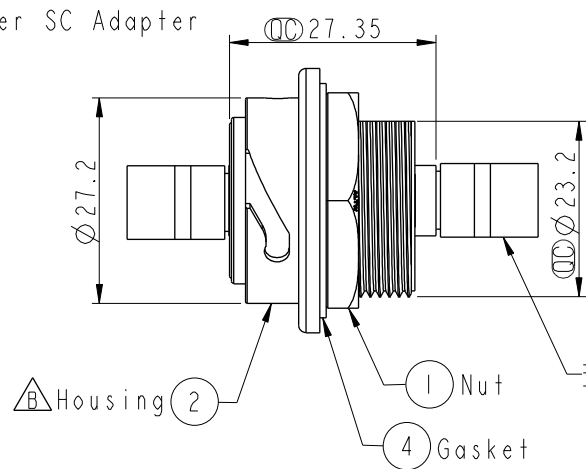
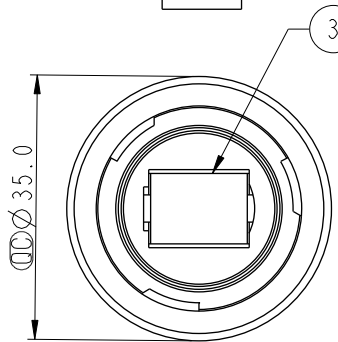
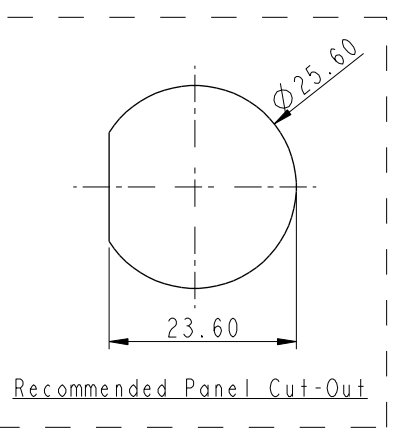
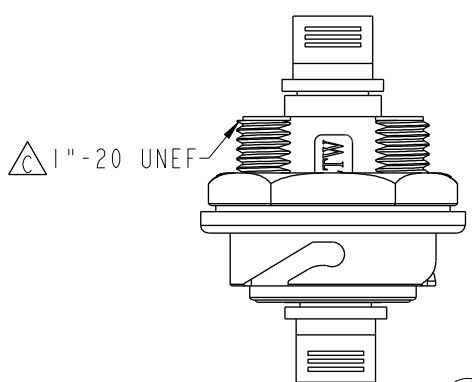
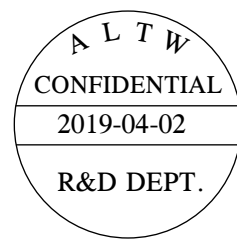


THIS DOCUMENT IS SUBJECT TO CHANGE WITHOUT NOTICE. IT IS CONFIDENTIAL AND A PROPERTY OF Amphenol LTW. DISCLOSURE TO THIRD PARTY HAS TO BE AUTHORIZED BY Amphenol LTW.

REV.	ECN NO.	DATE	SIGN	DESCRIPTION
B	LEN1330110	2013/03/27	Mila	Change Housing
C	LEN1560150	2015/06/03	Vicky	Add The Thread Size
D	CI90517	2019/04/02	Vicky	Change Note



Note:
* \varnothing Important Dimension.
* Wapterproof Rate: IP67, Mated.
* Nut: Thermoplastic, Black.
* Housing: Thermoplastic, Black.
* Fibre Adapter: SC Adapter.
* Gasket: Rubber, Gray.
* For Panel Thickness Max 4.0mm
* Gasket and Nut are packed separately in PE bags.

UNIT:mm		TITLE Optical Fiber Panel Type SC Adapter Conn.			
TOLERANCE		SCALE 1:1	SIZE A4	SHEET 1	OF 1
.X .XX .XXX ANGLES	± 0.25 ± 0.1 ± 0.05 $\pm 1^\circ$	REV. D	WC-REV. B.2	\varnothing Inspection item	

Amphenol LTW
安費諾亮泰企業股份有限公司

ITEM NO FB-SMRSFJ-TC7001	DRAWN BY Vicky	DATE 2019-04-02
DWG NO FB-SMRSFJ-TC7001	CHECKED BY Rita	DATE 2019-04-02
CUSTOMER ALTW	APPROVED BY Max	DATE 2019-04-02