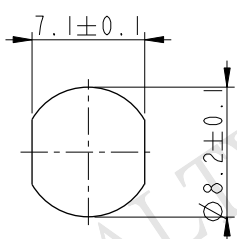
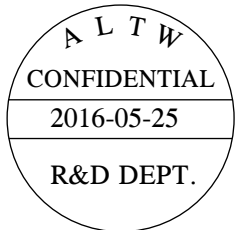
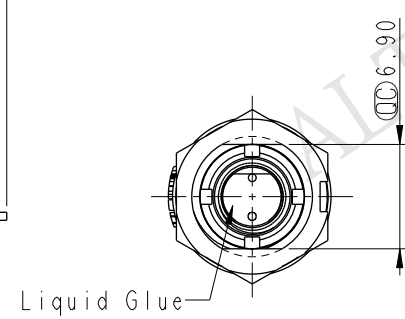
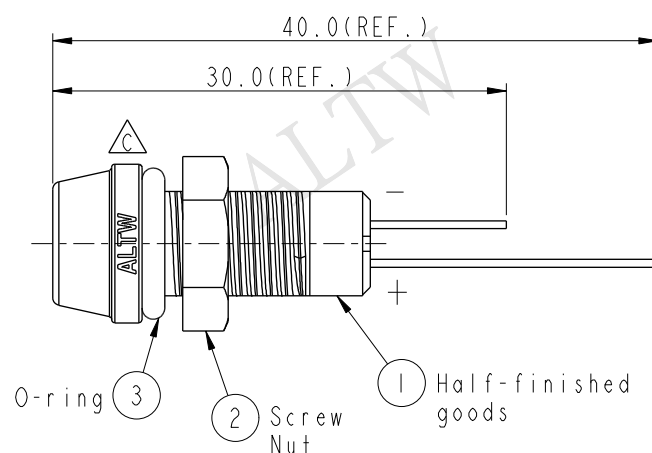
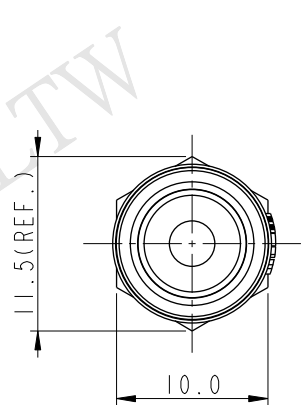
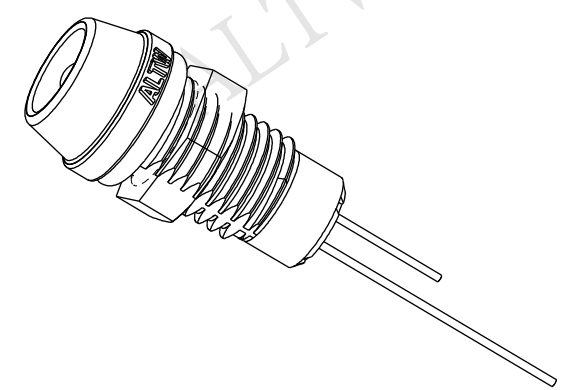
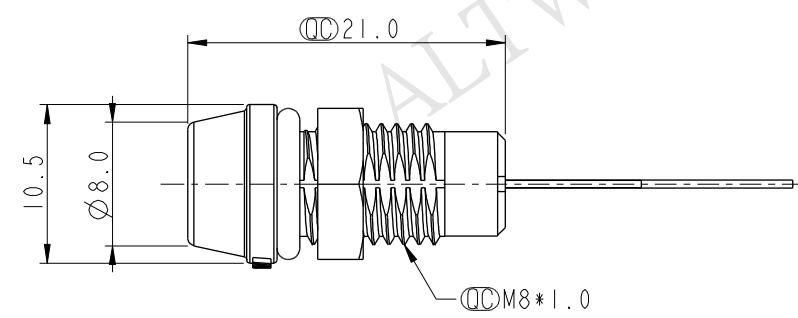


THIS DOCUMENT IS SUBJECT TO CHANGE WITHOUT NOTICE. IT IS CONFIDENTIAL AND A PROPERTY OF Amphenol LTW. DISCLOSURE TO THIRD PARTY HAS TO BE AUTHORIZED BY Amphenol LTW.

REV.	ECN NO.	DATE	SIGN	DESCRIPTION
B	LEN-930469	2009/03/04	ZhaoRongFu	Add Waterproof Rate
C	LEN1650814	2016/05/25	Ruru	Change Logo



Recommended Panel Cut-Out



- Notes:
- \*  $\varnothing$  Important Dimension To Check
  - \* Waterproof Rate: IP67
  - \* LED Holder: PC+ABS, Black
  - \* LED:  $\varnothing$ 3 mm, Blue(高亮度)
  - \* O-ring: EPDM, Black
  - \* Screw Nut: Nylon+GF
  - \* Operating Voltage: DC 4V
  - \* Operating Temperature: -40~+80°C
  - \* For Panel Thickness 6.5mm Max.

UNIT:mm						TITLE Ø3mm Plastic LED ,Blue		ITEM NO L08-01BAAS-PR7001		DRAWN BY Ruru		DATE 2016-05-25	
TOLERANCE		.X ±0.25		.XX ±0.1		SCALE 2:1		DWG NO L08-01BAAS-PR7001		CHECKED BY Rita		DATE 2016-05-25	
ANGLES		.XXX ±0.05		° ±1°		REV. C		CUSTOMER ALTW		APPROVED BY Lisa		DATE 2016-05-25	
		SIZE A4		SHEET 1 OF 1		WC-REV. A.3							

Amphenol LTW  
安費諾亮泰企業股份有限公司

$\varnothing$  Inspection item