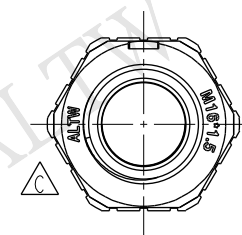
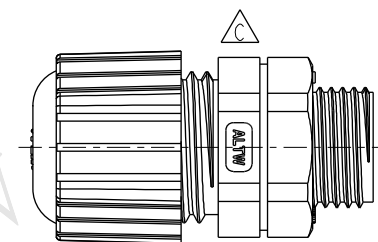
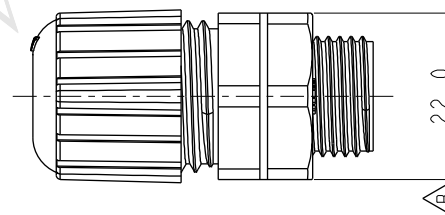
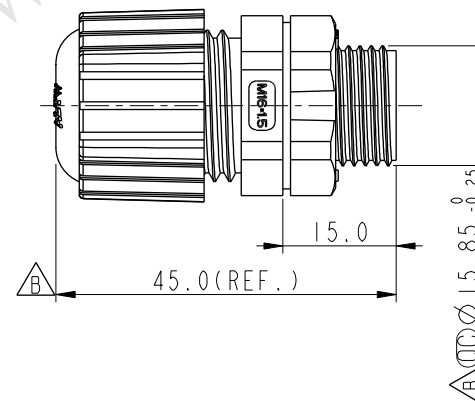
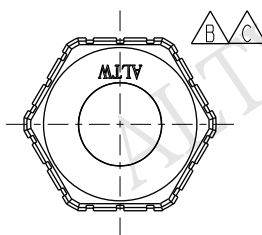
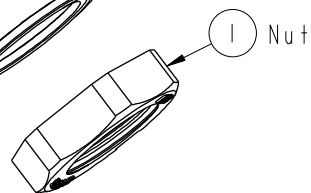
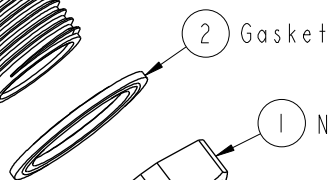
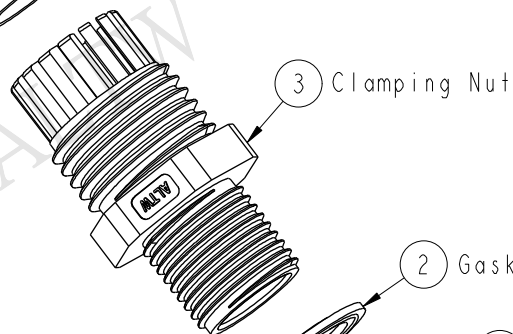
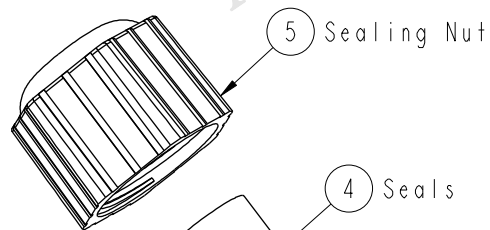


REV.	ECN NO.	DATE	SIGN	DESCRIPTION
B	ECN-0503095	2005/03/21	XLM	Ref. To ECN.Note
C	LEN1570042	2015/05/13	Ruru	Change Logo



- Note:
- \* (QC) Important Dimension
  - \* Nut: Nylon, Gray
  - \* Gasket: EPDM, Black
  - \* Clamp Ring: Nylon, Gray
  - \* Seals: EPDM, Black
  - \* Sealing Nut: Nylon, Gray
  - \* Cable Range:  $\varnothing 6.0 \sim \varnothing 10.0$
  - \* For Panel Thickness: 7.5mm

UNIT:mm	
TOLERANCE	
.X	$\pm 0.25$
.XX	$\pm 0.1$
.XXX	$\pm 0.05$
ANGLES	$\pm 1^\circ$

TITLE MI6*1.5 Cable Glands Assembly			
SCALE 4:5	SIZE A4	SHEET 1 OF 1	
REV. C	WC-REV. A.1	(QC): Inspection item	

Amphenol LTW  
安費諾亮泰企業股份有限公司

ITEM NO CSG-16M003	DRAWN BY Ruru	DATE 2015-05-13
DWG NO CSG-16M003	CHECKED BY Rita	DATE 2015-05-13
CUSTOMER ALTW	APPROVED BY Lion	DATE 2015-05-13

THIS DOCUMENT IS SUBJECT TO CHANGE WITHOUT NOTICE. IT IS CONFIDENTIAL AND A PROPERTY OF Amphenol LTW. DISCLOSURE TO THIRD PARTY HAS TO BE AUTHORIZED BY Amphenol LTW.