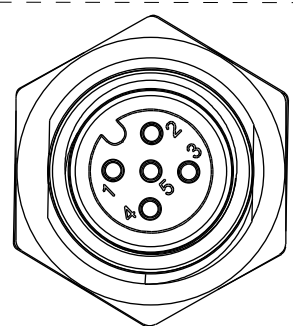
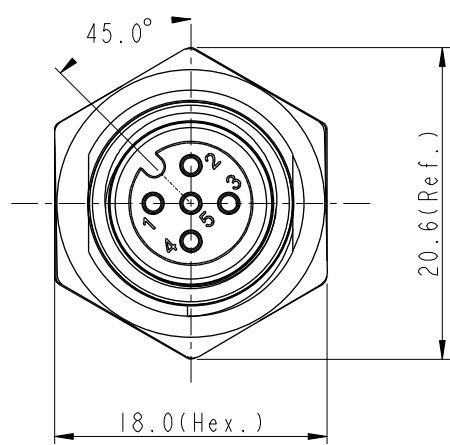
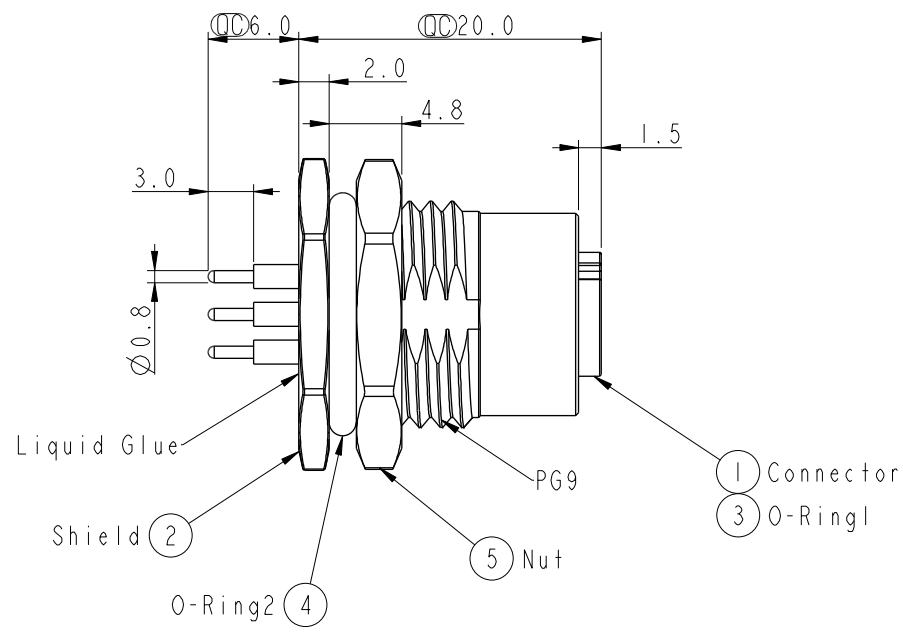
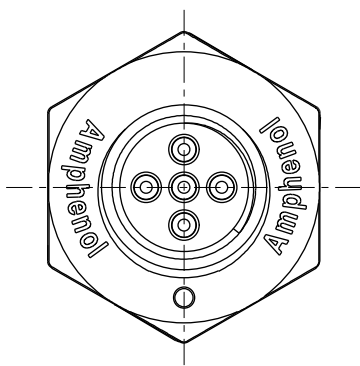


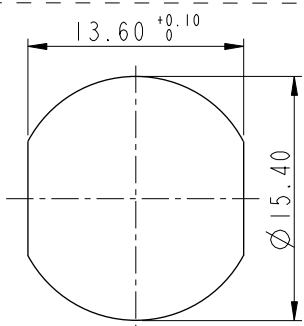
THIS DOCUMENT IS SUBJECT TO CHANGE WITHOUT NOTICE. IT IS CONFIDENTIAL AND A PROPERTY OF Amphenol LTW. DISCLOSURE TO THIRD PARTY HAS TO BE AUTHORIZED BY Amphenol LTW.

REV.	ECN NO.	DATE	SIGN	DESCRIPTION
A	Initial Release	2017/03/23	Frank Deng	Change Rev.01 To Rev.A
B	LEN1770181	2017/07/03	Frank Deng	Change Note
C	CI90517	2019/04/01	Vicky	Change Note

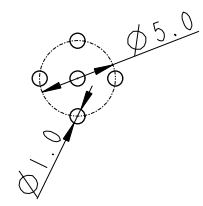
ALTW
CONFIDENTIAL
2019-04-01
R&D DEPT.



Pin Assignments
Front View



Recommended
Panel Cut-Out



PCB Layout

- Note:**
- * \varnothing Important Dimension.
 - * Waterproof Rate: IP68, Unmated.
IP68: 1M Depth Of Water In 24hours.
 - * Housing: Thermoplastic, Black.
 - * Pin: Copper Alloy, Gold Plated.
 - * Shield: Metal, Nickel Plated.
 - * O-Ring1: Rubber, Gray.
 - * O-Ring2: Rubber, Gray.
 - * Nut: Metal, Nickel Plated.
 - * For Panel Thickness Max 4.5mm.
 - * Nut are packed separately in PE bags.

UNIT:mm		TITLE NMEA2000, MICRO-C, PANEL,PCB TYPE 5PIN, F CONN F PIN, METAL		ITEM NO HMC-05PFFP-SF8001		DRAWN BY Vicky		DATE 2019-04-01	
TOLERANCE .X ±0.25 .XX ±0.1 .XXX ±0.05 ANGLES ±1°		SCALE 2:1		DWG NO HMC-05PFFP-SF8001		CHECKED BY Rita		DATE 2019-04-01	
REV. C		WC-REV. A.1		CUSTOMER ALTW		APPROVED BY Max		DATE 2019-04-01	
		SHEET 1 OF 1							
		QC: Inspection item							

Amphenol LTW
安費諾亮泰企業股份有限公司