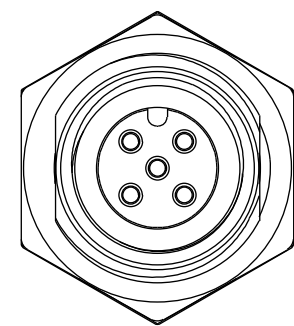
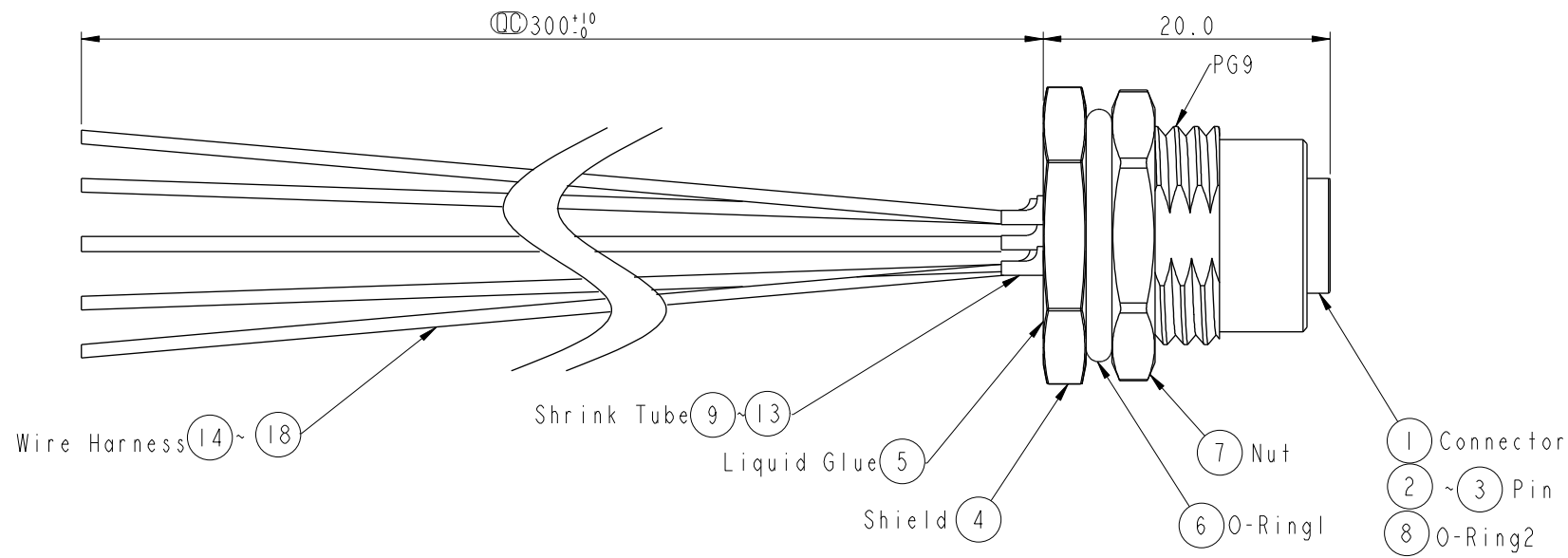
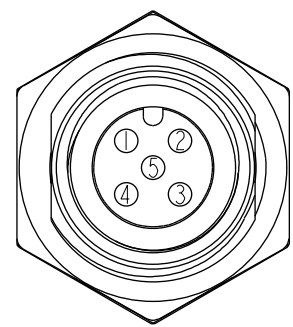
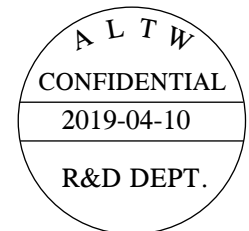


THIS DOCUMENT IS SUBJECT TO CHANGE WITHOUT NOTICE. IT IS CONFIDENTIAL AND A PROPERTY OF Amphenol LTW. DISCLOSURE TO THIRD PARTY HAS TO BE AUTHORIZED BY Amphenol LTW.

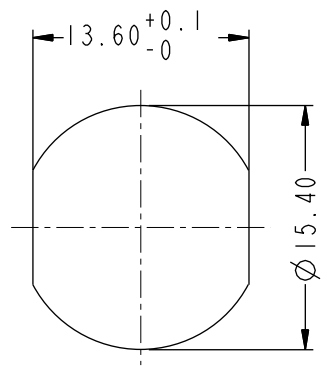
REV.	ECN NO.	DATE	SIGN	DESCRIPTION
B	LEN-7A0187	2007/09/29	Myrdal	Added Note
C	CI90517	2019/04/01	Vicky	Change Note



Conn.



Pin Assignments
Front View



Recommended Panel Cut-Out

5	Blue (22AWG)	藍
4	White (22AWG)	白
3	Black (18AWG)	黑
2	Red (18AWG)	紅
1	Green (22AWG)	綠
Conn.	Wire Color	
	Pin Out	

- △ Note:
- * Ⓢ Important Dimension.
 - * Waterproof Rate: IP68, Unmated. In 1 meter water within 24 hours
 - * Connector: Thermoplastic, Black.
 - * Pin: Copper Alloy, Gold Plated.
 - * Shield: Metal, Nickel Plated.
 - * Nut: Metal, Nickel Plated.
 - * O-Ring1: Rubber, Black.
 - * O-Ring2: Rubber, Green.
 - * For Panel Thickness Max 4.5mm

UNIT:mm		TITLE		ITEM NO		DRAWN BY		DATE	
		M12 Conn NMEA		MC-05PFFS-SF8001		Vicky		2019-04-10	
		Panel Screw 5Pin F Conn F Pin		DWG NO		CHECKED BY		DATE	
				MC-05PFFS-SF8001		Rita		2019-04-10	
				CUSTOMER		APPROVED BY		DATE	
				ALTW		Max		2019-04-10	

TOLERANCE

.X ±0.25

.XX ±0.1

.XXX ±0.05

ANGLES ±1°

SCALE 2:1

SIZE A4

SHEET 1 OF 1

REV. C

WC-REV. A.4

Ⓢ Inspection item

Amphenol LTW

安費諾亮泰企業股份有限公司

W10814-03-0001A2