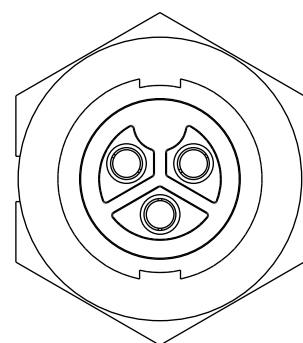
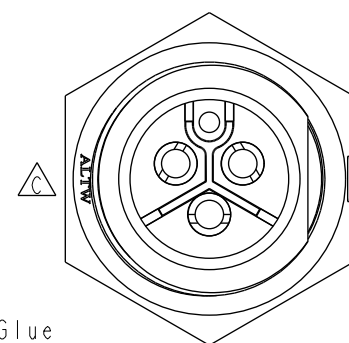
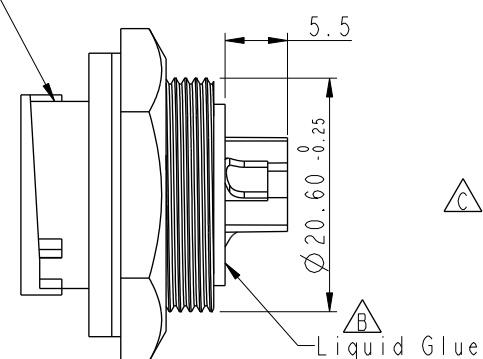


THIS DOCUMENT IS SUBJECT TO CHANGE WITHOUT NOTICE. IT IS CONFIDENTIAL AND A PROPERTY OF Amphenol LTW. DISCLOSURE TO THIRD PARTY HAS TO BE AUTHORIZED BY Amphenol LTW.

REV.	ECN NO.	DATE	SIGN	DESCRIPTION
B	LE3-9A0098	2009/10/20	Rita	Delete liquid no.
C	C200524	2020/04/21	Vicky	$\triangle C$ *5

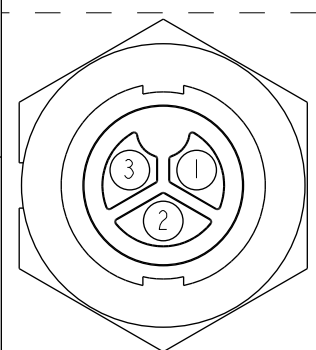
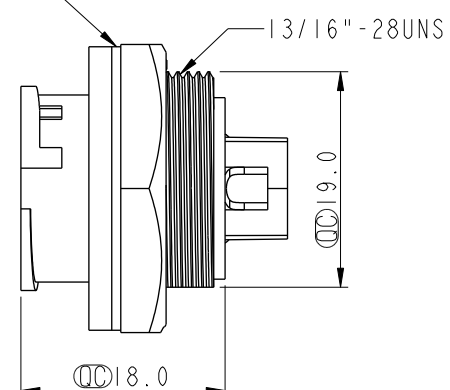


Connector ①

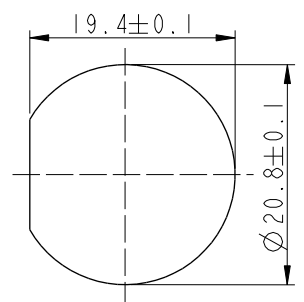


Gasket ③

② Nut



Pin Assignments
Front View



Recommended
Panel Cut-Out

Note:

- * CC Important Dimension To Check.
- * $\triangle C$ Waterproof Rate: IP67, Unmated
- * $\triangle C$ Connector: Thermoplastic, Black
- * Female Pin: Copper Alloy, Gold Plated
- * $\triangle C$ Gasket: Rubber, Gray
- * Maximum Panel Thickness: 4.5mm

UNIT:mm		TITLE PWR, 20A, 03P, REAR FASTENED M, F, SOLDER, 2LOCK		Amphenol LTW		ITEM NO PWC-03RMFS-LC7001	DRAWN BY Rita	DATE 2009-10-20
TOLERANCE .X ±0.25 .XX ±0.1 .XXX ±0.05 ANGLES ±1°		SCALE 3:2	SIZE A4	SHEET 1 OF 1	安費諾亮泰企業股份有限公司	DWG NO PWC-03RMFS-LC7001	CHECKED BY Vicky	DATE 2009-10-20
REV. C		WC-REV. A.3	CC : Inspection item			CUSTOMER ALTW	APPROVED BY Lion	DATE 2009-10-21