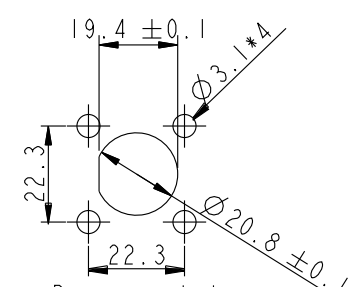
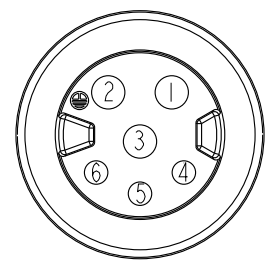
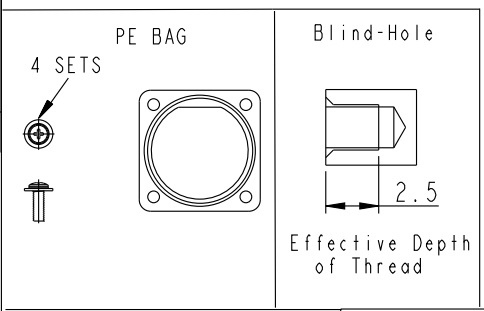
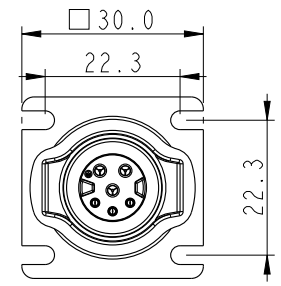
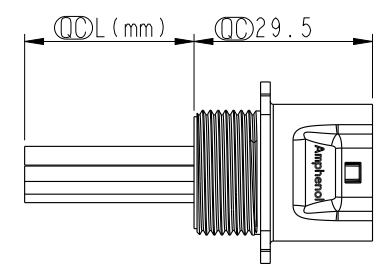
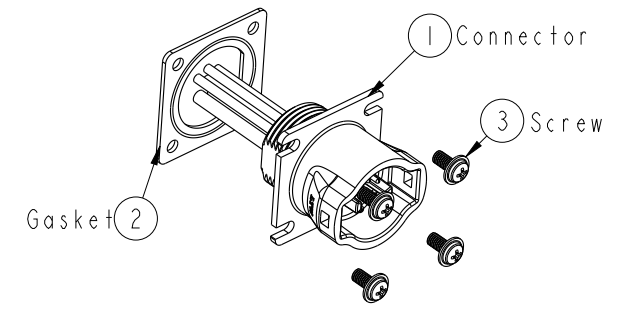
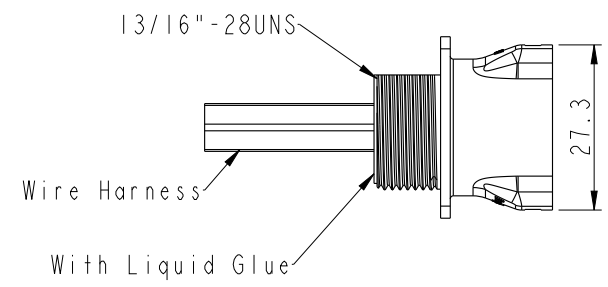


THIS DOCUMENT IS SUBJECT TO CHANGE WITHOUT NOTICE. IT IS CONFIDENTIAL AND A PROPERTY OF Amphenol LTW. DISCLOSURE TO THIRD PARTY HAS TO BE AUTHORIZED BY Amphenol LTW.

REV.	ECN NO.	DATE	SIGN	DESCRIPTION
A		2020/04/22	Peng	Initial Released

CBD-XXRFMS-RS8CX

06: 6Pin
 10: 100mm
 15: 150mm
 20: 200mm
 :
 A0: 1000mm
 Cable Pitch Unit=50mm
 Wire Length (L): 100~1000 mm



6	Black (20AWG)	黑
5	White (20AWG)	白
4	Green (20AWG)	綠
3	Blue (16AWG)	藍
2	Red (16AWG)	紅
1	Black (16AWG)	黑
Conn.	Wire Color	
Pin Out		

Note:
 * \varnothing Important Dimension To Check.
 * Waterproof Rate: IP68, Unmated.
 IP68: 1M depth of water in 24 hours
 * Connector: Thermoplastic, Black.
 * Male Pin: Copper Alloy, Gold Plated.
 * Gasket: Rubber, Black.
 * Wire Harness: UL1015
 * Blind holes for the screws used M3X0.5mm
 * Blind Hole Size M3X0.5mm
 * Screw Torque: 1.5~2kgf.cm
 * Wire harness Tolerance: 100mm ±10mm
 101~300mm ±15mm
 301~1000mm ±20mm
 * Prohibiting the use of place in oils

UNIT: mm
 TOLERANCE ±0.5

TITLE Middle Panel RBL F CONN M PIN			
SCALE 1:1	SIZE A4	SHEET 1 OF 1	
REV. A	WC-REV. .0	\varnothing : Inspection item	

Amphenol LTW
 安費諾亮泰企業股份有限公司

ITEM NO.	DRAWN BY Peng	DATE 2020-04-22
DWG NO. CBD-XXRFMS-RS8CX	CHECKED BY Feng_Li	DATE 2020-04-22
CUSTOMER ALTW	APPROVED BY Jerry	DATE 2020-04-22