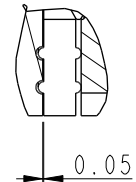
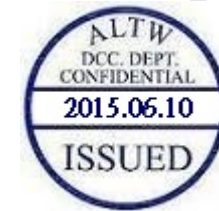
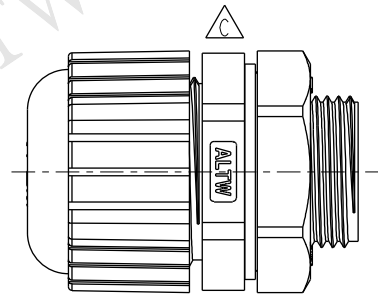
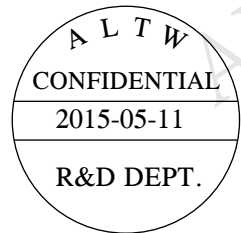
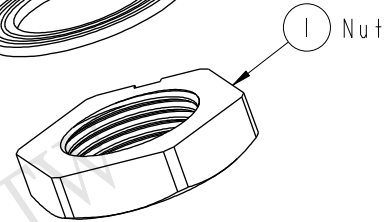
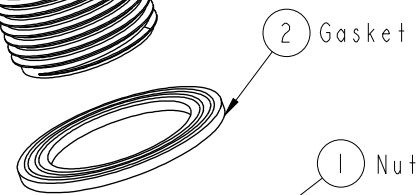
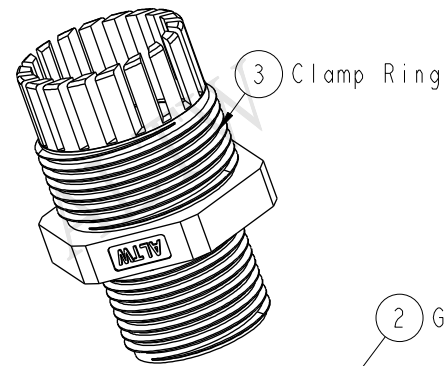
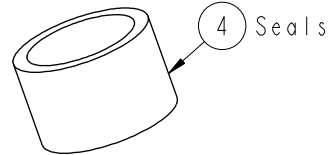
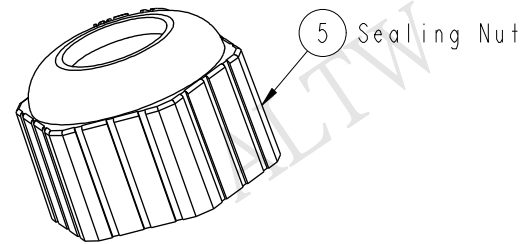
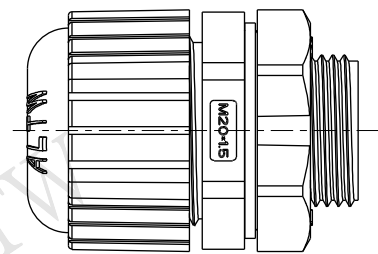
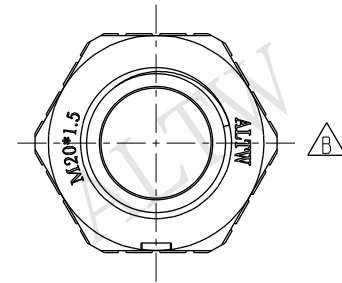
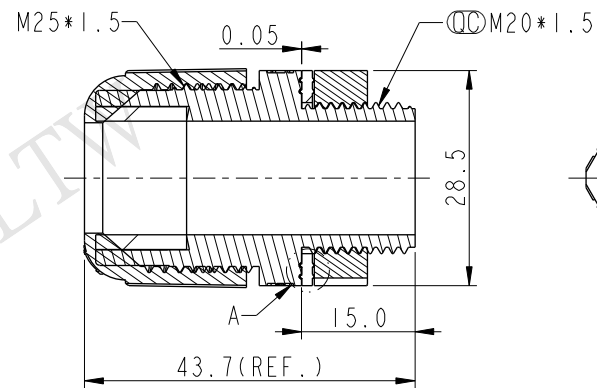
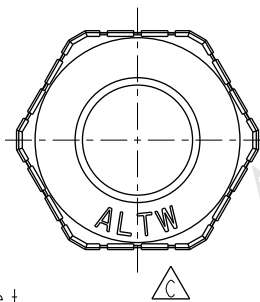



REV.	ECN NO.	DATE	SIGN	DESCRIPTION
A		2005/12/08	Chiu Chia Chi	Change Rev.01 to Rev.A
B	LEN14C0296	2014/12/03	Ruru	Change Nut Logo
C	LEN1560098	2015/05/11	Ruru	Change Logo



Detail "A"  
Scale 3:1



- Note:
- \* Waterproof Rate: IP68
  - \* Nut: Nylon, Gray
  - \* Gasket: EPDM, Black
  - \* Clamp Ring: Nylon, Gray
  - \* Seals: EPDM, Black
  - \* Sealing Nut: Nylon, Gray
  - \* Cable Range:  $\varnothing 10.0 \sim \varnothing 14.0$
  - \* For Panel Thickness: 6.2mm

UNIT : mm				TITLE M20 Cable Glands-Assembly			Amphenol LTW 安費諾亮泰企業股份有限公司		ITEM NO CSG-20M003		DRAWN BY Ruru		DATE 2015-05-11		
TOLERANCE .X ±0.25 .XX ±0.1 .XXX ±0.05 ANGLES ±1°		SCALE 4:5							SIZE A4		SHEET 1 OF 1		DWG NO CSG-20M003		CHECKED BY Rita
		REV. C		WC-REV. A.1		QC: Inspection item			CUSTOMER ALTW		APPROVED BY Lion		DATE 2015-05-11		
1		2		3		4		5		6		7		8 FMM10702-01-02A	

Amphenol LTW  
安費諾亮泰企業股份有限公司

THIS DOCUMENT IS SUBJECT TO CHANGE WITHOUT NOTICE. IT IS CONFIDENTIAL AND A PROPERTY OF Amphenol LTW. DISCLOSURE TO THIRD PARTY HAS TO BE AUTHORIZED BY Amphenol LTW.