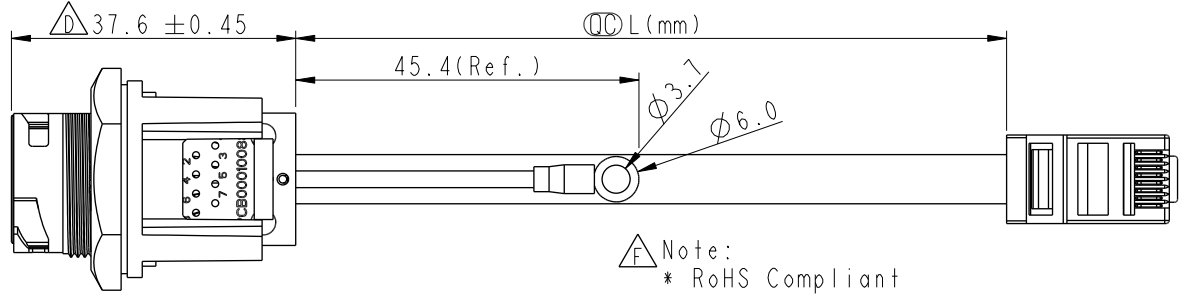
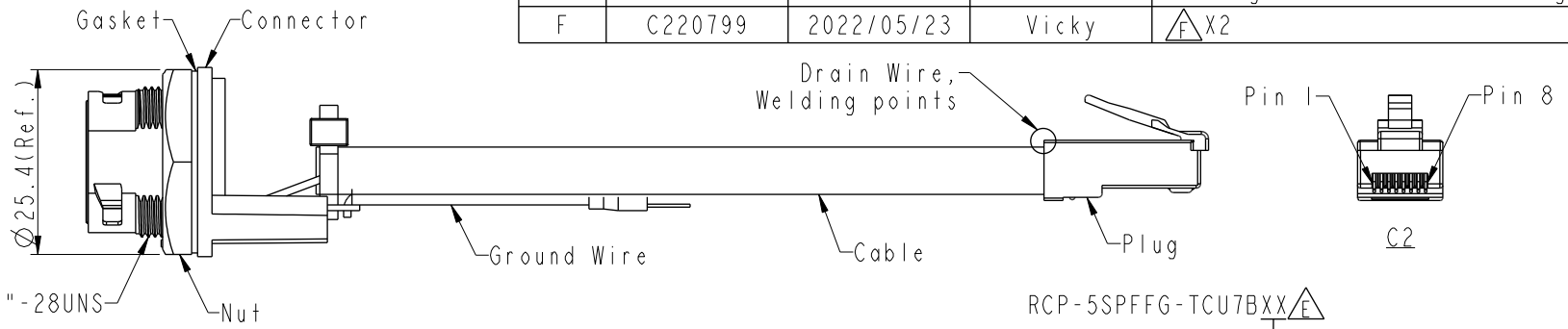
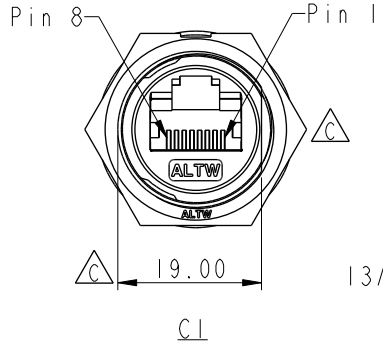


THIS DOCUMENT IS SUBJECT TO CHANGE WITHOUT NOTICE. IT IS CONFIDENTIAL AND A PROPERTY OF Amphenol LTW. DISCLOSURE TO THIRD PARTY HAS TO BE AUTHORIZED BY Amphenol LTW.

REV.	ECN NO.	DATE	SIGN	DESCRIPTION
D	LEN1810046/66	2017/11/28	Jalam	Change The Tolerance
E	E191612	2019/09/16	Ruru	Drawing Code Unified Writing
F	C220799	2022/05/23	Vicky	\triangle F X2

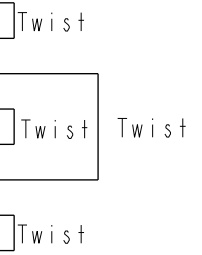
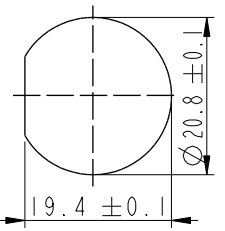


RCP-5SPFFG-TCU7BXX \triangle

XX: 100~1000mm
 10: 100mm
 15: 150mm
 20: 200mm
 }
 95: 950mm
 A0: 1000mm
 Cable Pitch Unit=50mm

- \triangle Note:
- * RoHS Compliant
 - * \odot Important dimension
 - * C1
 Waterproof rate: IPX7, unmated
 Housing: Thermoplastic, Black, RJ45 jack, Shielded
 Nut: Thermoplastic, Black
 Gasket: Rubber, Gray
 - * C2
 Waterproof rate: Non-Waterproof
 Plug: RJ45, Shielded
 - * Use with waterproof cap or dust cap
 Panel thickness max: 1.8mm
 - * Use without waterproof cap or dust cap
 Panel thickness max: 3.0mm
 - * Gasket and nut are assembled on connectors
 - * Wire: UL1015, 20AWG
 - * Cable: Cat.5E, 24#*4P+MY+D+AL, PVC Jacket, Black, OD6.5mm
 - * Cable length tolerance: 100mm: ±10mm
 100mm < L ≤ 300mm: ±15mm
 300mm < L ≤ 1000mm: ±20mm

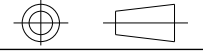
Ground	Wire(20AWG)	Green 綠	Terminal
Shield	Drain Wire	接地線	Shield
8	Brown	棕	8
7	White/Brown	白/棕	7
6	Green	綠	6
5	White/Blue	白/藍	5
4	Blue	藍	4
3	White/Green	白/綠	3
2	Orange	橘	2
1	White/Orange	白/橘	1
C1	Wire Color		C2
	Pin Out		



Recommended Panel Cut-Out

UNIT: mm

TOLERANCE	
.X	±0.25
.XX	±0.1
.XXX	±0.05
ANGLES	±1°



TITLE RJ, C PLASTIC, C5E SHLD FRONT FASTENED, F, PNL W/G, 3LOCK \triangle F			
SCALE	1:1	SIZE	A4
REV.	F	WC-REV.	B.5
		\odot	Inspection item

Amphenol LTW
 安費諾亮泰企業股份有限公司

ITEM NO	RCP-5SPFFG-TCU7BXX	DRAWN BY	Ruru	DATE	2019-09-16
DWG NO	RCP-5SPFFG-TCU7BXX	CHECKED BY	Rita	DATE	2019-09-16
CUSTOMER	ALTW	APPROVED BY	Max	DATE	2019-09-16