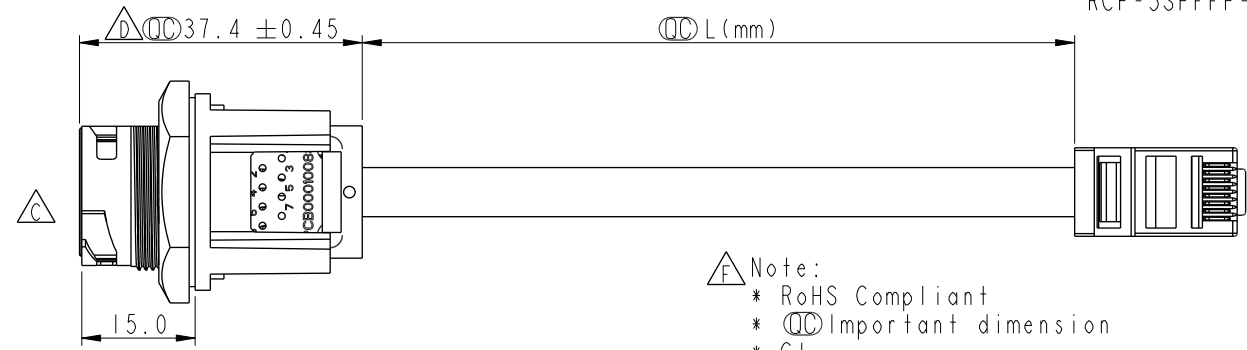
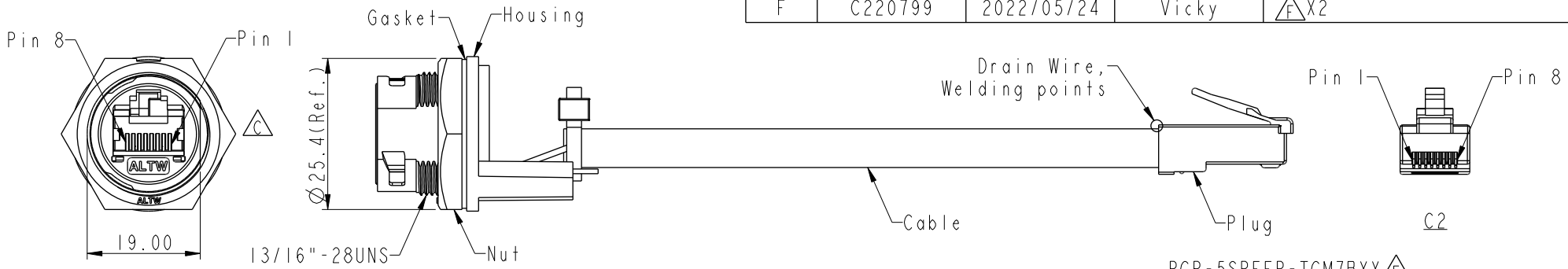


THIS DOCUMENT IS SUBJECT TO CHANGE WITHOUT NOTICE. IT IS CONFIDENTIAL AND A PROPERTY OF Amphenol LTW. DISCLOSURE TO THIRD PARTY HAS TO BE AUTHORIZED BY Amphenol LTW.

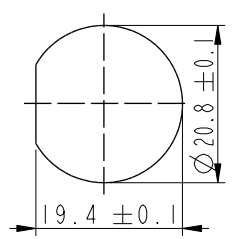
REV.	ECN NO.	DATE	SIGN	DESCRIPTION
D	LEN1810014~016	2017/11/28	Jalam	Modify the Tolerance
E	E191612	2019/09/16	Ruru	Drawing Code Unified Writing
F	C220799	2022/05/24	Vicky	△FX2



RCP-5SPFFP-TCM7BXX△E

XX: 100~1000mm  
 10: 100mm  
 15: 150mm  
 20: 200mm  
 ↓  
 95: 950mm  
 A0: 1000mm  
 Cable Pitch Unit=50mm

- △E Note:
- \* RoHS Compliant
  - \* Ⓞ Important dimension
  - \* C1  
 Waterproof rate: IPX7, mated  
 Housing: Thermoplastic, Black, RJ45 jack, Shielded  
 Nut: Thermoplastic, Black  
 Gasket: Rubber, Gray
  - \* C2  
 Waterproof rate: Non-Waterproof  
 Plug: RJ45, Shielded
  - \* Use with waterproof cap or dust cap  
 Panel thickness max: 1.8mm
  - \* Use without waterproof cap or dust cap  
 Panel thickness max: 3.0mm
  - \* Gasket and nut are assembled on connectors
  - \* Cable: Cat.5E, 24#\*4P+MY+D+AL, PVC Jacket, Black, OD6.5mm
  - \* Cable length tolerance: 100mm: ±10mm  
 100mm < L ≤ 300mm: ±15mm  
 300mm < L ≤ 1000mm: ±20mm



Shield	Drain Wire	接地線	Shield	
8	Brown	棕	8	Twist
7	White/Brown	白/棕	7	
6	Green	綠	6	Twist
5	White/Blue	白/藍	5	
4	Blue	藍	4	Twist
3	White/Green	白/綠	3	
2	Orange	橘	2	Twist
1	White/Orange	白/橘	1	
C1	Wire Color		C2	
		Pin Out		

Recommended Panel Cut-Out

UNIT: mm		TITLE	RJ, C PLASTIC, C5E SHLD FRONT FASTENED, F, PNL W/CABLE, 3LOCK △E	
TOLERANCE	.X ±0.25 .XX ±0.1 .XXX ±0.05 ANGLES ±1°	SCALE	1:1	SHEET 1 OF 1
		REV.	F	WC-REV. B.5
			Ⓞ: Inspection item	

**Amphenol LTW**  
 安費諾亮泰企業股份有限公司

ITEM NO	RCP-5SPFFP-TCM7BXX	DRAWN BY	Ruru	DATE	2019-09-16
DWG NO	RCP-5SPFFP-TCM7BXX	CHECKED BY	Rita	DATE	2019-09-16
CUSTOMER	ALTW	APPROVED BY	Max	DATE	2019-09-16