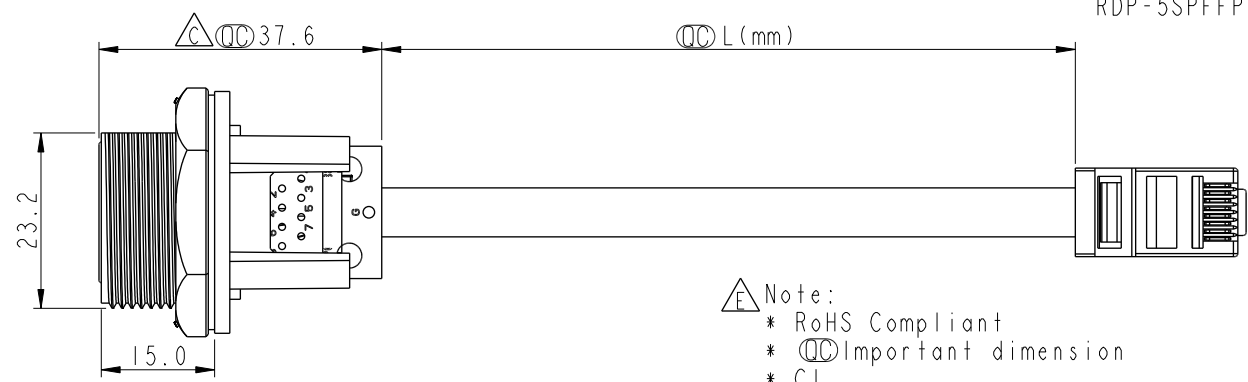
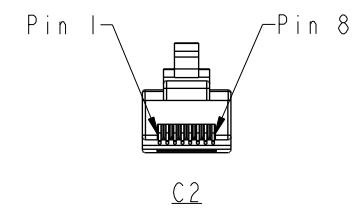
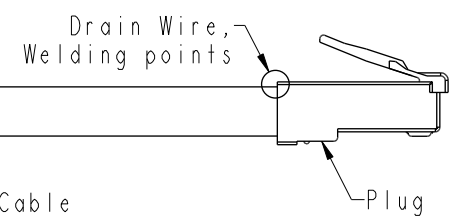
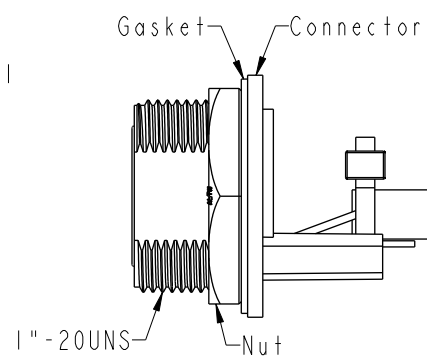
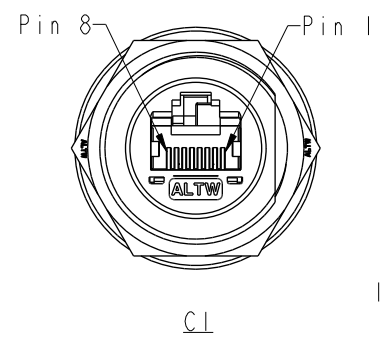


THIS DOCUMENT IS SUBJECT TO CHANGE WITHOUT NOTICE. IT IS CONFIDENTIAL AND A PROPERTY OF AMPHENOL LTW. DISCLOSURE TO THIRD PARTY HAS TO BE AUTHORIZED BY AMPHENOL LTW.

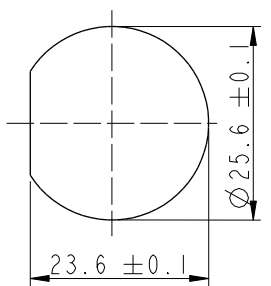
REV.	ECN NO.	DATE	SIGN	DESCRIPTION
C	LEN1810087	2017/11/29	Jalam	Modify The Tolerance
D	E191612	2019/09/16	Ruru	Drawing Code Unified Writing
E	C220800	2022/05/30	Vicky	$\triangle$ X2



RDP-5SPFFP-SCM7BXX  $\triangle$  D

XX:	100~1000mm
10:	100mm
15:	150mm
20:	200mm
95:	950mm
A0:	1000mm
Cable Pitch Unit=50mm	

- $\triangle$  Note:
- \* RoHS Compliant
  - \*  $\odot$  Important dimension
  - \* C1
    - Waterproof rate: IPX7, mated
    - Housing: Thermoplastic, Black, RJ45 jack, Shielded
    - Nut: Thermoplastic, Black
    - Gasket: Rubber, Gray
  - \* C2
    - Waterproof rate: Non-Waterproof
    - Plug: RJ45, Shielded
  - \* Use with waterproof cap or dust cap
    - Panel thickness max: 2.4mm
  - \* Use without waterproof cap or dust cap
    - Panel thickness max: 3.6mm
  - \* Gasket and nut are assembled on connectors
  - \* Cable: Cat.5E, 24#\*4P+MY+D+AL, PVC Jacket, Black, OD6.5mm
  - \* Cable length tolerance:
    - 100mm < L ≤ 300mm: ±10mm
    - 300mm < L ≤ 1000mm: ±20mm



Shield	Drain Wire	接地線	Shield	
8	Brown	棕	8	Twist
7	White/Brown	白/棕	7	
6	Green	綠	6	Twist
5	White/Blue	白/藍	5	
4	Blue	藍	4	Twist
3	White/Green	白/綠	3	
2	Orange	橘	2	Twist
1	White/Orange	白/橘	1	
C1	Wire Color		C2	
		Pin Out		

Recommended Panel Cut-Out

UNIT: mm		TITLE	RJ, D PLASTIC, C5E SHLD FRONT FASTENED, F, PNL W/CABLE, SCREW	
TOLERANCE		SCALE	SIZE	SHEET OF
.X	±0.25	1:1	A4	1 OF 1
.XX	±0.1	REV.	WC-REV.	
.XXX	±0.05	E	A.5	
ANGLES	±1°	$\odot$ : Inspection item		

**Amphenol LTW**  
安費諾亮泰企業股份有限公司

ITEM NO	RDP-5SPFFP-SCM7BXX	DRAWN BY	Ruru	DATE	2019-09-16
DWG NO	RDP-5SPFFP-SCM7BXX	CHECKED BY	Rita	DATE	2019-09-16
CUSTOMER	ALTW	APPROVED BY	Max	DATE	2019-09-16