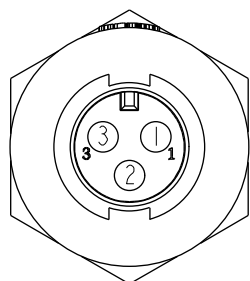
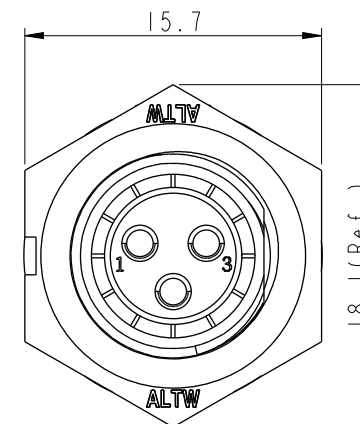
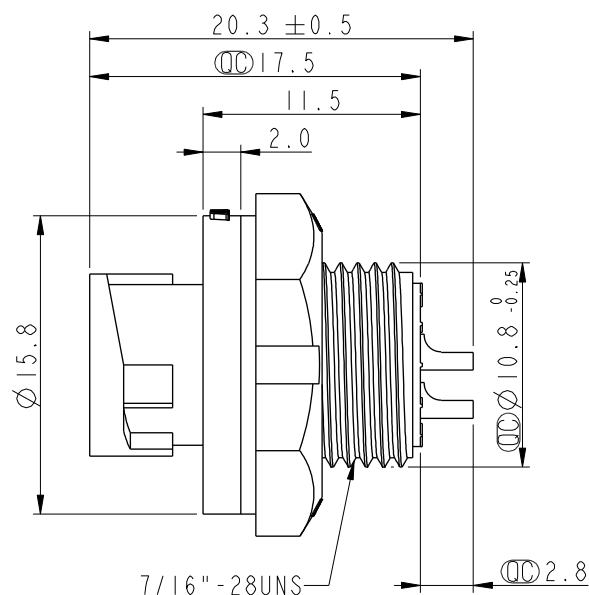
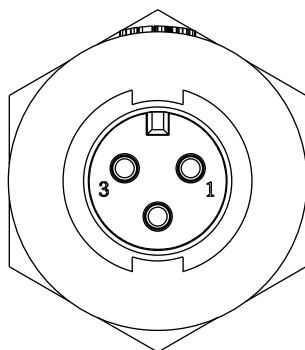
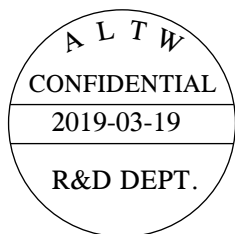
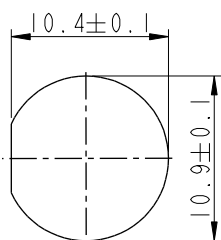


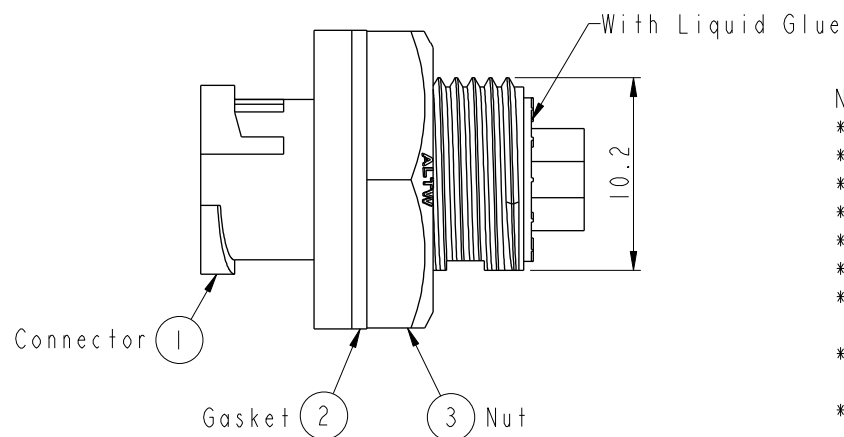
REV.	ECN NO.	DATE	SIGN	DESCRIPTION
A	Initial Release	2013/10/28	Ann	New Item
B	C190315	2019/03/19	Ruru	Modify Note & Add QC Dimension



Pin Assignments  
Front View



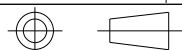
Recommended Panel  
Cut-Out



Note:

- \* Important Dimension
- \* Waterproof Rate: IP67, Unmated
- \* Housing: Thermoplastic, Black
- \* Pin: Copper Alloy, Gold Plated
- \* Nut: Thermoplastic, Black
- \* Gasket: Rubber, Gray
- \* Use with waterproof cap or dust cap  
Maximum Panel Thickness: 3.3mm
- \* Use without waterproof cap or dust cap  
Maximum Panel Thickness: 4.5mm
- \* Gasket and Nut are packed separately in PE bags

UNIT:mm



TOLERANCE  
.X ±0.25  
.XX ±0.1  
.XXX ±0.05  
ANGLES ±1°

TITLE  
Mini CNC Pin  
Panel Lock 3Pin M Conn M Pin

SCALE  
5:2

SIZE  
A4

SHEET  
1 OF 1

REV.  
B

WC-REV.  
A.1

Inspection item

Amphenol LTW  
安費諾亮泰企業股份有限公司

ITEM NO  
IAD-03RMMS-LC7001

DWG NO  
IAD-03RMMS-LC7001

CUSTOMER  
ALTW

DRAWN BY  
Ruru

CHECKED BY  
Rita

APPROVED BY  
Max

DATE  
2019-03-19

DATE  
2019-03-19

DATE  
2019-03-19