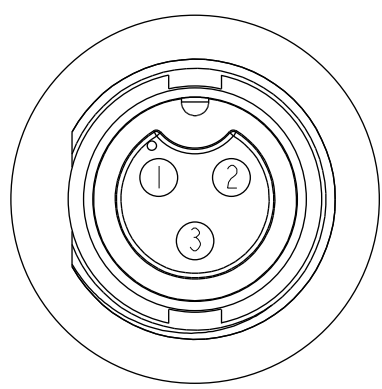
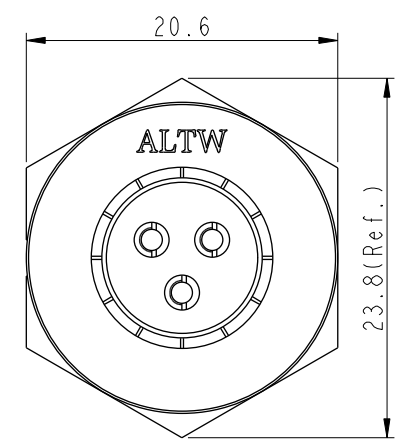
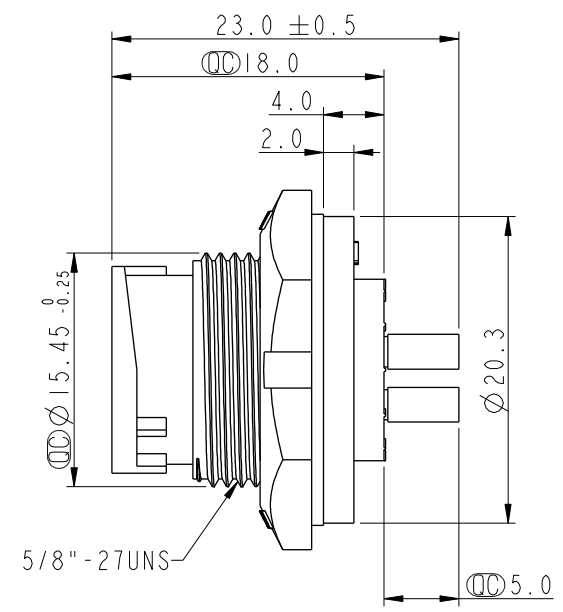
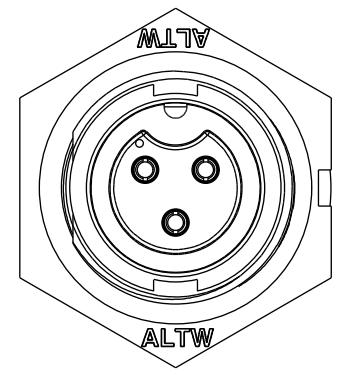


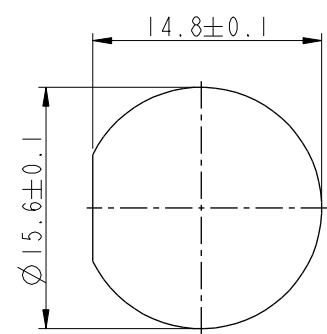
THIS DOCUMENT IS SUBJECT TO CHANGE WITHOUT NOTICE. IT IS CONFIDENTIAL AND A PROPERTY OF Amphenol LTW. DISCLOSURE TO THIRD PARTY HAS TO BE AUTHORIZED BY Amphenol LTW.

REV.	ECN NO.	DATE	SIGN	DESCRIPTION
A	Initial Release	2014/01/17	Ann	New Item
B	C190315	2019/03/19	Ruru	Modify Note & Add QC Dimension

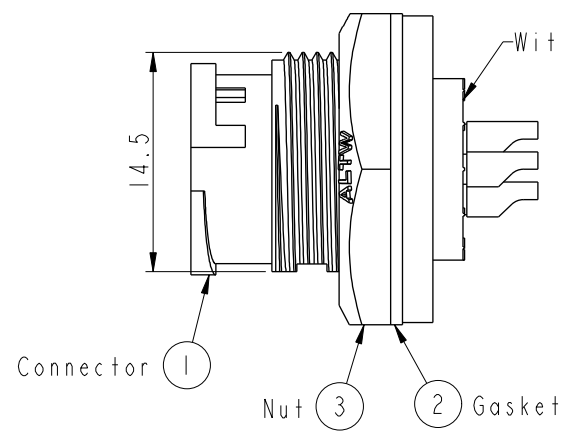
ALTW
CONFIDENTIAL
2019-03-19
R&D DEPT.



Pin Assignments
Front View



Recommended Panel
Cut-Out



- Note: Important Dimension
- * Waterproof Rate: IP67, Unmated
 - * Housing: Thermoplastic, Black
 - * Pin: Copper Alloy, Gold Plated
 - * Nut: Thermoplastic, Black
 - * Gasket: Rubber, Gray
 - * Use with waterproof cap or dust cap
Maximum Panel Thickness: 2.8mm
 - * Use without waterproof cap or dust cap
Maximum Panel Thickness: 4.0mm
 - * Gasket and Nut are packed separately
in PE bags

UNIT:mm				TITLE Standard CNC Pin Panel Lock 3Pin M Conn F Pin			Amphenol LTW 安費諾亮泰企業股份有限公司		ITEM NO IBD-03PMFS-LC7001		DRAWN BY Ruru		DATE 2019-03-19				
TOLERANCE .X ±0.25 .XX ±0.1 .XXX ±0.05 ANGLES ±1°				SCALE 2:1		SIZE A4			SHEET 1 OF 1		DWG NO IBD-03PMFS-LC7001		CHECKED BY Rita		DATE 2019-03-19		
				REV. B		WC-REV. A.3			QC: Inspection item		CUSTOMER ALTW		APPROVED BY Max		DATE 2019-03-19		