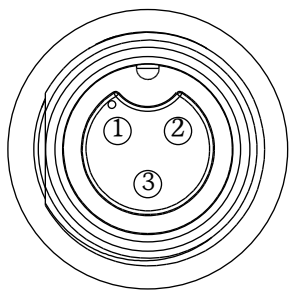
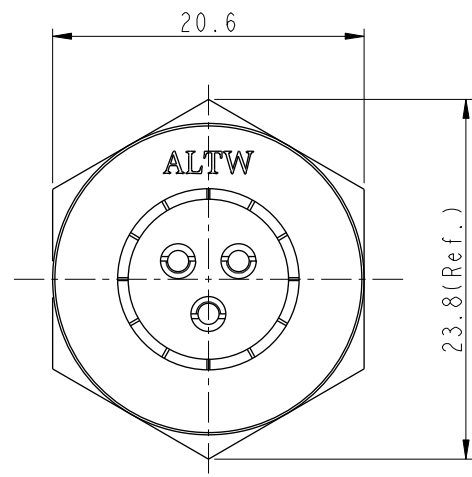
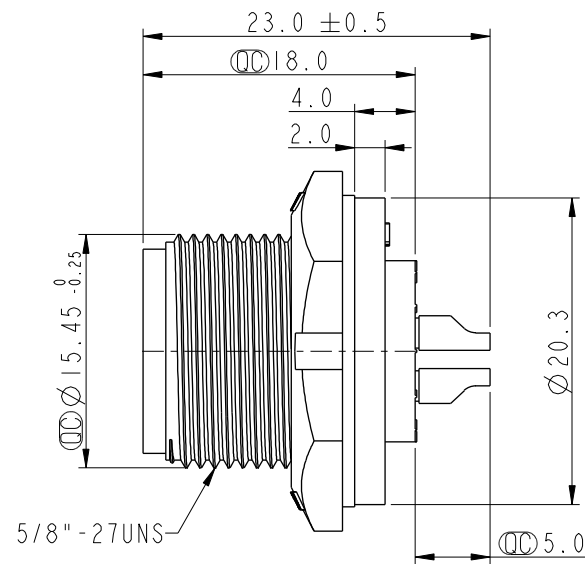
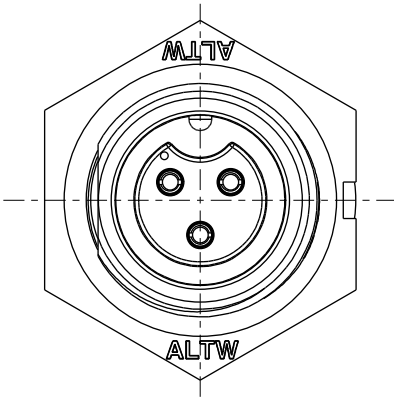
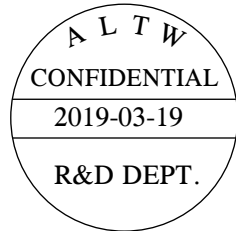
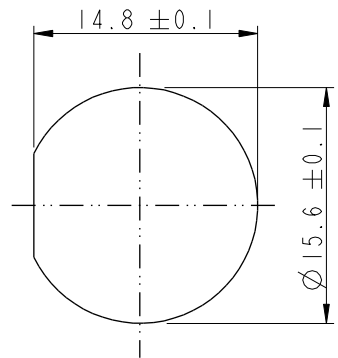


THIS DOCUMENT IS SUBJECT TO CHANGE WITHOUT NOTICE. IT IS CONFIDENTIAL AND A PROPERTY OF Amphenol LTW. DISCLOSURE TO THIRD PARTY HAS TO BE AUTHORIZED BY Amphenol LTW.

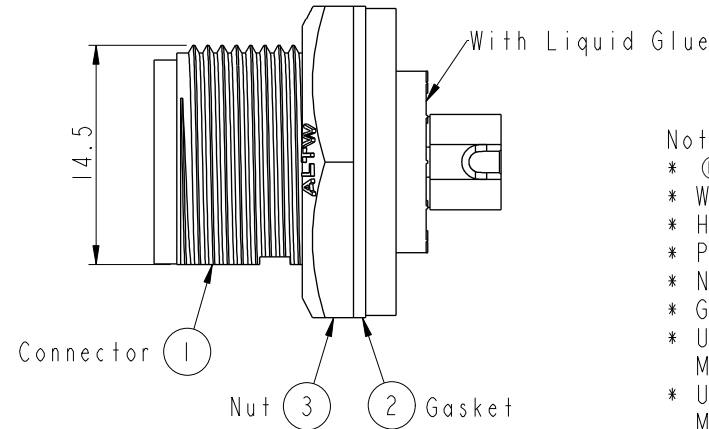
REV.	ECN NO.	DATE	SIGN	DESCRIPTION
A	Initial Release	2014-01-17	Galaxy	New Item.
B	C190315	2019/03/19	Ruru	Modify Note & Add QC Dimension



Pin Assignments
Front View



Recommended Panel
Cut-Out



- Note: Important Dimension
- * Waterproof Rate: IP67, Unmated
 - * Housing: Thermoplastic, Black
 - * Pin: Copper Alloy, Gold Plated
 - * Nut: Thermoplastic, Black
 - * Gasket: Rubber, Gray
 - * Use with waterproof cap or dust cap
Maximum Panel Thickness: 1.3mm
 - * Use without waterproof cap or dust cap
Maximum Panel Thickness: 2.5mm
 - * Gasket and Nut are packed separately
in PE bags

UNIT:mm		TOLERANCE		TITLE		ITEM NO		DRAWN BY		DATE	
.X ±0.25		.XX ±0.1		STANDARD CNC PIN		IBD-03PMFS-SC7001		Ruru		2019-03-19	
.XXX ±0.05		ANGLES ±1°		PANEL SCREW 3PIN M CONN F PIN		DWG NO		CHECKED BY		DATE	
REV. B		WC-REV. A.2		SCALE 2:1		IBD-03PMFS-SC7001		Rita		2019-03-19	
SHEET 1 OF 1		QC: Inspection item		CUSTOMER		ALTW		APPROVED BY		DATE	
								Max		2019-03-19	

Amphenol LTW
安費諾亮泰企業股份有限公司