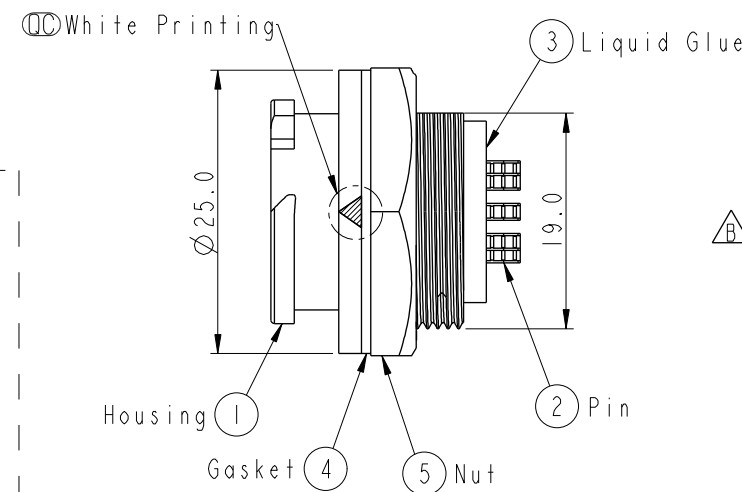
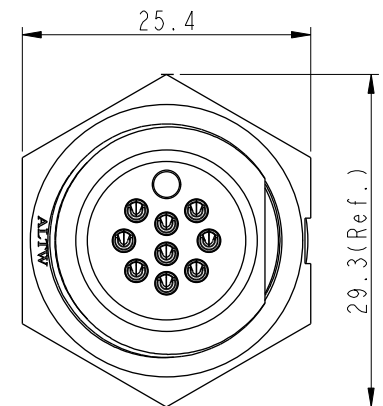
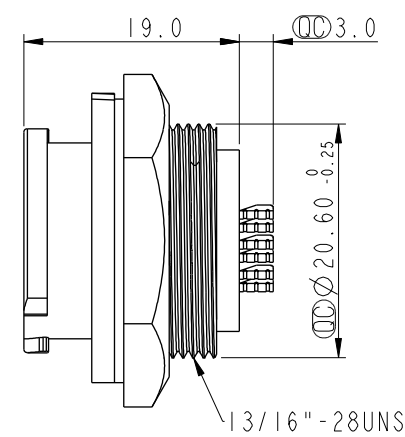
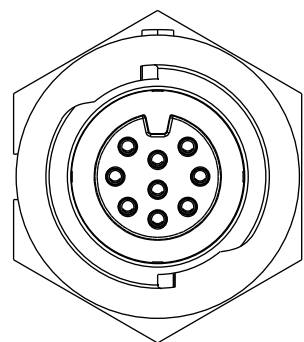


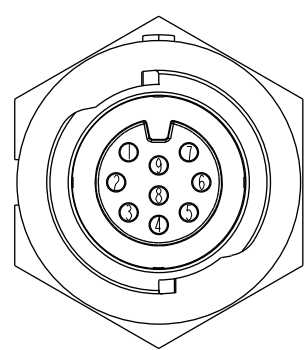
THIS DOCUMENT IS SUBJECT TO CHANGE WITHOUT NOTICE. IT IS CONFIDENTIAL AND A PROPERTY OF Amphenol LTW. DISCLOSURE TO THIRD PARTY HAS TO BE AUTHORIZED BY Amphenol LTW.

REV.	ECN NO.	DATE	SIGN	DESCRIPTION
B	C190470	2019/03/21	Vicky	Change Note

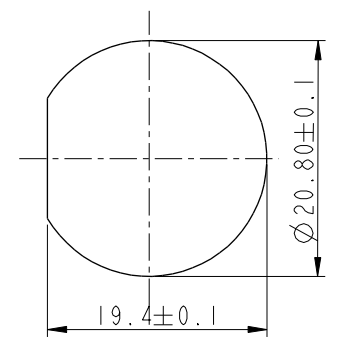
ALTW
CONFIDENTIAL
2019-03-21
R&D DEPT.



- Note:
- * \varnothing Important Dimension To Check.
 - * Waterproof Rate: IP68, Unmated.
In 1 meter water within 24 hours
 - * Housing: Thermoplastic, Black.
 - * Pin: Copper Alloy, Gold Plated.
 - * Nut: Thermoplastic, Black.
 - * Gasket: Rubber, Gray.
 - * Panel Thickness Max: 4.2mm
 - * Gasket and Nut are packed separately in PE bags.



Pin Assignments
Front View



Recommenderd Panel Cut-Out

UNIT:mm				TITLE X-Lok C Size Receptacle Rear 9 Pin M Conn. F Pin			Amphenol LTW 安費諾亮泰企業股份有限公司			ITEM NO CD-09RMFS-QC8001		DRAWN BY Vicky		DATE 2019-03-21	
TOLERANCE .X ±0.25 .XX ±0.1 .XXX ±0.05 ANGLES ±1°		SCALE 3:2								SIZE A4		SHEET 1 OF 1		DWG NO CD-09RMFS-QC8001	
				REV. B		WC-REV. A.2		QC: Inspection item		CUSTOMER ALTW		APPROVED BY Max		DATE 2019-03-21	