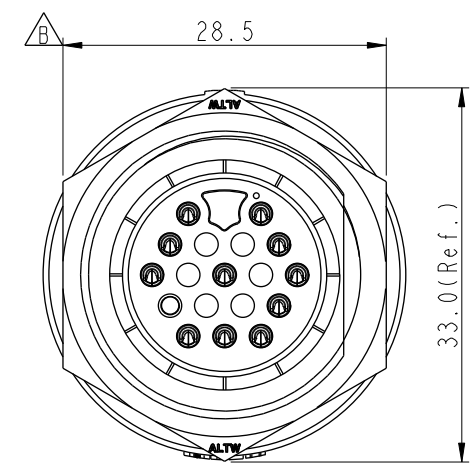
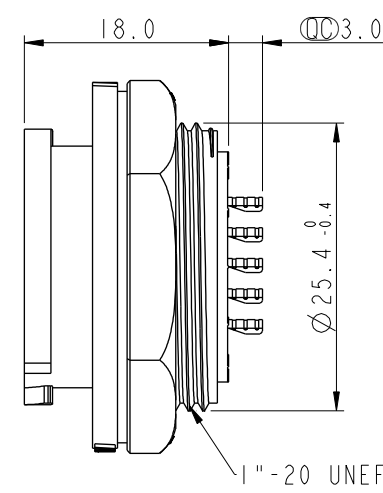
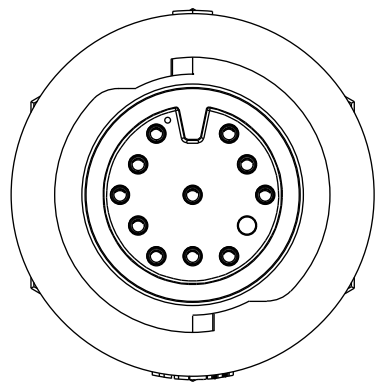


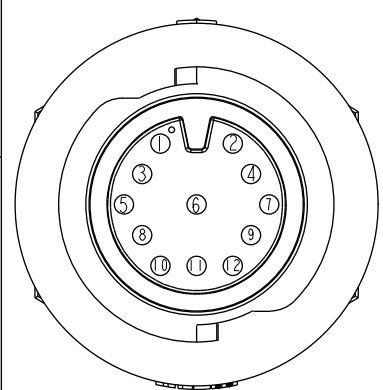
THIS DOCUMENT IS SUBJECT TO CHANGE WITHOUT NOTICE. IT IS CONFIDENTIAL AND A PROPERTY OF Amphenol LTW. DISCLOSURE TO THIRD PARTY HAS TO BE AUTHORIZED BY Amphenol LTW.

REV.	ECN NO.	DATE	SIGN	DESCRIPTION
B	LEN1660006	2016/05/27	Vicky	Update Nut Dime
C	CI90403	2019/03/12	Vicky	Change Note

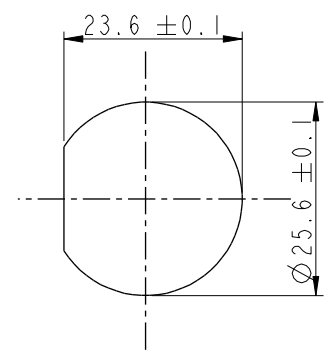
ALTW
CONFIDENTIAL
2019-03-12
R&D DEPT.



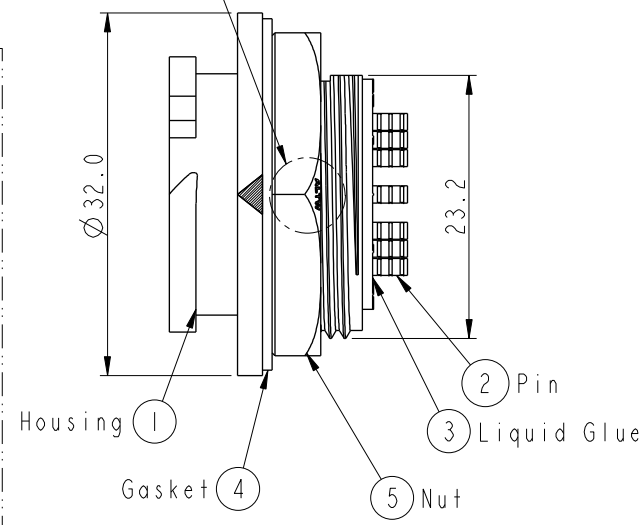
QC White Printing



Pin Assignments
Front View



Recommended Panel
Cut-Out



- △ Note:
- * QC Important Dimension To Check
 - * Waterproof Rate: IP68, Unmated.
In 1 meter water within 24 hours
 - * Housing: Thermoplastic, Black.
 - * Pin: Copper Alloy, Gold Plated.
 - * Nut: Thermoplastic, Black.
 - * Gasket: Rubber, Gray.
 - * Panel Thickness Max: 3.6mm
 - * Gasket and Nut are packed separately in PE bags.

UNIT:mm				TITLE X-Lok D Size Receptacle Rear 12P M Conn F Pin		ITEM NO DD-12RMFS-QC8001		DRAWN BY Vicky		DATE 2019-03-12	
TOLERANCE .X ±0.25 .XX ±0.1 .XXX ±0.05 ANGLES ±1°		SCALE 3:2		SIZE A4		DWG NO DD-12RMFS-QC8001		CHECKED BY Rita		DATE 2019-03-12	
		REV. C		WC-REV. A.3		CUSTOMER ALTW		APPROVED BY Max		DATE 2019-03-12	
				QC: Inspection item							
1		2		3		4		5		6	
										7	
										8	
										W10814-03-0001A2	