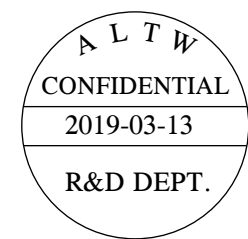
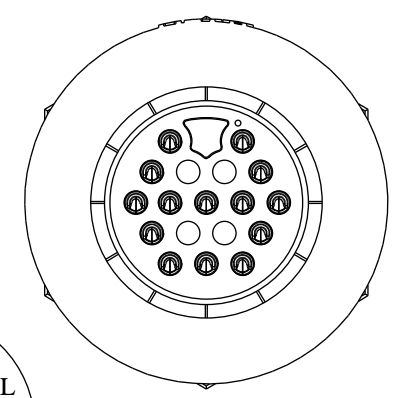
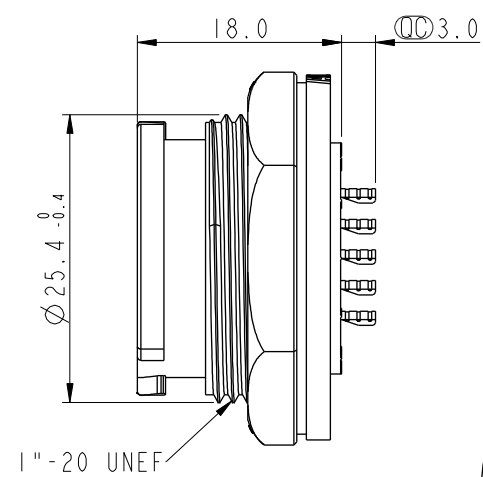
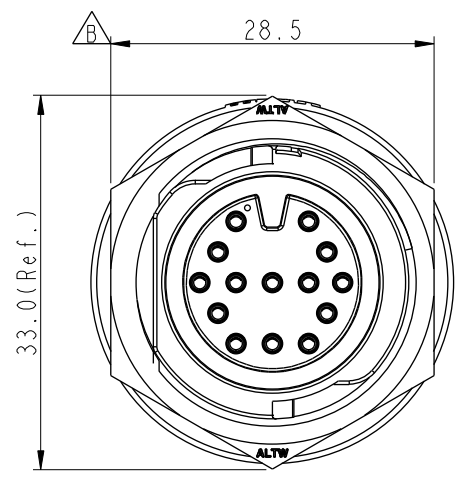
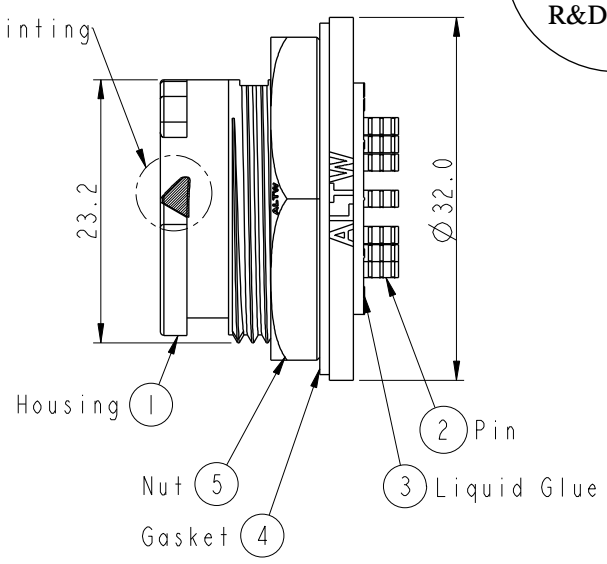


THIS DOCUMENT IS SUBJECT TO CHANGE WITHOUT NOTICE. IT IS CONFIDENTIAL AND A PROPERTY OF Amphenol LTW. DISCLOSURE TO THIRD PARTY HAS TO BE AUTHORIZED BY Amphenol LTW.

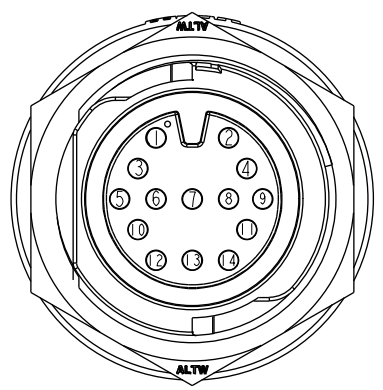
REV.	ECN NO.	DATE	SIGN	DESCRIPTION
B	LEN1660007	2016/05/27	Vicky	Update Nut Dime
C	CI90403	2019/03/13	Vicky	Change Note



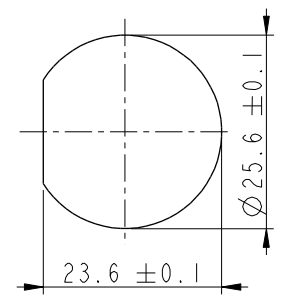
White Printing




- Note:
- * Important Dimension To Check.
 - * Waterproof Rate: IP68, Unmated. In 1 meter water within 24 hours
 - * Housing: Thermoplastic, Black.
 - * Pin: Copper Alloy, Gold Plated.
 - * Nut: Thermoplastic, Black.
 - * Gasket: Rubber, Gray.
 - * Use Without Waterproof Cap Panel Thickness Max: 3.6mm
 - * Use With Waterproof Cap Panel Thickness Max: 2.6mm
 - * Gasket and Nut are packed separately in PE bags.



Pin Assignments Front View



Recommended Panel Cut-Out

UNIT:mm				TITLE			Amphenol LTW 安費諾亮泰企業股份有限公司			ITEM NO		DRAWN BY		DATE		
TOLERANCE .X ±0.25 .XX ±0.1 .XXX ±0.05 ANGLES ±1°				X-Lok D Size Receptacle Front 14P M Conn F Pin						DD-14PMFS-QC8001		Vicky		2019-03-13		
				SCALE 3:2		SIZE A4				SHEET 1 OF 1	DWG NO DD-14PMFS-QC8001		CHECKED BY Rita		DATE 2019-03-13	
				REV. C		WC-REV. A.3				QC: Inspection item	CUSTOMER ALTW		APPROVED BY Max		DATE 2019-03-13	
1		2		3		4		5		6		7		8		
WI0814-03-0001A																