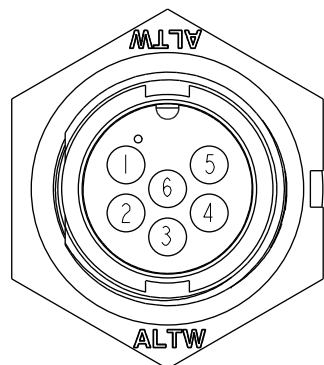
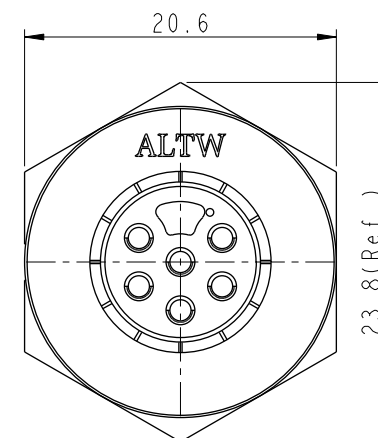
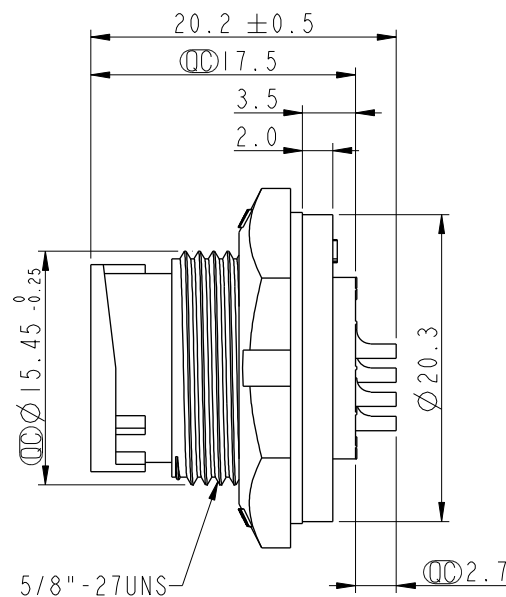
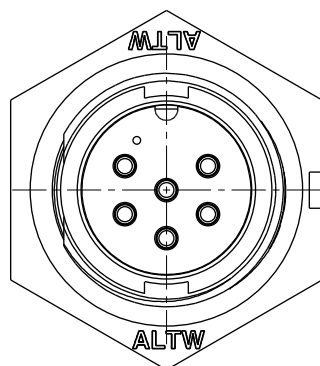
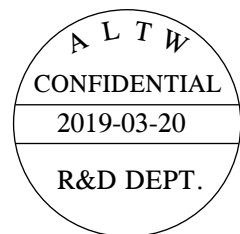
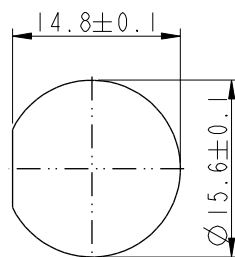


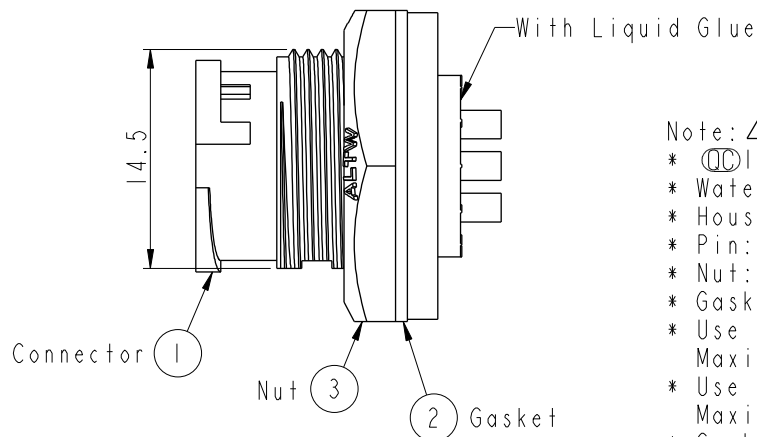
| REV. | ECN NO.         | DATE       | SIGN | DESCRIPTION                    |
|------|-----------------|------------|------|--------------------------------|
| A    | Initial Release | 2013/11/11 | Ann  | New Item                       |
| B    | C190308         | 2019/03/20 | Ruru | Modify Note & Add QC Dimension |
|      |                 |            |      |                                |



Pin Assignments  
Front View



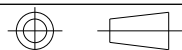
Recommended Panel  
Cut-Out



Note: **B**

- \* **CC** Important Dimension
- \* Waterproof Rate: IP67, Unmated
- \* Housing: Thermoplastic, Black
- \* Pin: Copper Alloy, Gold Plated
- \* Nut: Thermoplastic, Black
- \* Gasket: Rubber, Gray
- \* Use with waterproof cap or dust cap  
Maximum Panel Thickness: 2.8mm
- \* Use without waterproof cap or dust cap  
Maximum Panel Thickness: 4.0mm
- \* Gasket and Nut are packed separately  
in PE bags

UNIT:mm



TOLERANCE  
.X ±0.25  
.XX ±0.1  
.XXX ±0.05  
ANGLES ±1°

TITLE  
Standard CNC Pin  
Panel Lock 6Pin M Conn M Pin

SCALE  
2:1

SIZE  
A4

SHEET  
1 OF 1

REV.  
B

WC-REV.  
A.3

**CC**: Inspection item

**Amphenol LTW**  
安費諾亮泰企業股份有限公司

ITEM NO  
IBD-06PMMS-LC7001

DWG NO  
IBD-06PMMS-LC7001

CUSTOMER  
ALTW

DRAWN BY  
Ruru

CHECKED BY  
Rita

APPROVED BY  
Max

DATE  
2019-03-20

DATE  
2019-03-20

DATE  
2019-03-20