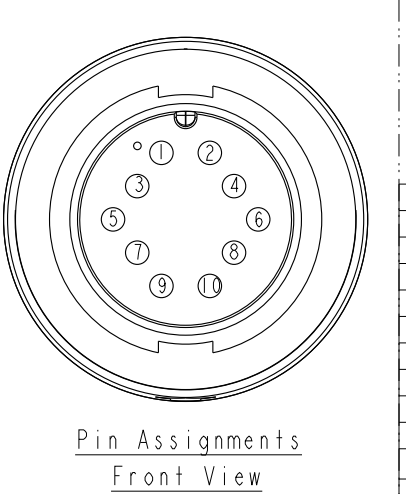
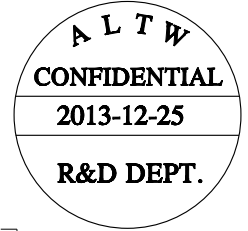
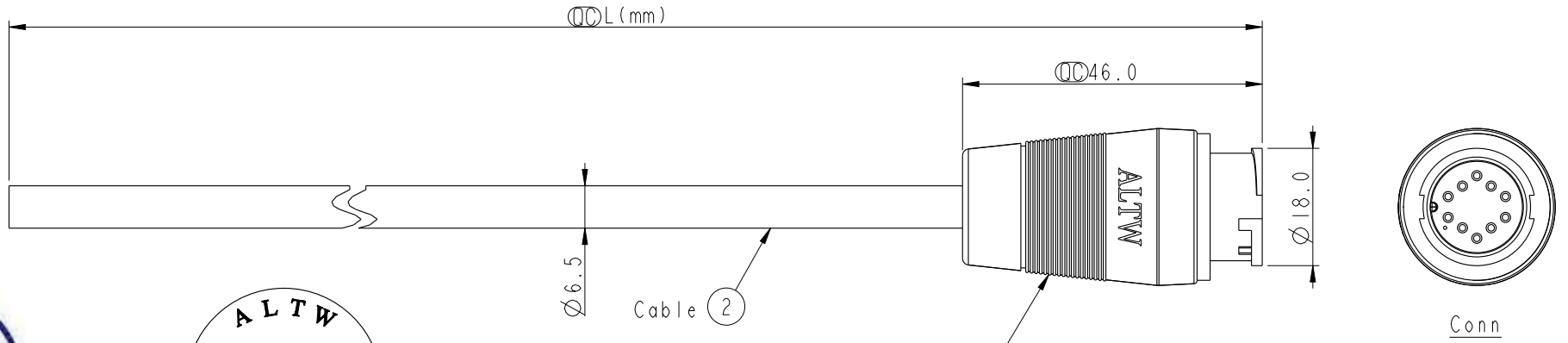


REV.	ECN NO.	DATE	SIGN	DESCRIPTION



10	Orange	橙
9	Black	黑
8	Red	紅
7	Pink	粉紅
6	Grey	灰
5	Yellow	黃
4	Green	綠
3	White	白
2	Blue	藍
1	Brown	棕
Conn. 1	Wire Color	

ICD-10BMMM-LL6000 1
Color: Black

ICD-10BMMM-LL6AXX
 XX : 01~99Meters
 01 : 01Meter
 02 : 02Meters
 :
 :
 :
 99 : 99Meters
 Cable Length:(L):01~99Meters

Note:
 * \varnothing Important Dimension To Check.
 * Waterproof Rate: IP66
 * Housing: Nylon+GF+Black
 * Male Pin: Copper Alloy, Gold Plated
 * Cable: UL2464 24AWG*10C+D+AL/My, PVC Jacket UV Resistant, OD=6.5, Black
 * Cable Length Tolerance: 01M:40mm
 02M~05M:±60mm
 06M~10M:±100mm
 11M~30M:±200mm
 31M~99M:±500mm

UNIT:mm
 TOLERANCE ±0.5

TITLE MIDDLE CNC PIN CABLE LOCK 10P M CONN M PIN			
SCALE 1:1	SIZE A4	SHEET 1 OF 1	
REV. A	WC-REV. A.2	QC: Inspection item	

Amphenol LTW
 安費諾亮泰企業股份有限公司

ITEM NO	DRAWN BY Laurence_zang	DATE 2013-12-25
DWG NO ICD-10BMMM-LL6AXX	CHECKED BY Lin Ren Song	DATE 2013-12-25
CUSTOMER ALTW	APPROVED BY Victor	DATE 2013-12-25

THIS DOCUMENT IS SUBJECT TO CHANGE WITHOUT NOTICE. IT IS CONFIDENTIAL AND A PROPERTY OF AMPHENOL LTW. DISCLOSURE TO THIRD PARTY HAS TO BE AUTHORIZED BY AMPHENOL LTW.