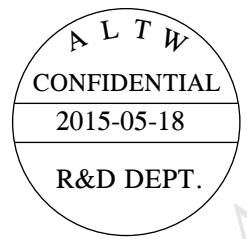
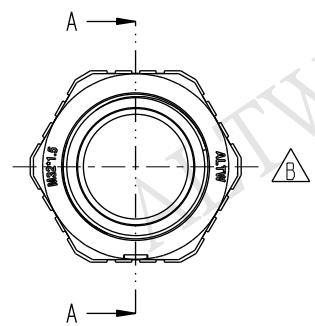
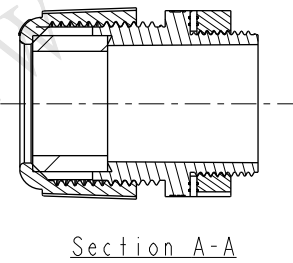
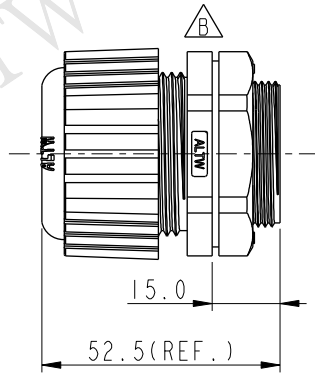
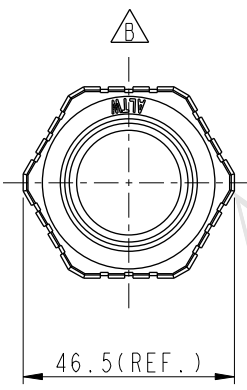
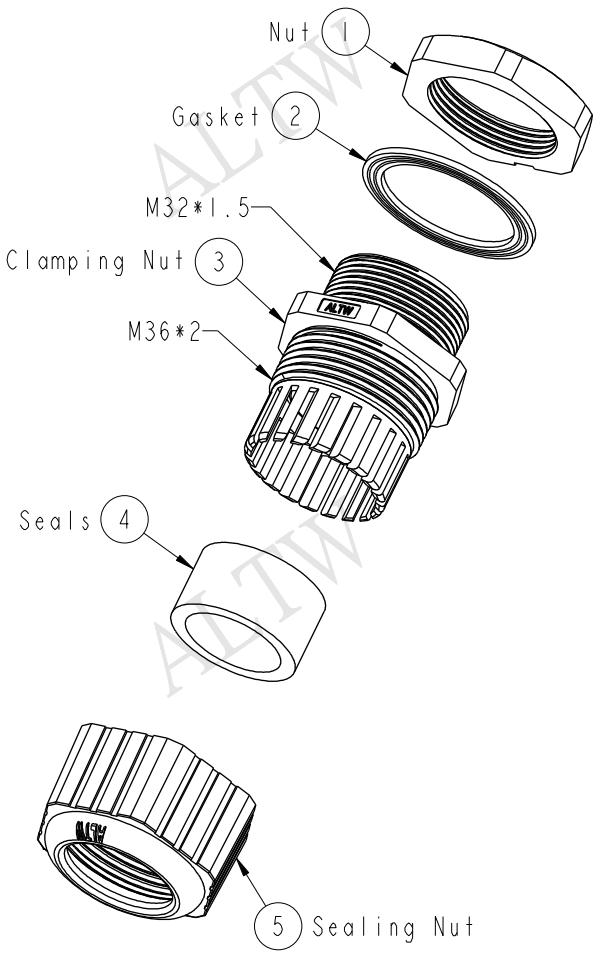


REV.	ECN NO.	DATE	SIGN	DESCRIPTION
B	LEN1560119	2015/05/18	Ruru	Change Logo



- Note:
- * Waterproof Rate: IP68
 - * Screw Nut: Nylon, Black
 - * Clamp Ring: Nylon, Black
 - * Sealing Nut: Nylon, Black
 - * Gasket: EPDM, Black
 - * Seals: EPDM, Black
 - * Cable Range: $\varnothing 16 \sim \varnothing 22\text{mm}$
 - * For Panel Thickness: 6.0mm max
 - * Spanner Size:
 - Body: 41.0mm
 - Sealing Nut: 42.2mm
 - Screw Nut: 41.0mm

A	UNIT: mm	TITLE Cable Gland Assembly(M32*1.5 - Long Type)		Amphenol LTW 安費諾亮泰企業股份有限公司		ITEM NO CSG-32M001	DRAWN BY Ruru	DATE 2015-05-18
	TOLERANCE .X ±0.25 .XX ±0.1 .XXX ±0.05 ANGLES ±1°	SCALE 3:5	SIZE A4	SHEET 1	OF 1	DWG NO CSG-32M001	CHECKED BY Rita	DATE 2015-05-18
	REV. B	WC-REV. A.1	QC: Inspection item		CUSTOMER ALTW	APPROVED BY Lion	DATE 2015-05-18	

THIS DOCUMENT IS SUBJECT TO CHANGE WITHOUT NOTICE. IT IS CONFIDENTIAL AND A PROPERTY OF Amphenol LTW. DISCLOSURE TO THIRD PARTY HAS TO BE AUTHORIZED BY Amphenol LTW.