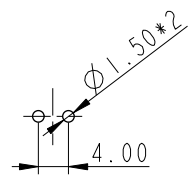
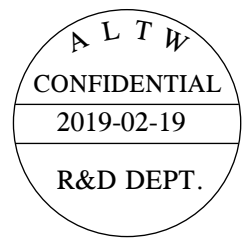


REV.	ECN NO.	DATE	SIGN	DESCRIPTION
B	LEN-8A0421	2008/09/10	Shin	Add Note
C	LEN1730267	2017/03/14	Ruru	Change Logo & Modify Note
D	CI90274	2019/02/19	Ruru	Modify Note



2Pin Male Connector  
Female Pin PCB Layout  
2 Pin 公接頭  
PCB 板挖孔位置尺寸圖



Note:

- \* Important Dimension To Check.
- \* Waterproof Rate: IP67, Unmated
- \* Housing: Thermoplastic, Black
- \* Pin: Copper Alloy, Gold Plated
- \* Nut: Thermoplastic, Black
- \* Gasket: Rubber, Black
- \* Use with waterproof cap or dust cap  
Panel Thickness Max: 3.0mm
- \* Use without waterproof cap or dust cap  
Panel Thickness Max: 4.0mm
- \* Gasket and Nut are packed separately in PE bags.

UNIT:mm		TITLE		ITEM NO		DRAWN BY		DATE	
		Standard,Panel Screw 2Pin M Conn F Pin		BB-02PMFP-SC7001		Ruru		2019-02-19	
TOLERANCE		SCALE		DWG NO		CHECKED BY		DATE	
.X ±0.25		1:1		BB-02PMFP-SC7001		Rita		2019-02-19	
.XX ±0.1		SIZE		CUSTOMER		APPROVED BY		DATE	
.XXX ±0.05		A4		ALTW		Max		2019-02-19	
ANGLES ±1°		REV.							
		D							
		WC-REV.							
		A.5							
		Inspection item							

Amphenol LTW  
安費諾亮泰企業股份有限公司

THIS DOCUMENT IS SUBJECT TO CHANGE WITHOUT NOTICE. IT IS CONFIDENTIAL AND A PROPERTY OF Amphenol LTW. DISCLOSURE TO THIRD PARTY HAS TO BE AUTHORIZED BY Amphenol LTW.