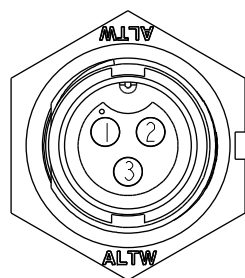
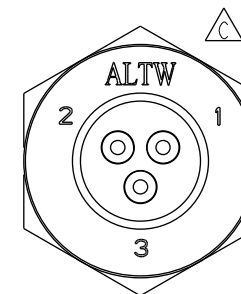
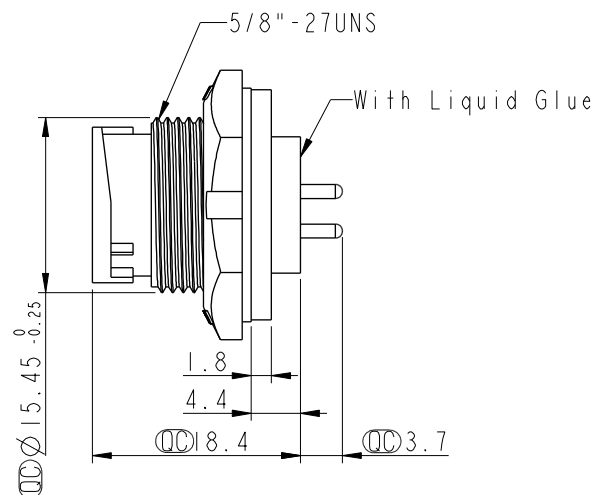
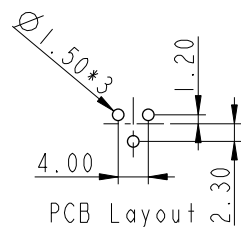
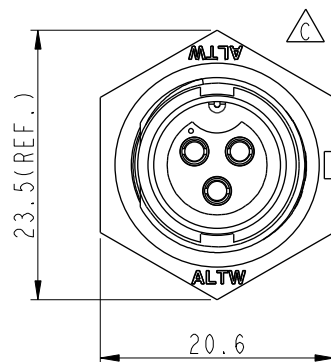
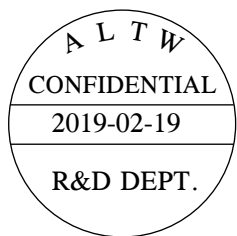
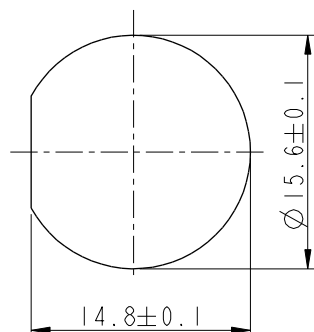


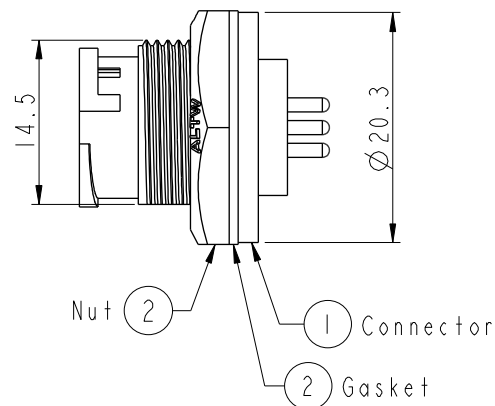
REV.	ECN NO.	DATE	SIGN	DESCRIPTION
B	LEN-8B0301	2008/09/17	Shin	Add Note and Update Drawing to New Format
C	LEN1730275	2017/03/17	Ruru	Change Logo
D	CI90274	2019/02/19	Ruru	Modify Note



Pin Assignments
Front View



Recommended Panel Cut-Out



Note:

- * Important Dimensions To Check.
- * Waterproof Rate: IP67, Unmated
- * Housing: Thermoplastic, Black
- * Pin: Copper Alloy, Gold Plated
- * Nut: Thermoplastic, Black
- * Gasket: Rubber, Black

- * Use with Waterproof Cap or Dustcap
Panel Thickness Max: 3.0mm
- * Use without Waterproof Cap or Dustcap
Panel Thickness Max: 4.5mm
- * Gasket and Nut are packed separately
in PE bags.

UNIT:mm		TITLE
TOLERANCE		Standard, Panel Lock 3Pin M Conn F Pin
.X ±0.25		SCALE 1:1
.XX ±0.1		SIZE A4
.XXX ±0.05		SHEET 1 OF 1
ANGLES ±1°		REV. D
		WC-REV. A.3
		Inspection item

Amphenol LTW
安費諾亮泰企業股份有限公司

ITEM NO	BB-03PMFP-LC7001	DRAWN BY	Ruru	DATE	2019-02-19
DWG NO	BB-03PMFP-LC7001	CHECKED BY	Rita	DATE	2019-02-19
CUSTOMER	ALTW	APPROVED BY	Max	DATE	2019-02-19