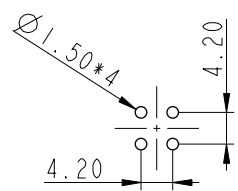
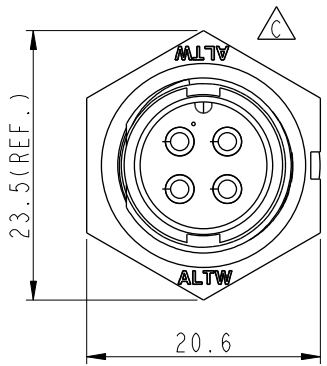
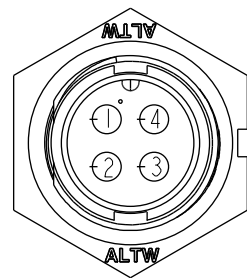


THIS DOCUMENT IS SUBJECT TO CHANGE WITHOUT NOTICE. IT IS CONFIDENTIAL AND A PROPERTY OF Amphenol LTW. DISCLOSURE TO THIRD PARTY HAS TO BE AUTHORIZED BY Amphenol LTW.

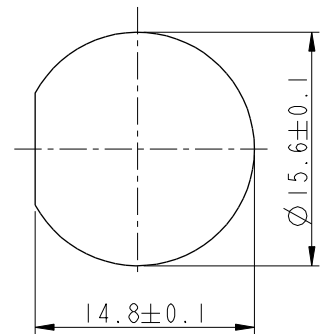
REV.	ECN NO.	DATE	SIGN	DESCRIPTION
B	LEN-8B0357	2008/09/17	Shin	Add Note and Update Drawing to New Format
C	LEN1730273	2017/03/17	Ruru	Change Logo
D	CI90274	2019/02/20	Ruru	Modify Note



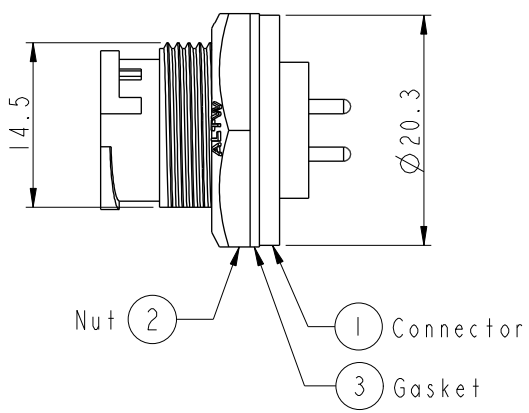
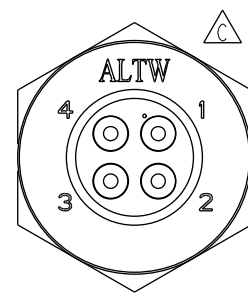
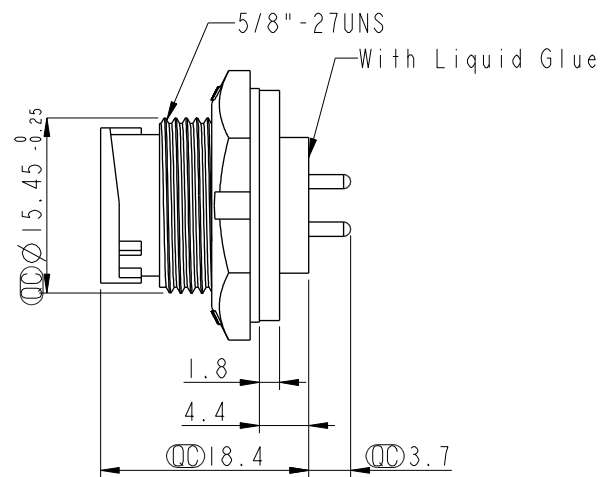
PCB Layout



Pin Assignments
Front View



Recommended Panel Cut-Out



- Note:
- * Important Dimensions To Check.
 - * Waterproof Rate: IP67, Unmated
 - * Housing: Thermoplastic, Black
 - * Pin: Copper Alloy, Gold Plated
 - * Nut: Thermoplastic, Black
 - * Gasket: Rubber, Black
 - * Use with Waterproof Cap or Dustcap
Panel Thickness Max: 3.0mm
 - * Use without Waterproof Cap or Dustcap
Panel Thickness Max: 4.5mm
 - * Gasket and Nut are packed separately in PE bags.

UNIT:mm		TITLE Standard, Panel Lock 4Pin M Conn M Pin			
TOLERANCE		SCALE	SIZE	SHEET	OF
.X ±0.25		1:1	A4	1	1
.XX ±0.1		REV.	WC-REV.	QC: Inspection item	
.XXX ±0.05		D	A.3		
ANGLES ±1°					

Amphenol LTW
安費諾亮泰企業股份有限公司

ITEM NO	BB-04PMMP-LC7001	DRAWN BY	Ruru	DATE	2019-02-20
DWG NO	BB-04PMMP-LC7001	CHECKED BY	Rita	DATE	2019-02-20
CUSTOMER	ALTW	APPROVED BY	Max	DATE	2019-02-20