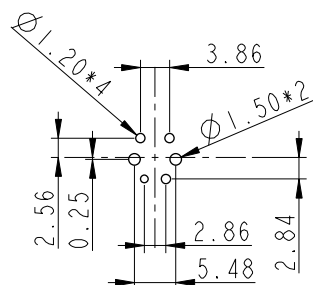
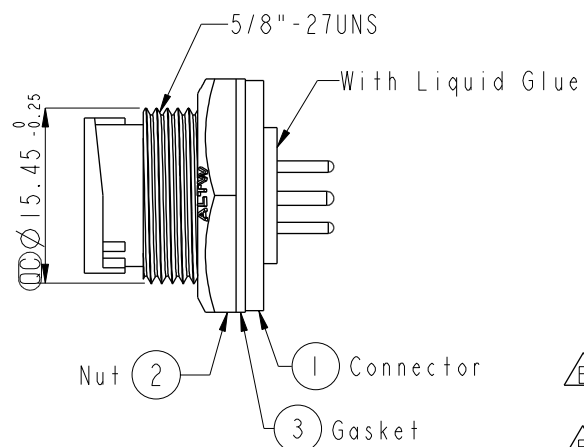
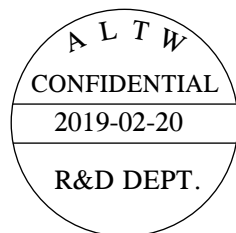
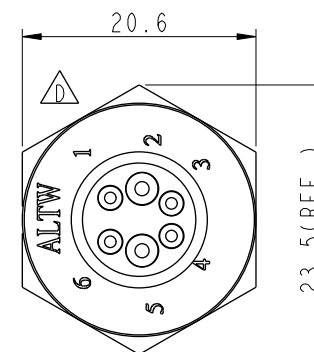
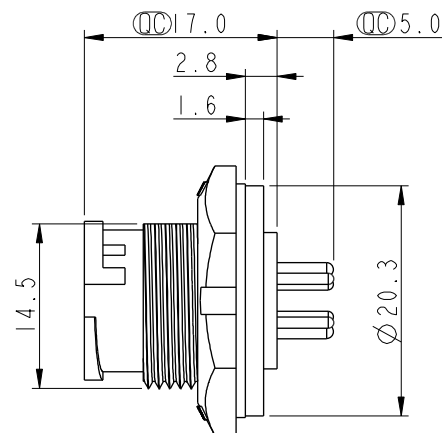
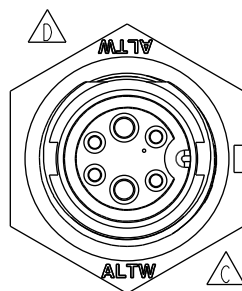


REV.	ECN NO.	DATE	SIGN	DESCRIPTION
C	LE3-8C0056	2008/11/07	Ivan	Change to pin hole
D	LEN1730291	2017/03/20	Ruru	Change Logo
E	CI90274	2019/02/20	Ruru	Modify Note



PCB Lay-Out



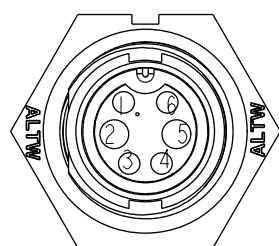
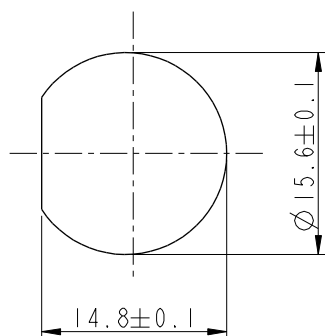
Note:

- * Important Dimensions To Check.
- * Waterproof Rate: IP67, Unmated
- * Housing: Thermoplastic, Black
- * Pin: Copper Alloy, Gold Plated
- * Nut: Thermoplastic, Black
- * Gasket: Rubber, Black

* Use with Waterproof Cap or Dustcap
Panel Thickness Max: 3.0mm

* Use without Waterproof Cap or Dustcap
Panel Thickness Max: 4.5mm

* Gasket and Nut are packed separately
in PE bags.

Pin Assignments
Front View

Recommended Panel Cut-Out

UNIT:mm		TITILE		ITEM NO		DRAWN BY		DATE	
		Standard		BBD-06PMFP-LC7001		Ruru		2019-02-20	
		Panel Lock 6Pin M Conn. F Pin		DWG NO		CHECKED BY		DATE	
				BBD-06PMFP-LC7001		Rita		2019-02-20	
				CUSTOMER		APPROVED BY		DATE	
				ALTW		Max		2019-02-20	

TOLERANCE
.X ±0.25
.XX ±0.1
.XXX ±0.05
ANGLES ±1°

SCALE
1:1

SIZE
A4

SHEET
1 OF 1

REV.
E

WC-REV.
A.2

Inspection item

Amphenol LTW
安費諾亮泰企業股份有限公司