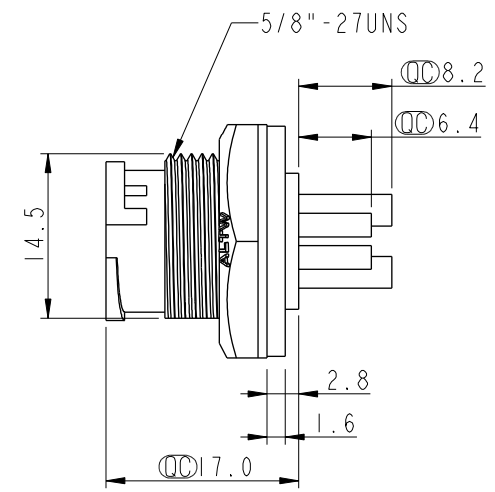
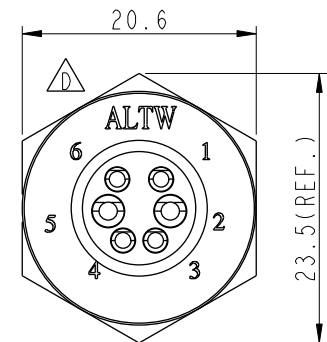
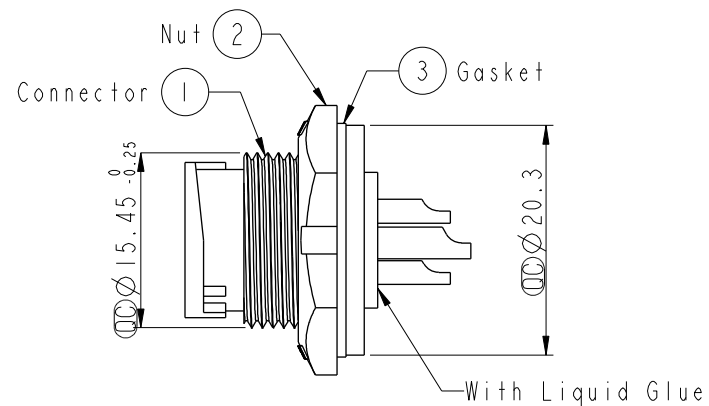
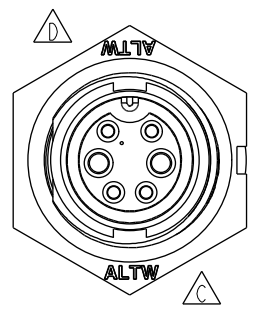


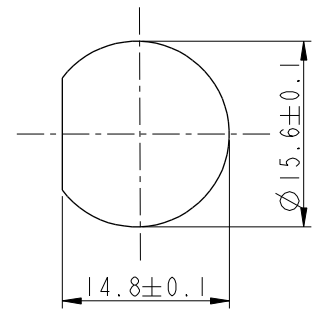
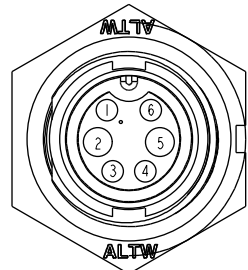
THIS DOCUMENT IS SUBJECT TO CHANGE WITHOUT NOTICE. IT IS CONFIDENTIAL AND A PROPERTY OF Amphenol LTW. DISCLOSURE TO THIRD PARTY HAS TO BE AUTHORIZED BY Amphenol LTW.

REV.	ECN NO.	DATE	SIGN	DESCRIPTION
C	LE3-8C0058	2008/11/07	Ivan	Change to pin hole
D	LEN1730290	2017/03/20	Ruru	Change Logo
E	CI90274	2019/02/20	Ruru	Modify Note

ALTW  
CONFIDENTIAL  
2019-02-20  
R&D DEPT.



- Note:
- \* Important Dimensions To Check.
  - \* Waterproof Rate: IP67, Unmated
  - \* Housing: Thermoplastic, Black
  - \* Pin: Copper Alloy, Gold Plated
  - \* Nut: Thermoplastic, Black
  - \* Gasket: Rubber, Black
  - \* Use with Waterproof Cap or Dust cap
  - Panel Thickness Max: 3.0mm
  - \* Use without Waterproof Cap or Dust cap
  - Panel Thickness Max: 4.5mm
  - \* Gasket and Nut are packed separately in PE bags.



Pin Assignments  
Front View

Recommended Panel Cut-Out

UNIT:mm		TOLERANCE		TITLE		ITEM NO		DRAWN BY		DATE	
.X ±0.25		.XX ±0.1		Standard		BBD-06PMFS-LC7001		Ruru		2019-02-20	
.XXX ±0.05		ANGLES ±1°		Panel Lock 6Pin M Conn F Pin		DWG NO		CHECKED BY		DATE	
				SCALE 1:1		BBD-06PMFS-LC7001		Rita		2019-02-20	
				REV. E		CUSTOMER		APPROVED BY		DATE	
				WC-REV. A.3		ALTW		Max		2019-02-20	
				QC: Inspection item							

Amphenol LTW  
安費諾亮泰企業股份有限公司