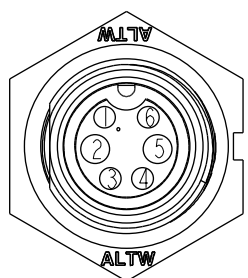
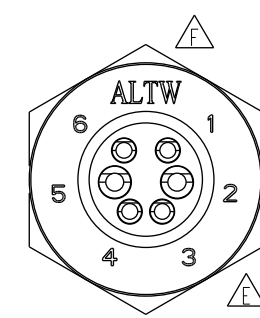
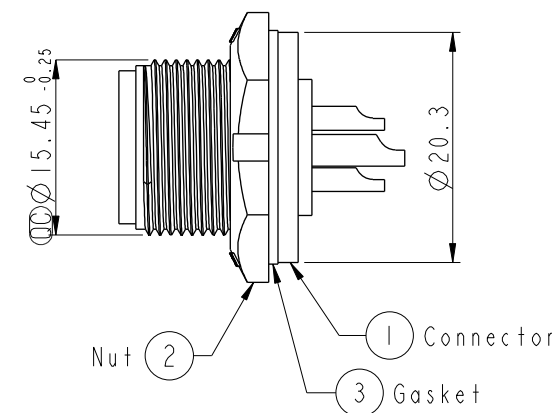
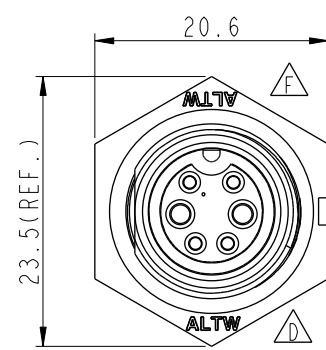
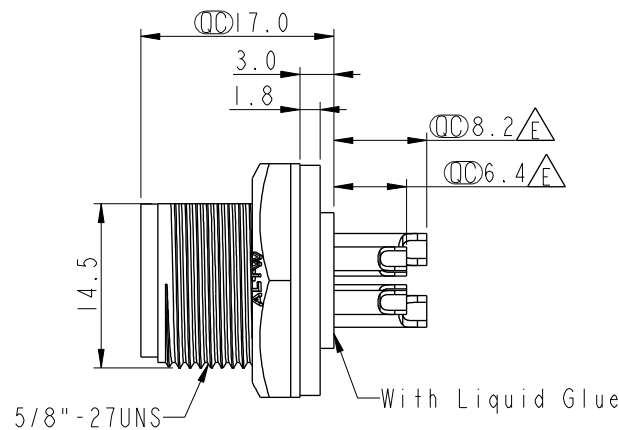
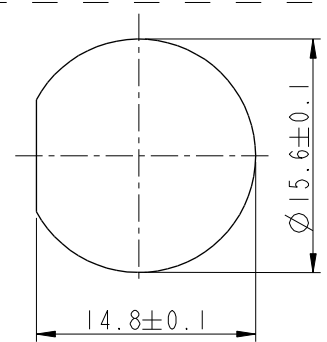


THIS DOCUMENT IS SUBJECT TO CHANGE WITHOUT NOTICE. IT IS CONFIDENTIAL AND A PROPERTY OF Amphenol LTW. DISCLOSURE TO THIRD PARTY HAS TO BE AUTHORIZED BY Amphenol LTW.

REV.	ECN NO.	DATE	SIGN	DESCRIPTION
E	LEN-910253	2009/01/15	TOMMY	CHANGE PIN DIMENSION
F	LEN1730293	2017/03/20	Ruru	Change Logo
G	CI90274	2019/02/20	Ruru	Modify Note



Pin Assignments
Front View



Recommended Panel Cut-Out

- Note:
- * Important Dimensions To Check.
 - * Waterproof Rate: IP67, Unmated
 - * Housing: Thermoplastic, Black
 - * Pin: Copper Alloy, Gold Plated
 - * Nut: Thermoplastic, Black
 - * Gasket: Rubber, Black

- * Use with Waterproof Cap or Dustcap
Panel Thickness Max: 3.0mm
- * Use without Waterproof Cap or Dustcap
Panel Thickness Max: 4.0mm
- * Gasket and Nut are packed separately
in PE bags.

UNIT:mm		TITLE Standard Panel Screw 6Pin M Conn F Pin			ITEM NO BBD-06PMFS-SC7001		DRAWN BY Ruru		DATE 2019-02-20	
TOLERANCE .X ±0.25 .XX ±0.1 .XXX ±0.05 ANGLES ±1°		SCALE 1:1	SIZE A4	SHEET 1 OF 1	DWG NO BBD-06PMFS-SC7001		CHECKED BY Rita		DATE 2019-02-20	
REV. G		WC-REV. A.3	Inspection item		CUSTOMER ALTW		APPROVED BY Max		DATE 2019-02-20	

Amphenol LTW
安費諾亮泰企業股份有限公司