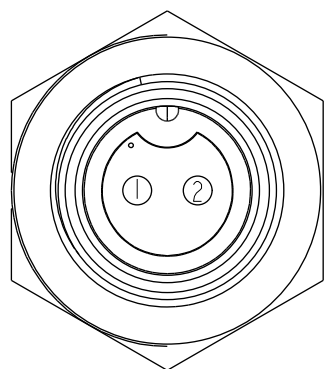
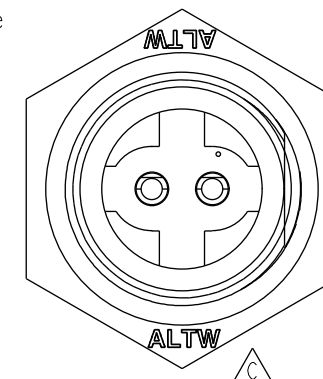
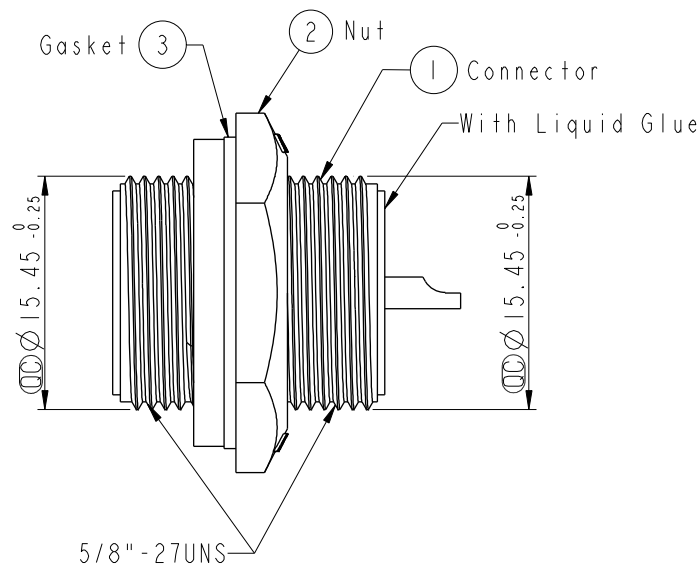
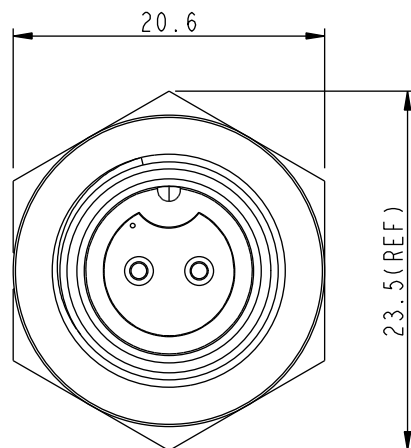


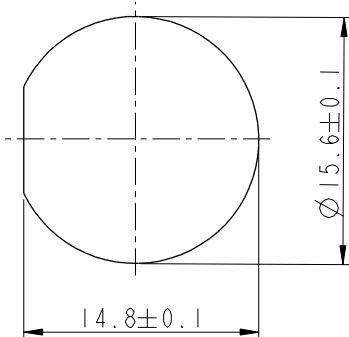
ALTW
CONFIDENTIAL
2019-02-22
R&D DEPT.

REV.	ECN NO.	DATE	SIGN	DESCRIPTION
B	LEN-8B0569	2008/09/10	Shin	Add Note
C	C190274	2019/02/22	Ruru	Modify Note & Change Logo

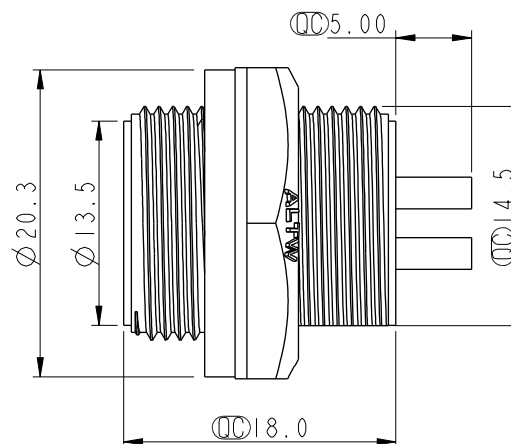


Pin Assignments



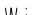
Front View



Recommended Panel Cut-out



Note: $\triangle C$

- *  Important Dimension To Check.
- * Waterproof Rate: IP67, Unmated
- * Housing: Thermoplastic, Black
- * Pin: Copper Alloy, Gold Plated
- * Nut: Thermoplastic, Black
- * Gasket: Rubber, Black
- *  Use With Waterproof Cap Or Dust Cap
Panel Thickness Max: 4.0mm
- *  Use Without Waterproof Cap Or Dust Cap
Panel Thickness Max: 5.0mm
- * Gasket and Nut are packed separately
in PE bags.

UNIT:mm				TITLE Standard, Rear Screw 2P M Conn F Pin			Amphenol LTW 安費諾亮泰企業股份有限公司		ITEM NO BD-02RMFS-SC7001		DRAWN BY Ruru		DATE 2019-02-22				
TOLERANCE .X ±0.25 .XX ±0.1 .XXX ±0.05 ANGLES ±1°				SCALE 2:1		SIZE A4			SHEET 1 OF 1		DWG NO BD-02RMFS-SC7001		CHECKED BY Rita		DATE 2019-02-22		
				REV. C		WC-REV. A.3			QC: Inspection item		CUSTOMER ALTW		APPROVED BY Max		DATE 2019-02-22		