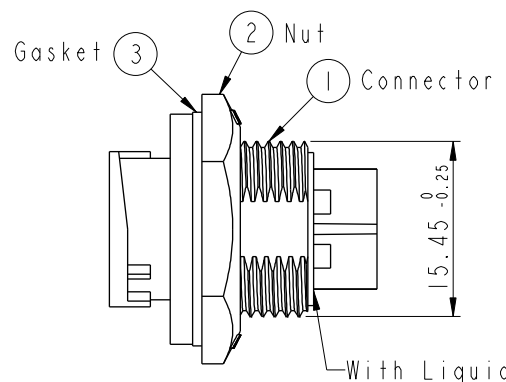
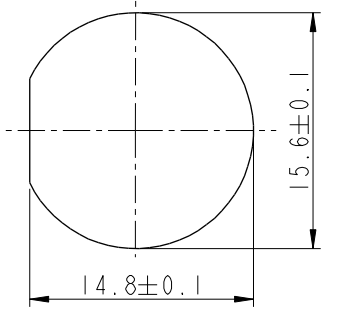
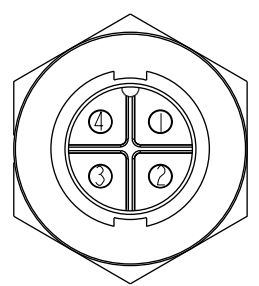
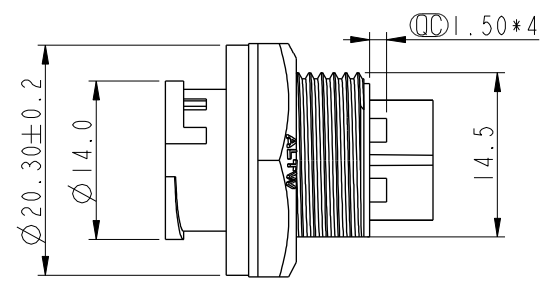
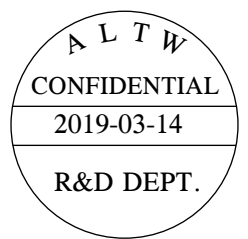
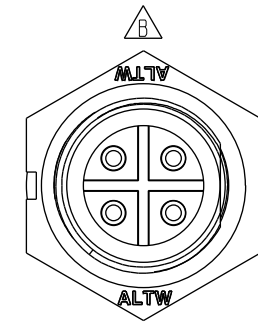
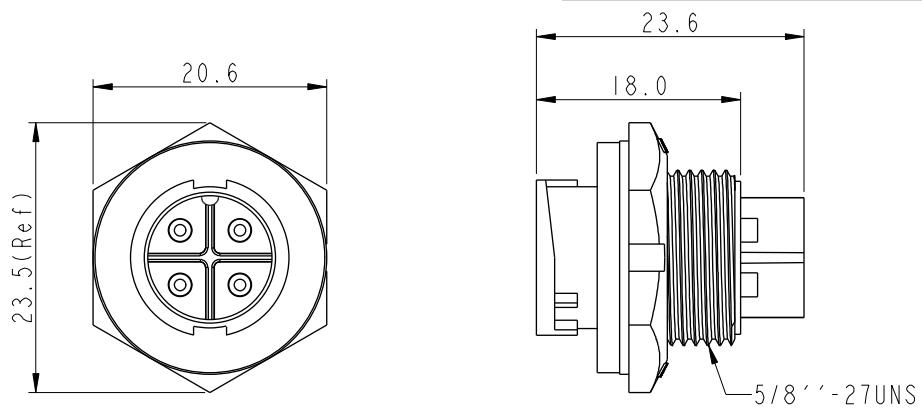


THIS DOCUMENT IS SUBJECT TO CHANGE WITHOUT NOTICE. IT IS CONFIDENTIAL AND A PROPERTY OF AMPHENOL LTW. DISCLOSURE TO THIRD PARTY HAS TO BE AUTHORIZED BY AMPHENOL LTW.

REV.	ECN NO.	DATE	SIGN	DESCRIPTION
A	Release	2013-06-28	Kevin Wang	
B	CI90315	2019/03/14	Ruru	Modify Note & Change Logo



- Note:
- * Important Dimension.
 - * Waterproof Rate: IP67, Unmated
 - * Housing: Thermoplastic, Black
 - * Pin: Copper Alloy, Gold Plated
 - * Nut: Thermoplastic, Black
 - * Gasket: Rubber, Gray
 - * Use With Waterproof Cap Or Dust Cap
Panel Thickness Max: 4.0mm.
 - * Use With Out Waterproof Cap Or Dust Cap
Panel Thickness Max: 5.0mm.
 - * Gasket and Nut are packed separately in PE bags.

Pin Assignments Front View Recommended Panel Cut-Out

UNIT:mm		TITLE			ITEM NO	DRAWN BY	DATE
		Standard, Rear Lock 4P M Conn M Pin			BD-04RMMS-LC7002	Ruru	2019-03-14
TOLERANCE		SCALE	SIZE	SHEET	DWG NO	CHECKED BY	DATE
.X ±0.25		3:2	A4	1 OF 1	BD-04RMMS-LC7002	Rita	2019-03-14
.XX ±0.1		REV.	WC-REV.	Inspection item	CUSTOMER	APPROVED BY	DATE
.XXX ±0.05		B	A.6		ALTW	Max	2019-03-14
ANGLES ±1°							

Amphenol LTW
安費諾亮泰企業股份有限公司