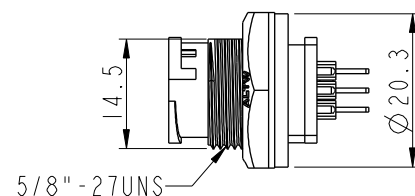
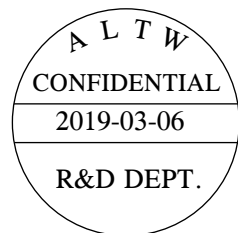
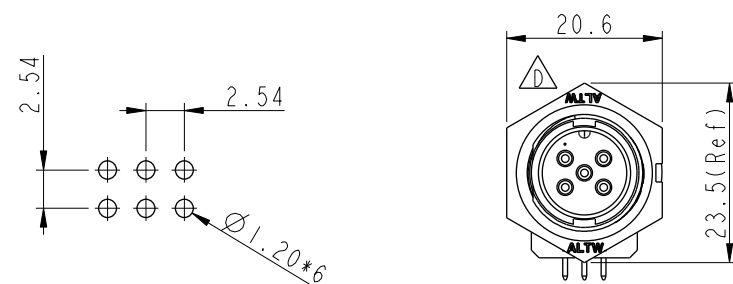


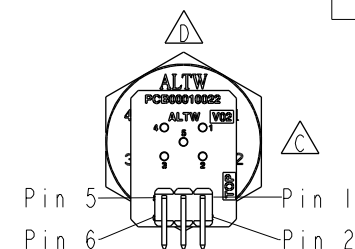
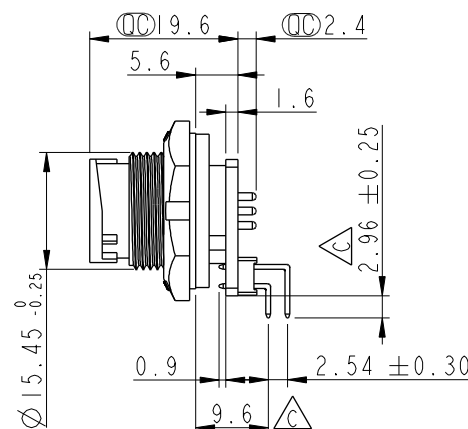
REV.	ECN NO.	DATE	SIGN	DESCRIPTION
B	LEN-8B0382	2008/09/17	Shin	Add Note
C	LEN1680285	2016/08/03	Joyy	Modify The Shape Of The PCB
D	CI90273	2019/03/06	Ruru	Modify Note & Change Logo



	6
5	5
4	4
3	3
2	2
1	1
Conn.	Wafer
Pin Out	



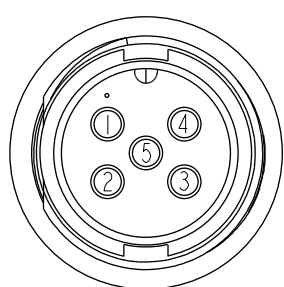
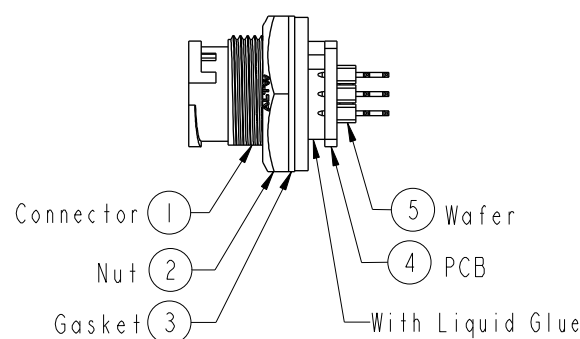
6 Pin Male Connector
Male Pin PCB Layout



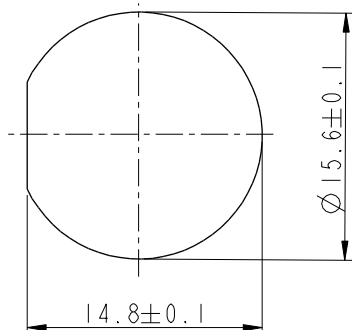
Note:

- * Important Dimension To Check.
- * Waterproof Rate: IP67, Unmated
- * Housing: Thermoplastic, Black
- * Pin: Copper Alloy, Gold Plated
- * Nut: Thermoplastic, Black
- * Gasket: Rubber, Black
- * PCB: FR4 EPOXY Glass
- * Wafer: PH=2.54 雙排, 90°

- * Use With Waterproof Cap Or Dust Cap
Panel Thickness Max: 3.0mm
- * Use Without Waterproof Cap Or Dust Cap
Panel Thickness Max: 4.5mm
- * Gasket and Nut are packed separately
in PE bags.



Pin Assignments
Front View



Recommended Panel Cut-out

UNIT:mm		TITLE Circular Panel Lock 4Pin M Conn M Pin For R/A		Amphenol LTW 安費諾亮泰企業股份有限公司		ITEM NO BD-05PMMR-LC7001	DRAWN BY Ruru	DATE 2019-03-06
TOLERANCE .X ±0.25 .XX ±0.1 .XXX ±0.05 ANGLES ±1°		SCALE 1:1	SIZE A4	SHEET 1 OF 1		DWG NO BD-05PMMR-LC7001	CHECKED BY Rita	DATE 2019-03-06
REV. D		WC-REV. A.3	QC: Inspection item			CUSTOMER ALTW	APPROVED BY Max	DATE 2019-03-06