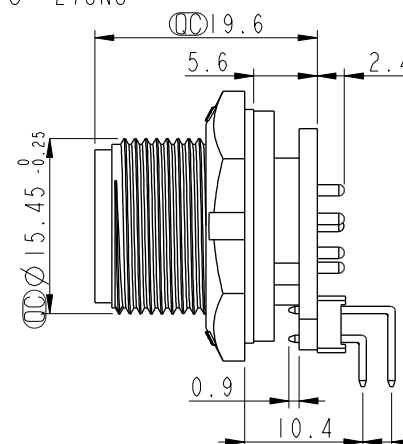
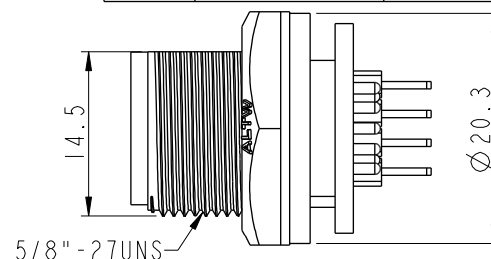
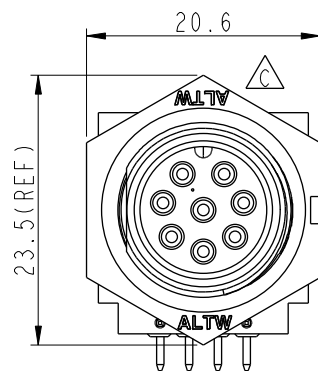


8 Pin Male Connector  
Male Pin PCB Layout



Note:

\* Important Dimension To Check.

\* Waterproof Rate: IP67, Unmated

\* Housing: Thermoplastic, Black

\* Pin: Copper Alloy, Gold Plated

\* Nut: Thermoplastic, Black

\* Gasket: Rubber, Black

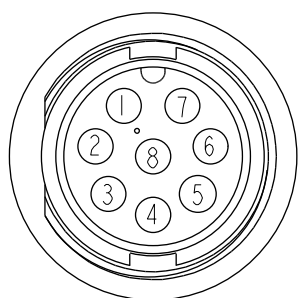
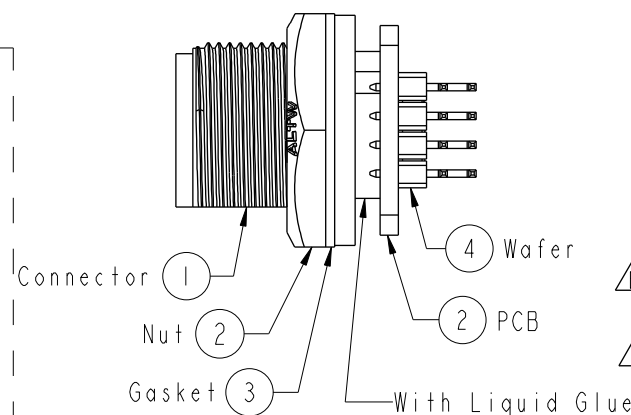
\* PCB: FR4 EPOXY Glass

\* Wafer: PH=2.54 雙排, 90°

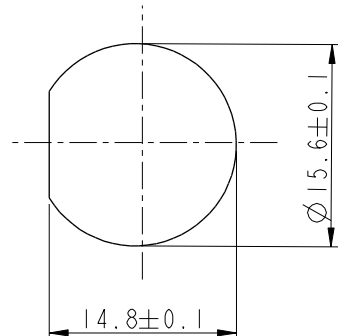
\* Use With Waterproof Cap Or Dust Cap  
Panel Thickness Max: 3.0mm

\* Use Without Waterproof Cap Or Dust Cap  
Panel Thickness Max: 4.0mm

\* Gasket and Nut are packed separately  
in PE bags.

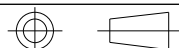


Pin Assignments  
Front View



Recommended Panel Cut-out

UNIT:mm



TOLERANCE  
.X ±0.25  
.XX ±0.1  
.XXX ±0.05  
ANGLES ±1°

TITLE  
Circular Panel Screw  
8Pin M Conn M Pin For R/A

SCALE  
1:1

SIZE  
A4

SHEET  
1 OF 1

REV.  
D

WC-REV.  
A.3

QC: Inspection item

Amphenol LTW

安費諾亮泰企業股份有限公司

ITEM NO  
BD-08PMMR-SC7001

DWG NO  
BD-08PMMR-SC7001

CUSTOMER  
ALTW

DRAWN BY  
Ruru

CHECKED BY  
Rita

APPROVED BY  
Max

DATE  
2019-03-06

DATE  
2019-03-06

DATE  
2019-03-06

THIS DOCUMENT IS SUBJECT TO CHANGE WITHOUT NOTICE. IT IS CONFIDENTIAL AND A PROPERTY OF Amphenol LTW. DISCLOSURE TO THIRD PARTY HAS TO BE AUTHORIZED BY Amphenol LTW.