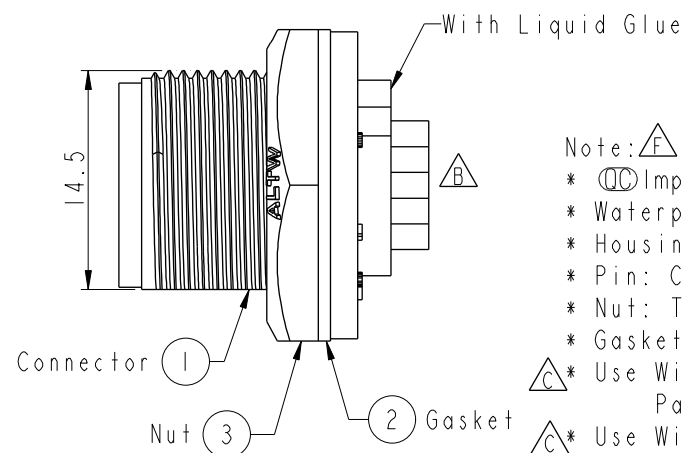
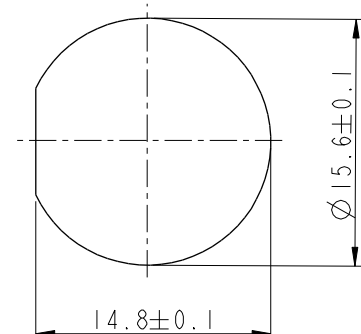
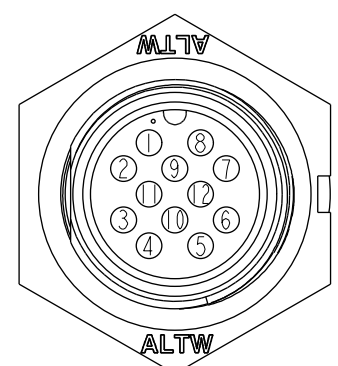
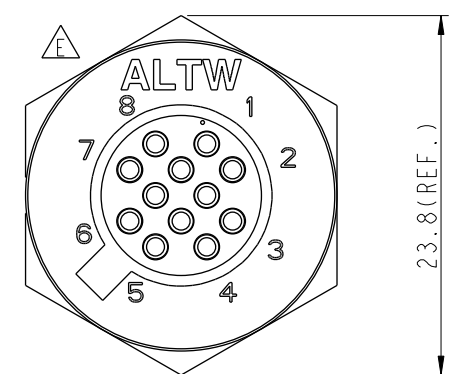
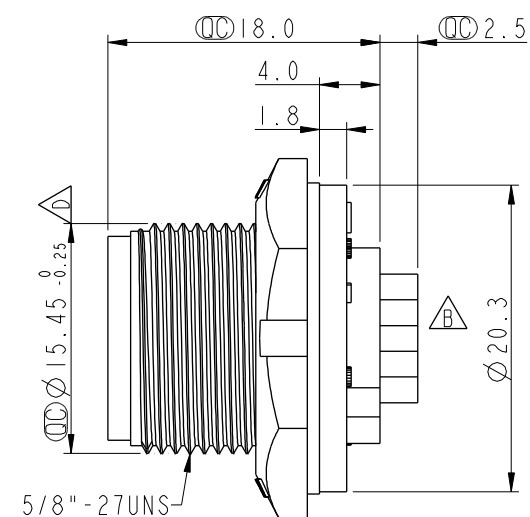
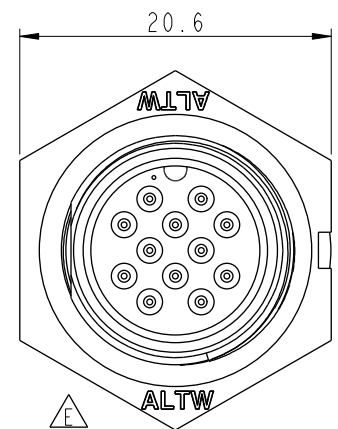
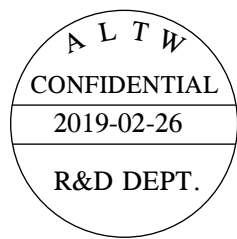



THIS DOCUMENT IS SUBJECT TO CHANGE WITHOUT NOTICE. IT IS CONFIDENTIAL AND A PROPERTY OF Amphenol LTW. DISCLOSURE TO THIRD PARTY HAS TO BE AUTHORIZED BY Amphenol LTW.

REV.	ECN NO.	DATE	SIGN	DESCRIPTION
D	LEN1330121	2013/03/28	Yulong	Change The Dimension
E	LEN1590305	2015/09/02	Vicky	Update Logo
F	CI90269	2019/02/26	Ruru	Modify Note



- Note:
- \* Important Dimension To Check
  - \* Waterproof Rate: IP67, Unmated
  - \* Housing: Thermoplastic, Black
  - \* Pin: Copper Alloy, Gold Plated
  - \* Nut: Thermoplastic, Black
  - \* Gasket: Rubber, Black
  - \* Use With Waterproof Cap Or Dust Cap  
Panel Thickness Max: 3.0mm
  - \* Use Without Waterproof Cap Or Dust Cap  
Panel Thickness Max: 4.0mm
  - \* Gasket and Nut are packed separately in PE bags.

UNIT:mm				TITLE Standard Panel Screw 12Pin M Conn M Pin		Amphenol LTW		ITEM NO BU-12PMMS-SC7001		DRAWN BY Ruru		DATE 2019-02-26			
TOLERANCE .X ±0.25 .XX ±0.1 .XXX ±0.05 ANGLES ±1°		SCALE 2:1		SIZE A4		SHEET 1 OF 1		DWG NO BU-12PMMS-SC7001		CHECKED BY Rita		DATE 2019-02-26			
		REV. F		WC-REV. B.3		QC: Inspection item		CUSTOMER ALTW		APPROVED BY Max		DATE 2019-02-26			
1		2		3		4		5		6		7		8	
														WI0814-03-0001A2	