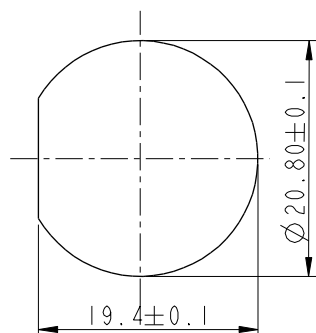
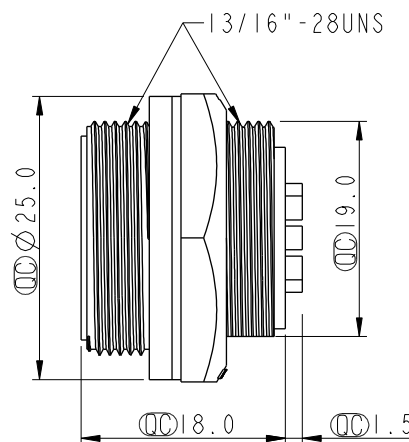


Pin Assignments

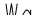


Front View



Recommended Panel Cut-Out



Note: ΔC

- *  Important Dimension.
- * Waterproof Rate: IP67, Unmated
- * Housing: Thermoplastic, Black
- * Pin: Copper Alloy, Gold Plated
- * Nut: Thermoplastic, Black
- * Gasket: Rubber, Black
-  * Use with waterproof cap or dust cap
Maximum Panel Thickness: 3.0mm
-  * Use without waterproof cap or dust cap
Maximum Panel Thickness: 4.0mm
- * Gasket and Nut are packed separately
in PE bags.

UNIT : mm

TOLERANCE	
.X	± 0.25
.XX	± 0.1
.XXX	± 0.05
ANGLES	$\pm 1^{\circ}$

TITLE	DATE	BY	NO.
Middle, Panel Screw			
7Pin M Conn. M Pin			

SCALE

SIZE	A4
------	----

SHEET	OF
-------	----

ection item

Amphenol LTW
安費諾亮泰企業股份有限公司

ITEM NO	CD-07RMMS-SC7001
---------	------------------

DRAWN BY	Ruru
----------	------

DATE	2019-02-27
------	------------

DWG NO
CD-07RMMS-SC7001

CHECKED BY	Rita
------------	------

DATE	2019-02-27
------	------------

CUSTOMER	ALTW
----------	------

APPROVED BY Max

DATE	2019-02-27
------	------------