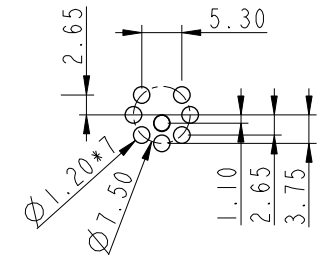
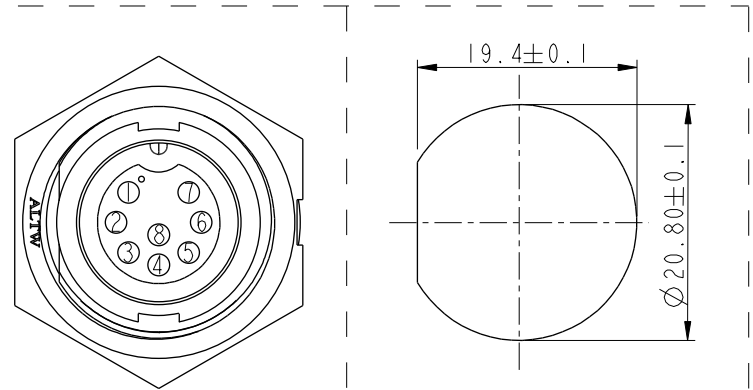


ALTW
CONFIDENTIAL
2019-02-27
R&D DEPT.

REV.	ECN NO.	DATE	SIGN	DESCRIPTION
D	LEN-910262	2008/01/15	TOMMY	CHANGE PIN DIMENSION
E	LEN1630503	2016/03/16	Ruru	Change Logo
F	CI90271	2019/02/27	Ruru	Modify Note

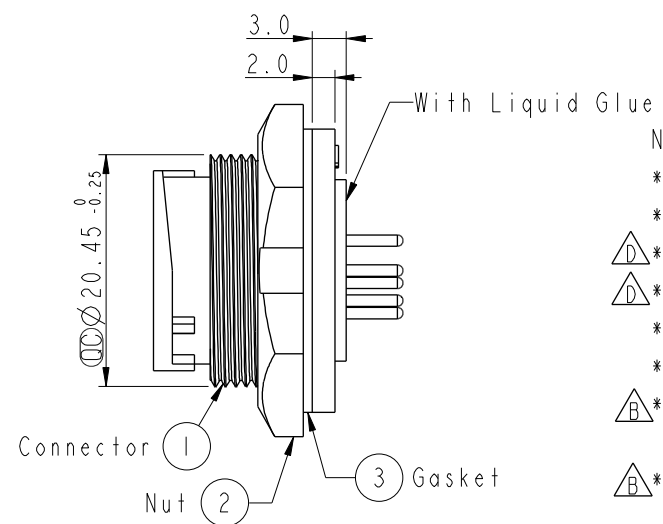
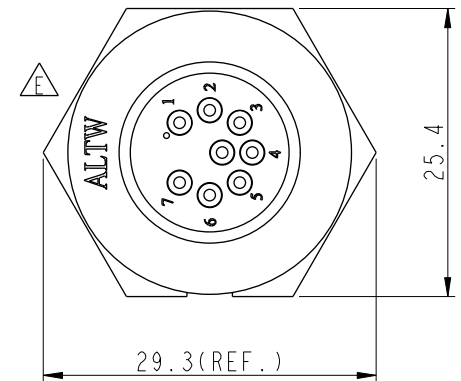
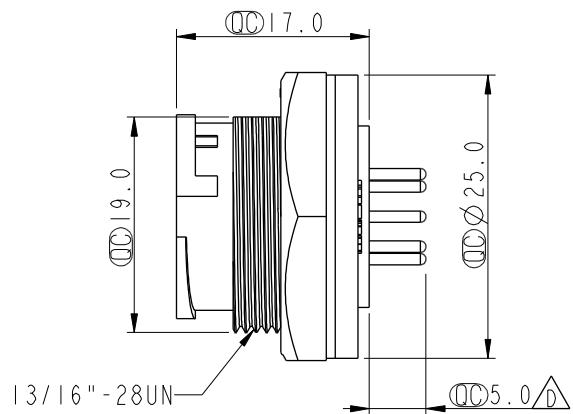


8Pin Male Connector
Female Pin PCB Layout



Pin Assignments
Front View

Recommended Panel Cut-Out



- Note:
- * Important Dimension To Check.
 - * Waterproof Rate: IP67, Unmated
 - * Housing: Thermoplastic, Black
 - * Pin: Copper Alloy, Gold Plated
 - * Nut: Thermoplastic, Black
 - * Gasket: Rubber, Black
 - * Use with waterproof cap or dust cap
Panel Thickness Max: 3.0mm
 - * Use without waterproof cap or dust cap
Panel Thickness Max: 4.0mm
 - * Gasket and Nut are packed separately in PE bags.

UNIT:mm

TOLERANCE

.X ±0.25

.XX ±0.1

.XXX ±0.05

ANGLES ±1°

TITLE

Middle

Panel Lock 8Pin M Conn F Pin

SCALE 1:1

SIZE A4

SHEET 1 OF 1

REV. F

WC-REV. A.3

QC: Inspection item

Amphenol LTW

安費諾亮泰企業股份有限公司

ITEM NO

CD-08PMFP-LC7001

DWG NO

CD-08PMFP-LC7001

CUSTOMER

ALTW

DRAWN BY

Ruru

CHECKED BY

Rita

APPROVED BY

Max

DATE

2019-02-27

DATE

2019-02-27

DATE

2019-02-27

1

2

3

4

5

6

7

8

WI0814-03-0001A2

A

By Amphenol LTW.

THIS DOCUMENT IS SUBJECT TO CHANGE WITHOUT NOTICE. IT IS CONFIDENTIAL AND A PROPERTY OF Amphenol LTW. DISCLOSURE TO THIRD PARTY HAS TO BE AUTHORIZED BY Amphenol LTW.