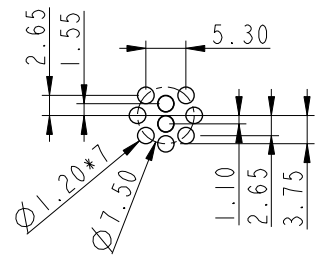
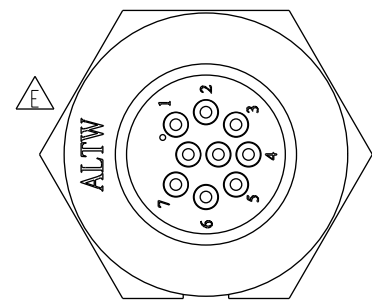
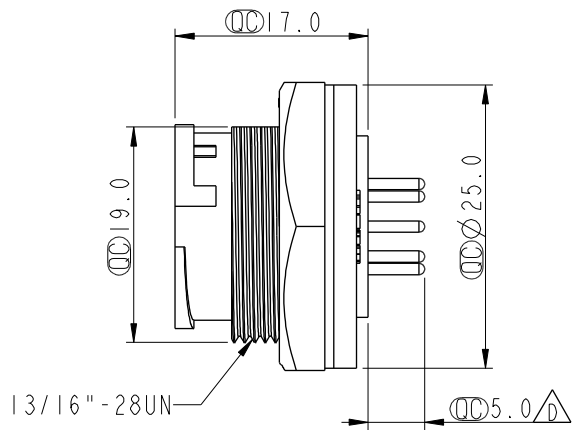
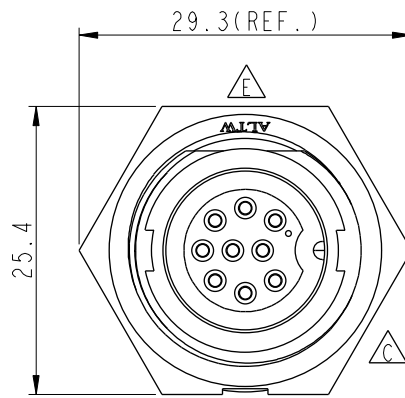
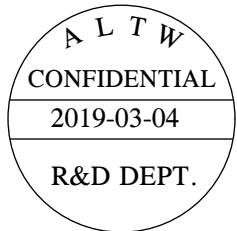
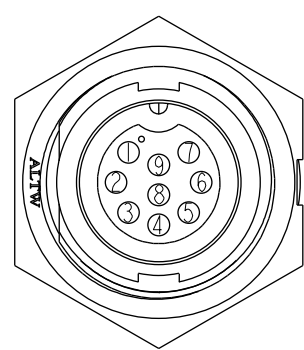


THIS DOCUMENT IS SUBJECT TO CHANGE WITHOUT NOTICE. IT IS CONFIDENTIAL AND A PROPERTY OF Amphenol LTW. DISCLOSURE TO THIRD PARTY HAS TO BE AUTHORIZED BY Amphenol LTW.

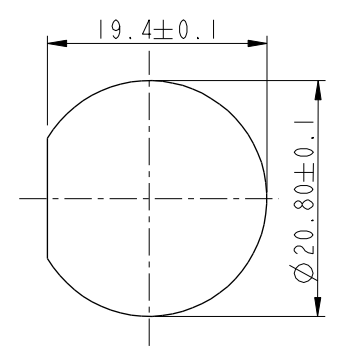
| REV. | ECN NO. | DATE | SIGN | DESCRIPTION |
|------|------------|------------|-------|----------------------|
| D | LEN-910264 | 2008/01/15 | TOMMY | CHANGE PIN DIMENSION |
| E | LEN1630510 | 2016/03/16 | Ruru | Change Logo |
| F | CI90271 | 2019/03/04 | Ruru | Modify Note |



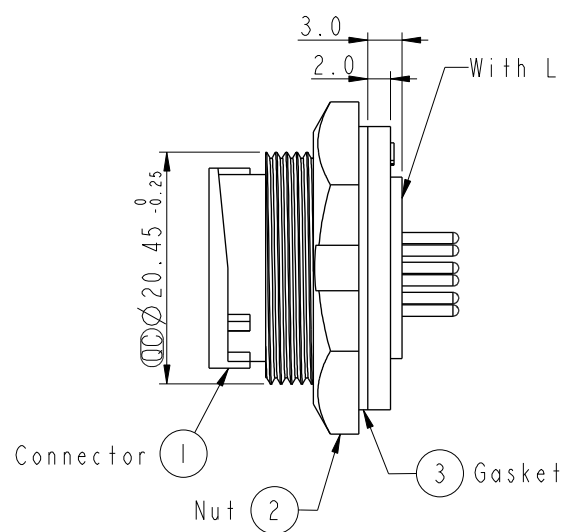
9Pin Male Connector
Female Pin PCB Layout



Pin Assignments
Front View



Recommended Panel Cut-Out



Note:

* Important Dimension To Check.

* Waterproof Rate: IP67, Unmated

* Housing: Thermoplastic, Black

* Pin: Copper Alloy, Gold Plated

* Nut: Thermoplastic, Black

* Gasket: Rubber, Black

* Use with waterproof cap or dust cap
Panel Thickness Max: 3.0mm

* Use without waterproof cap or dust cap
Panel Thickness Max: 4.0mm

* Gasket and Nut are packed separately
in PE bags.

| | | | | | |
|------------|--|---|----------------|-----------------|---------|
| UNIT:mm | | TITLE Middle Panel Lock 9Pin M Conn F Pin | | | |
| TOLERANCE | | SCALE 1:1 | SIZE A4 | SHEET 1 | OF 1 |
| .X ±0.25 | | REV. F | WC-REV. A.3 | Inspection item | |
| .XX ±0.1 | | | | | |
| .XXX ±0.05 | | | | | |
| ANGLES ±1° | | | | | |

Amphenol LTW
安費諾亮泰企業股份有限公司

| | | |
|-----------------------------|--------------------|--------------------|
| ITEM NO CD-09PMFP-LC7001 | DRAWN BY Ruru | DATE 2019-03-04 |
| DWG NO CD-09PMFP-LC7001 | CHECKED BY Rita | DATE 2019-03-04 |
| CUSTOMER ALTW | APPROVED BY Max | DATE 2019-03-04 |