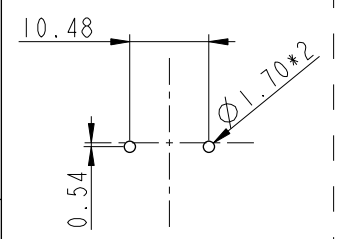
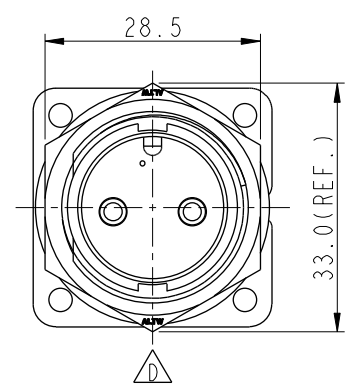
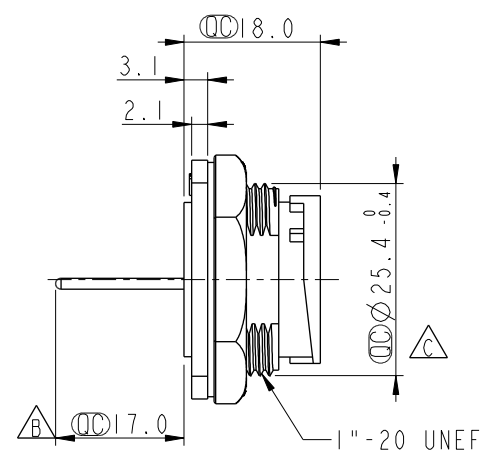
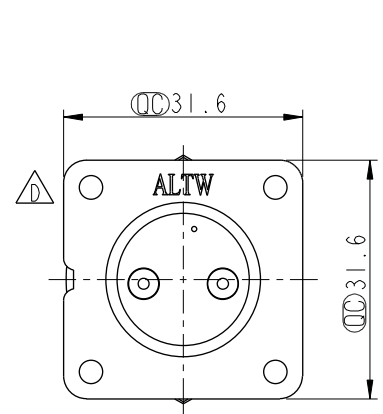
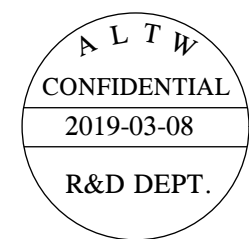
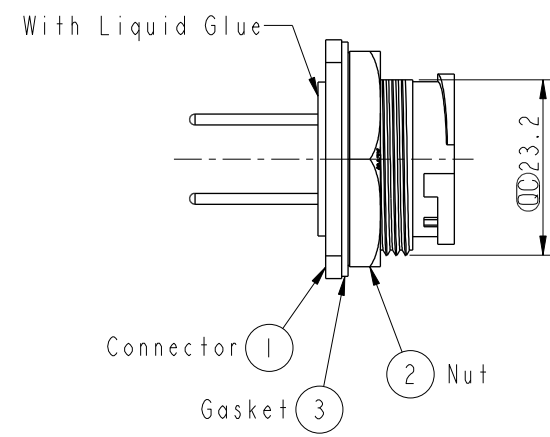


THIS DOCUMENT IS SUBJECT TO CHANGE WITHOUT NOTICE. IT IS CONFIDENTIAL AND A PROPERTY OF Amphenol LTW. DISCLOSURE TO THIRD PARTY HAS TO BE AUTHORIZED BY Amphenol LTW.

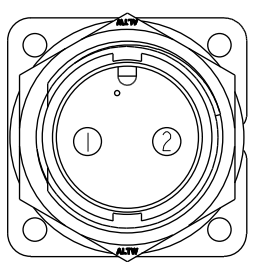
REV.	ECN NO.	DATE	SIGN	DESCRIPTION
C	LEN-8A0177	2008/09/15	Shin	Add Notes
D	LEN1740950	2017/04/11	Vicky	Update Logo
E	CI90310	2019/03/08	Ruru	Modify Note



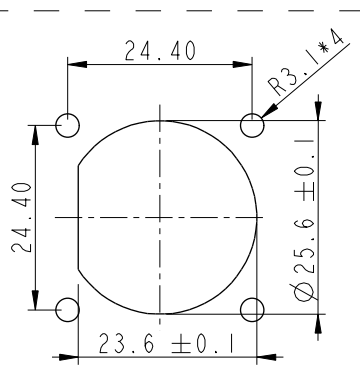
PCB Layout



Connector 1
Gasket 3
Nut 2



Pin Assignments
Front View



Recommended
Panel Cut-Out

- Note:
- * Important Dimension
 - * Waterproof Rate: IP67, Unmated
 - * Housing: Thermoplastic, Black
 - * Pin: Copper Alloy, Gold Plated
 - * Nut: Thermoplastic, Black
 - * Gasket: Rubber, Black
 - * Use Waterproof Cap or Dust Cap
Panel Thickness Max: 3.0mm
 - * Use without Waterproof Cap or Dust Cap
Panel Thickness Max: 4.0mm
 - * Gasket and Nut are packed separately in PE bags.

UNIT:mm		TITLE Large Panel Lock 2Pin M Conn M Pin		Amphenol LTW 安費諾亮泰企業股份有限公司		ITEM NO DC-02PMMP-LS7001	DRAWN BY Ruru	DATE 2019-03-08
TOLERANCE .X ±0.25 .XX ±0.1 .XXX ±0.05 ANGLES ±1°		SCALE 1:1	SIZE A4	SHEET 1 OF 1		DWG NO DC-02PMMP-LS7001	CHECKED BY Rita	DATE 2019-03-08
REV. E		WC-REV. A.3	Inspection item			CUSTOMER ALTW	APPROVED BY Max	DATE 2019-03-08