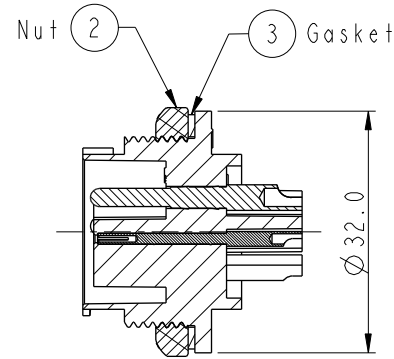
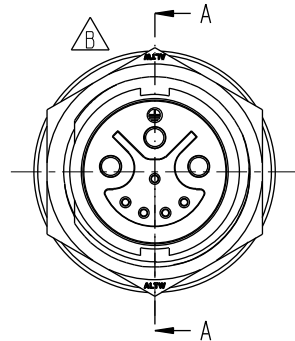
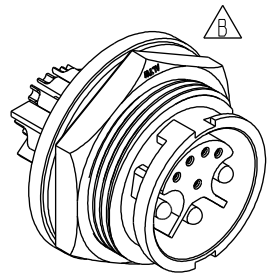
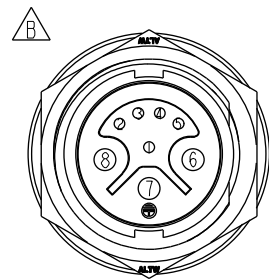
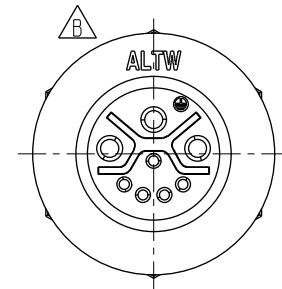


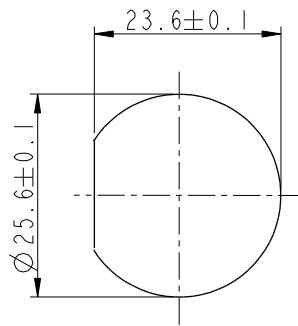
REV.	ECN NO.	DATE	SIGN	DESCRIPTION
B	LEN14C0566	2014/12/19	Sam	Update Logo.
C	CI90314	2019/03/12	Ruru	Modify Note



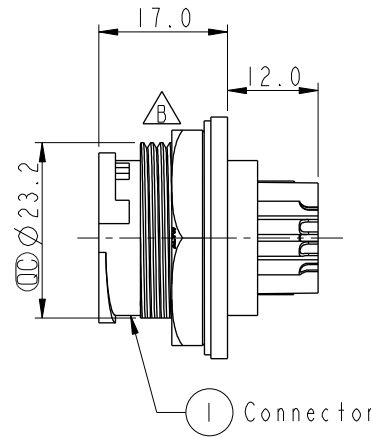
Section A-A




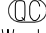
Pin Assignments
Front View



Recommended
Panel Cut-Out



Connector

- Note: 
- *  Important Dimension To Check.
 - * Waterproof Rate: IP67, Unmated
 - * Housing: Thermoplastic, Black
 - * Pin: Copper Alloy, Gold Plated
 - * Nut: Thermoplastic, Black
 - * Gasket: Rubber, Gray
 - * Use With Waterproof Cap Or Dust Cap
Panel Thickness Max.: 3.0mm
 - * Use Without Waterproof Cap Or Dust Cap
Panel Thickness Max.: 4.0mm
 - * Gasket and Nut are packed separately
in PE bags.

UNIT:mm	
TOLERANCE	
.X	±0.25
.XX	±0.1
.XXX	±0.05
ANGLES	±1°

TITLE Panel Connector 3MPin(20A)+5FPin(2A)			
SCALE 1:1	SIZE A4	SHEET 1 OF 1	
REV. C	WC-REV. A.6	QC: Inspection item	

Amphenol LTW
安費諾亮泰企業股份有限公司

ITEM NO DCU-08PMES-LC7001	DRAWN BY Ruru	DATE 2019-03-12
DWG NO DCU-08PMES-LC7001	CHECKED BY Rita	DATE 2019-03-12
CUSTOMER ALTW	APPROVED BY Max	DATE 2019-03-12

THIS DOCUMENT IS SUBJECT TO CHANGE WITHOUT NOTICE. IT IS CONFIDENTIAL AND A PROPERTY OF Amphenol LTW. DISCLOSURE TO THIRD PARTY HAS TO BE AUTHORIZED BY Amphenol LTW.