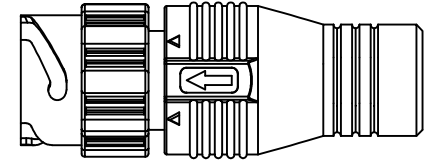
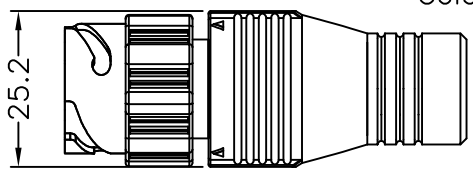
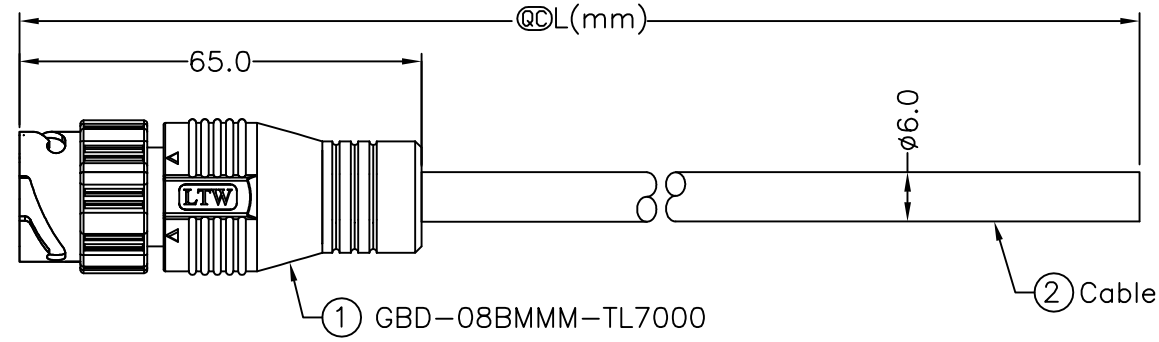
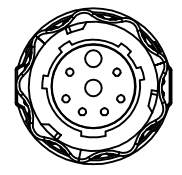
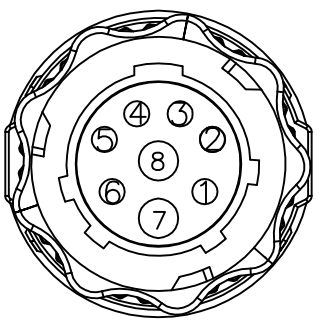


5	6	7	8
REV.	ECN NO.	DATE	SIGN

THIS DOCUMENT IS SUBJECT TO CHANGE WITHOUT NOTICE. IT IS CONFIDENTIAL AND A PROPERTY OF Amphenol LTW. DISCLOSURE TO THIRD PARTY HAS TO BE AUTHORIZED BY Amphenol LTW.

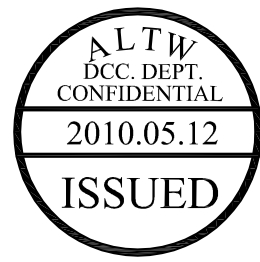


GBD-08BMMM-TL7AXX
 ↑
 XX:01~99Meter
 01:01Meter
 02:02Meters
 ⋮
 99:99Meters
 Cable Length(L):01~99Meters



Pin Assignments
Front View 前視圖

1	Black (24AWG)	黑
2	Brown (24AWG)	棕
3	Red (24AWG)	紅
4	Orange (24AWG)	橘
5	Yellow (24AWG)	黃
6	Purple (24AWG)	紫
7	Green (20AWG)	綠
8	Blue (20AWG)	藍
Conn.	Wire Color	



- Notes:
- * @C Important Dimension To Check
 - * Waterproof Rate: IP67
 - * Connector: Black, PBT+PC.
 - * Male Pin: Copper Alloy, Gold Plated.
 - * Cable: UL2464 (20#*2C+24#*6C)+D+A,Black, PVC Jacket, UV Resistant, OD=6.0mm.
 - * Cable Length Tolerance: 01M:±40mm
 02M~05M:±60mm
 06M~10M:±100mm
 11M~30M:±200mm
 31M~99M:±500mm

UNIT:mm	TITLE 三點卡合 G Size		Amphenol LTW	ITEM NO	DRAWN BY	DATE
TOLERANCE ±0.5 mm	Cable Lock 8P M Conn M Pin			DWG NO GBD-08BMMM-TL7AXX	Jimmy	2010/05/04
SCALE Free	SHEET 1 OF 1	安費諾亮泰企業股份有限公司		CHECKED BY Dominic	DATE 2010/05/04	
REV. A	SIZE A4	@C :Inspection Item		APPROVED BY Win	DATE 2010/05/04	