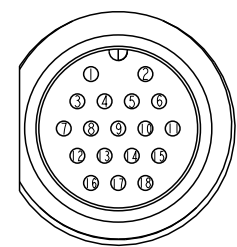
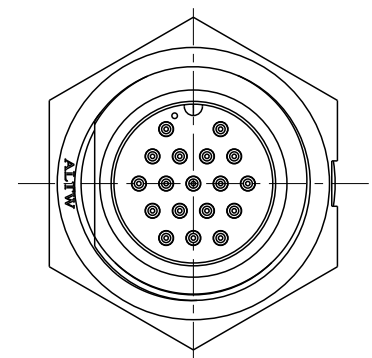
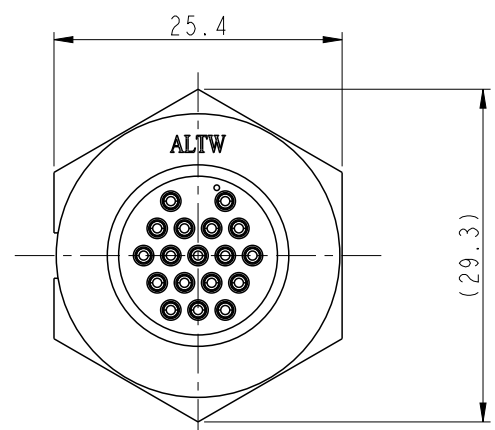
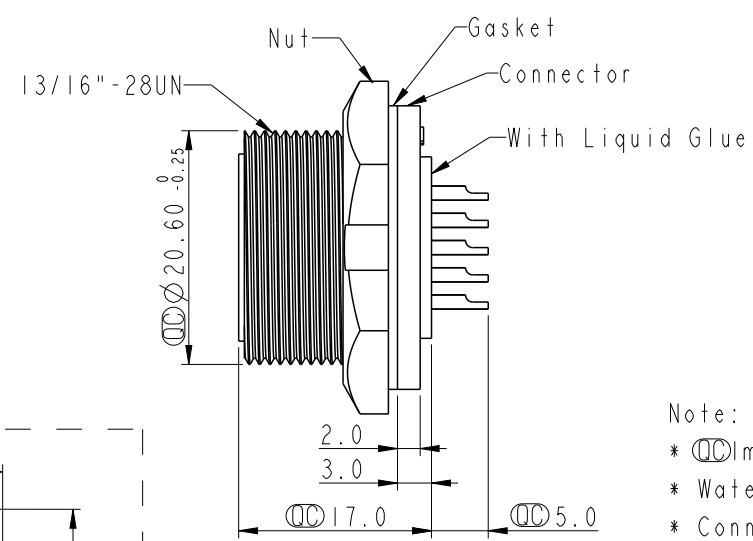
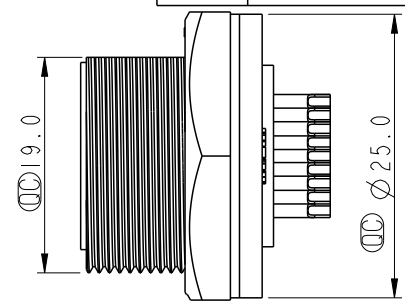
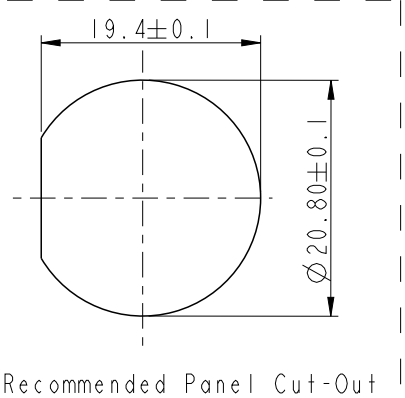


THIS DOCUMENT IS SUBJECT TO CHANGE WITHOUT NOTICE. IT IS CONFIDENTIAL AND A PROPERTY OF Amphenol LTW. DISCLOSURE TO THIRD PARTY HAS TO BE AUTHORIZED BY Amphenol LTW.

| REV. | ECN NO. | DATE       | SIGN  | DESCRIPTION  |
|------|---------|------------|-------|--------------|
| A    | -       | 2020/09/02 | Allen | New Initial. |
|      |         |            |       |              |
|      |         |            |       |              |



Pin Assignments  
Front View



Recommended Panel Cut-Out

- Note:
- \*  $\varnothing$  Important Dimension.
  - \* Waterproof Rate: IP67, Unmated
  - \* Connector: Thermoplastic, Black
  - \* Pin: Copper Alloy, Gold Plated
  - \* Nut: Thermoplastic, Black
  - \* Gasket: Rubber, Black
  - \* Use with waterproof cap or dust cap  
For Panel Thickness Max: 2.0mm
  - \* Use without waterproof cap or dust cap  
For Panel Thickness Max: 3.0mm
  - \* Gasket and Nut are packed separately in PE bags.

|   |  |  |                     |                 |                            |                             |                    |                    |
|---|--|--|---------------------|-----------------|----------------------------|-----------------------------|--------------------|--------------------|
| UNIT:mm   |  | TITLE<br>O CERES, C-2A, 18P, FRONT FASTENED<br>M, M, SOLDER, SCREW |                     | Amphenol LTW    |                            | ITEM NO<br>CU-18PMMS-SC7001 | DRAWN BY<br>Allen  | DATE<br>2020/09/02 |
| TOLERANCE<br>.X ±0.25<br>.XX ±0.1<br>.XXX ±0.05<br>ANGLES ±1° |  | SCALE<br>3:2   | SIZE<br>A4          | SHEET<br>1 OF 1 | DWG NO<br>CU-18PMMS-SC7001 |                             | CHECKED BY<br>Wen  | DATE<br>2020/09/02 |
| REV.<br>A   |  | WC-REV.<br>A.3   | QC: Inspection item |                 | CUSTOMER<br>ALTW           |                             | APPROVED BY<br>Neo | DATE<br>2020/09/02 |

安費諾亮泰企業股份有限公司