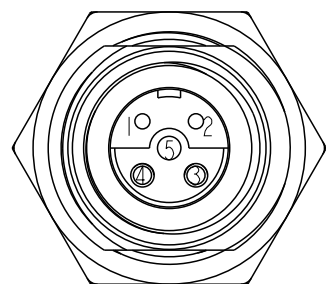
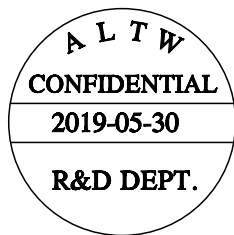
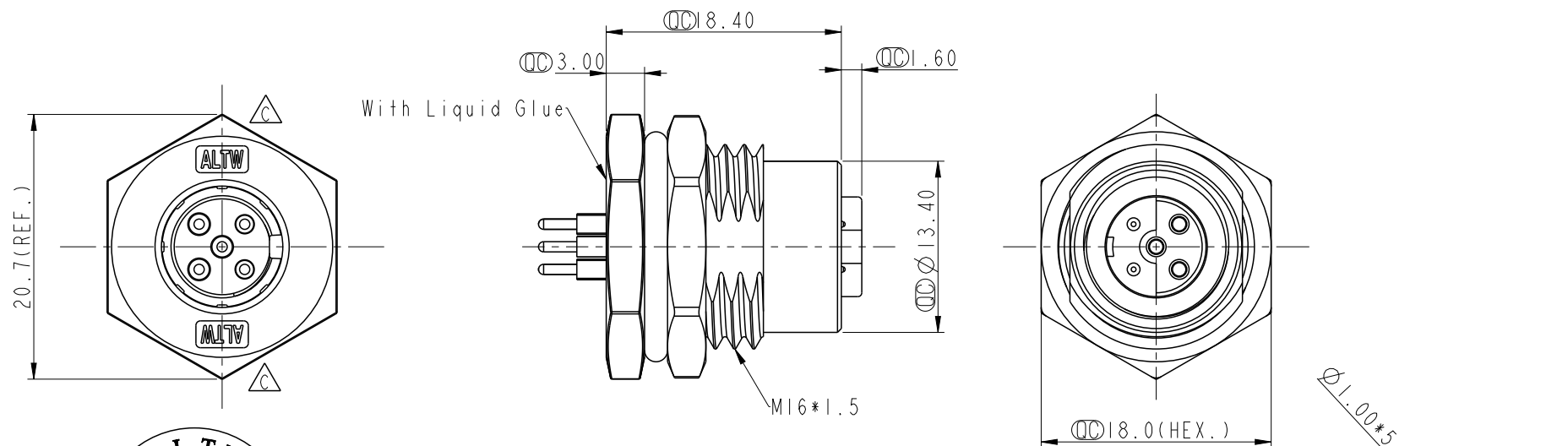
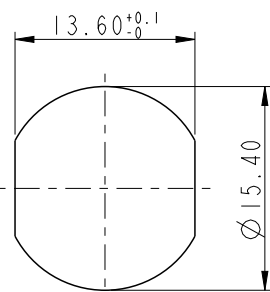


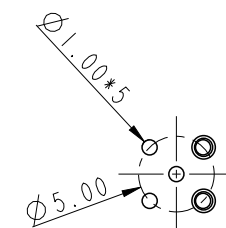
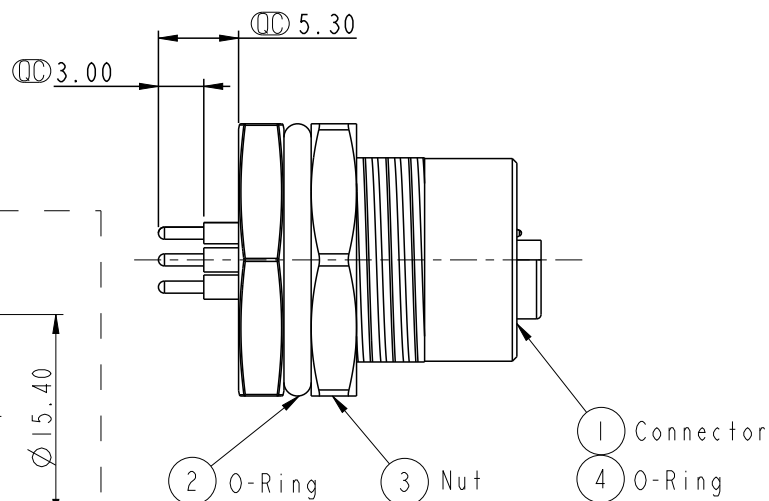
REV.	ECN NO.	DATE	SIGN	DESCRIPTION
C	C190859	2019/05/30	Cynthia	Updated The Logo



Pin Assignments
Front View



Recommended Panel Cut-Out



5Pin Female Connector
I Style PCB Layout

- Note:
- * \varnothing Important Dimension.
 - * Waterproof Rate: IP68
 - * Housing: Black, Nylon+GF
 - * Pin: Copper Alloy, Gold Plated
 - * O-Ring : Black, EPDM
 - * Nut: Zinc Alloy, Nickel Plated
 - * Shield: Zinc Alloy, Nickel Plated
 - * Liquid Glue: Clear
 - * For Panel Thickness Max 4.5mm
 - * Nut Torque: 4-6 kgf.cm



UNIT:mm		TITLE		ITEM NO		DRAWN BY		DATE	
		M12 Conn		12-05PFIP-SF8003		Cynthia		2019-05-30	
		Panel Screw 5Pin F Conn C Pin		DWG NO		CHECKED BY		DATE	
				12-05PFIP-SF8003		Wen		2019-05-30	
				CUSTOMER		APPROVED BY		DATE	
				ALTW		Neo		2019-05-30	

TOLERANCE	
.X	±0.25
.XX	±0.1
.XXX	±0.05
ANGLES	±1°

SCALE	2:1	SIZE	A4	SHEET	1	OF	1
REV.	C	WC-REV.	A.3	QC: Inspection item			

Amphenol LTW
安費諾亮泰企業股份有限公司