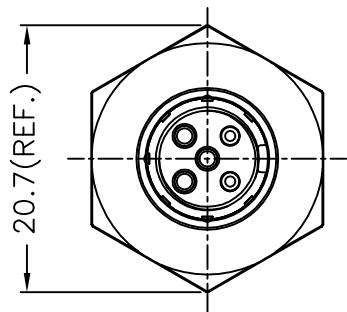
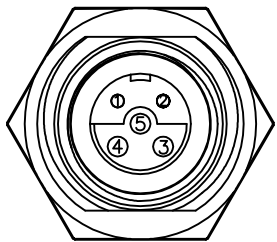
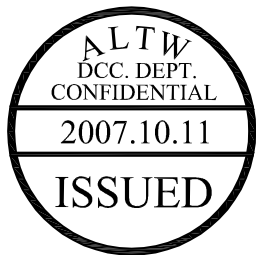


F
E
D
C
B
A

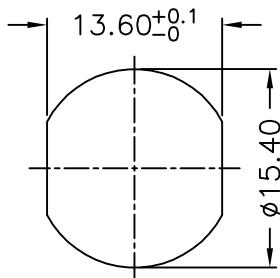
THIS DOCUMENT IS SUBJECT TO CHANGE WITHOUT NOTICE. IT IS CONFIDENTIAL AND A PROPERTY OF Amphenol LTW. DISCLOSURE TO THIRD PARTY HAS TO BE AUTHORIZED BY Amphenol LTW.



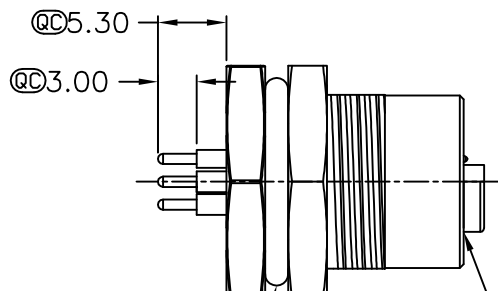
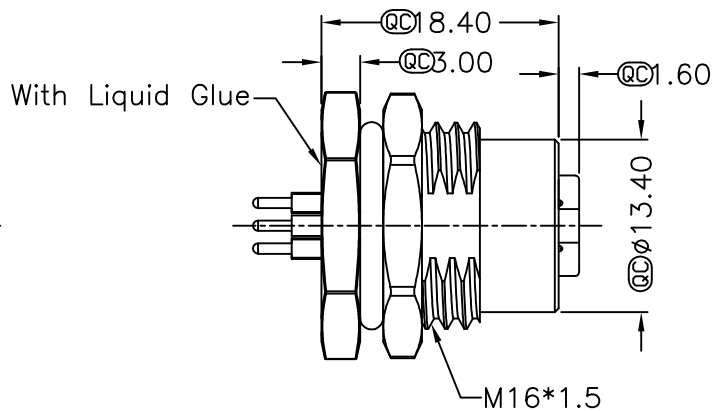
20.7(REF.)



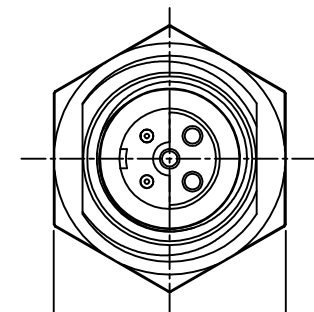
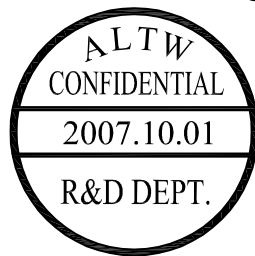
Pin Assignments
Front View



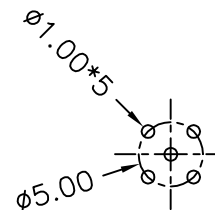
Recommended Panel Cut-Out



O-Ring ② ③ Nut ① Connector ④ O-Ring



QC 18.0(HEX.)



5Pin Female Connector
I Style PCB Layout

Note:

- * QC Important Dimension.
- * Waterproof Rate: IP68
- * Housing: Black,Nylon+GF
- * Pin: Copper Alloy, Gold Plated
- * O-Ring : Black,EPDM
- * Nut: Zinc Alloy,Nickel Plated
- * Shield: Zinc Alloy,Nickel Plated
- * Liquid Glue: Clear
- * For Panel Thickness Max 4.5mm
- * Nut Torque: 4-6 kgf.cm