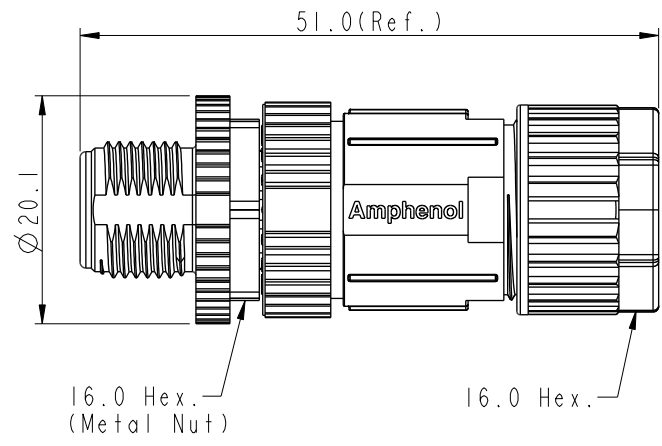
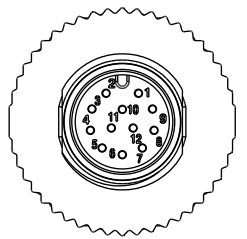
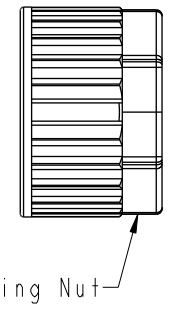
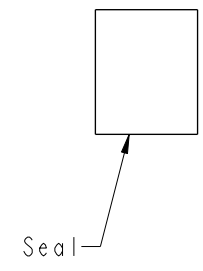
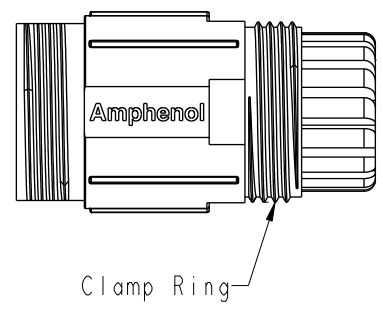
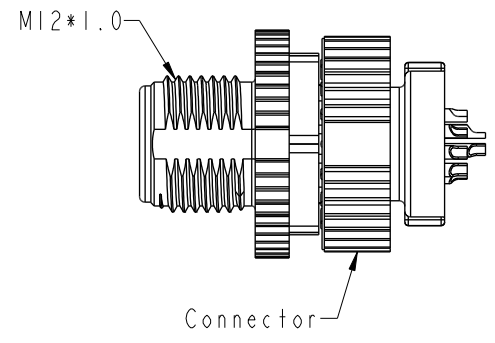


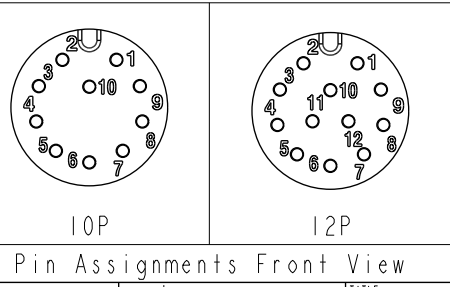
THIS DOCUMENT IS SUBJECT TO CHANGE WITHOUT NOTICE. IT IS CONFIDENTIAL AND A PROPERTY OF Amphenol LTW. DISCLOSURE TO THIRD PARTY HAS TO BE AUTHORIZED BY Amphenol LTW.

REV.	ECN NO.	DATE	SIGN	DESCRIPTION
B	C201472	2020/09/28	Vicky	\triangle_B X4
C	C210561	2021/04/09	Vicky	\triangle_C X2
D	C221877	2022/12/09	Ruru	\triangle_D X1



- $\triangle_B \triangle_C$
Note:
- * RoHS Compliant
 - * CC Important Dimension
 - \triangle_D * Waterproof rate: IP67, mated
 - * Connector
 - Housing: Thermoplastic, Black
 - Pin: Copper alloy, Gold plated
 - Extension Nut: Thermoplastic, Black
 - Nut: Metal
 - O-Ring: Rubber, Gray
 - * Clamp Ring: Thermoplastic, Black
 - * Sealing Nut: Thermoplastic, Black
 - * Seal: Rubber, Gray, OD: $\varnothing 4.0\text{mm} \sim \varnothing 8.0\text{mm}$
 - * One set unassembled in one pe bag

\triangle_B M12A-XXBMM-SL7001
XX: No. Of Pin



UNIT:mm			TITLE
TOLERANCE	.X ± 0.25	.XX ± 0.1	N SEN, M12 A, SCREW
.XXX ± 0.05	ANGLES $\pm 1^\circ$	SCALE 1:1	CABLE W/O SR, M, M, FI SOLDER
REV. D	WC-REV. A.1	SIZE A4	$\triangle_B \triangle_C$
		SHEET 1 OF 1	CC : Inspection item

Amphenol LTW
安費諾亮泰企業股份有限公司

ITEM NO	DRAWN BY	DATE
	Lu Di	2015-05-04
DWG NO	CHECKED BY	DATE
\triangle_B M12A-XXBMM-SL7001	Joyy	2015-05-04
CUSTOMER	APPROVED BY	DATE
ALTW	Jimmy	2015-05-04