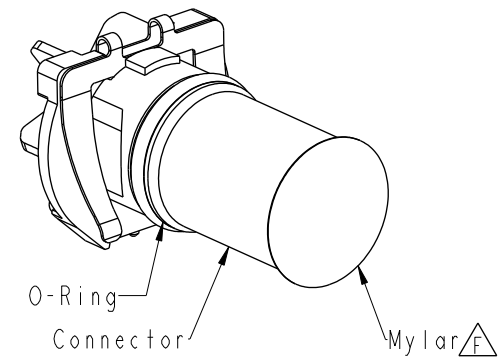


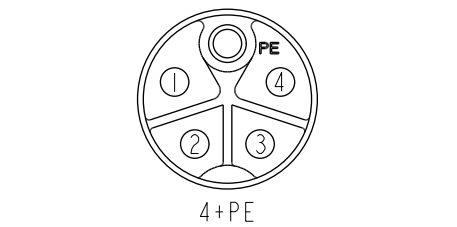
REV.	ECN NO.	DATE	SIGN	DESCRIPTION
D	C220490	2022-03-24	Allen Pan	$\triangle D$ X2
E	C220584	2022-04-18	Allen Pan	$\triangle E$ X2
F	C221159	2022-07-28	Allen Pan	$\triangle F$ X4



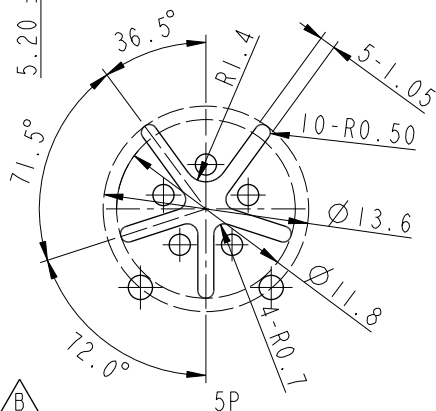
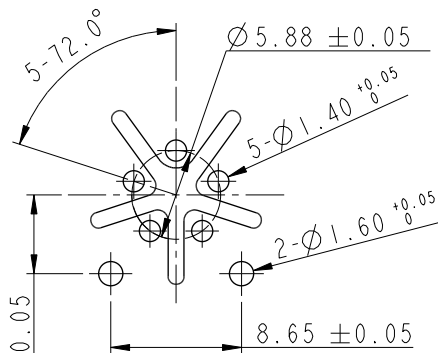
M12K-XXPMEP-EE0002

XX: No. Of Pin $\triangle B$

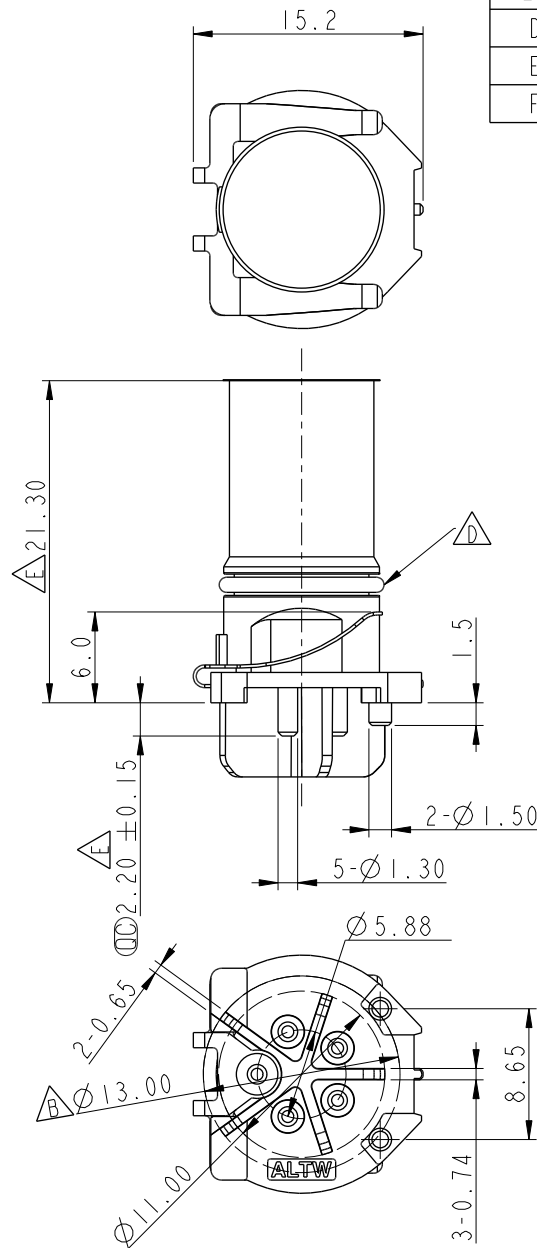
- $\triangle C$   $\triangle F$  Note:
- \* RoHS Compliant
  - \*  $\text{⌀}$  Important Dimension
  - \* Waterproof Rate: Non-Waterproof
  - \* Connector
  - Housing: Thermoplastic, Black
  - Pin: Copper alloy, Gold plated
  - $\triangle D$  O-Ring: Rubber, Gray
  - Spring: Metal
  - \* Mylar: PI, Amber



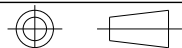
Pin Assignment  
Front View



PCB Layout



UNIT:mm



TOLERANCE  
.X ±0.25  
.XX ±0.1  
.XXX ±0.05  
ANGLES ±1°

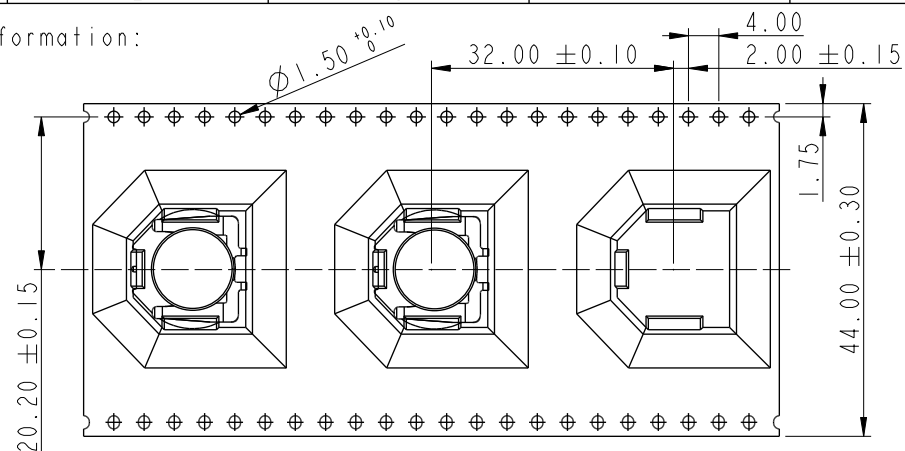
TITLE  
N SEN, M12 K, NONE  
RECEPTACLE, M, M PWR+F GND, PCB S

SCALE 2:1 SIZE A4 SHEET 1 OF 3  
REV. F WC-REV. A.2  $\text{⌀}$  Inspection item

**Amphenol LTW**  
安費諾亮泰企業股份有限公司

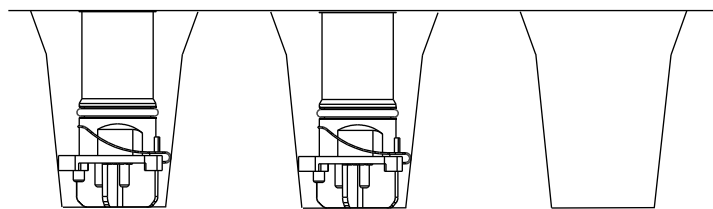
ITEM NO	DRAWN BY Allen Pan	DATE 2020-12-03
DWG NO M12K-XXPMEP-EE0002	CHECKED BY Sam Ho	DATE 2020-12-03
CUSTOMER ALTW	APPROVED BY Fred Lee	DATE 2020-12-03

Tape &amp; Reel Information:



Note:  
\* Connector Orientation Follow Drawing

Top of Reel →



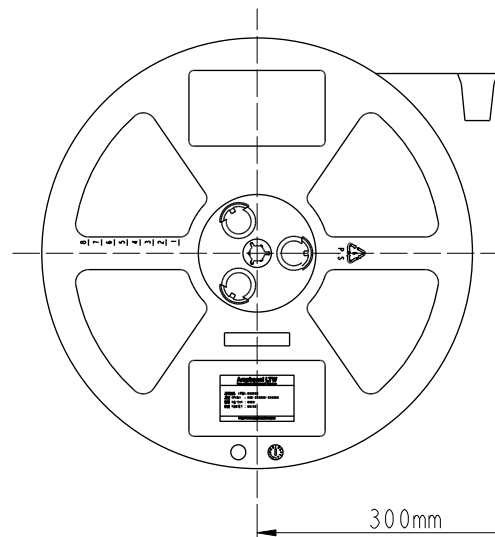
44.5 (Ref.)

Ø 330 (Ref.)

Top of Reel →

Wide Cover Tape Around  
Out Periphery 1 Turn

Peeling Strength 0.1~1.3N Max.  
(300±10mm/min)  
Peeling Angle  
165~180°

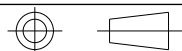


300mm  
With Empty  
Compartments

70 PCS/Reel  
With Product Charge

300mm  
With Empty  
Compartments

UNIT: mm



TOLERANCE  
.X ±0.25  
.XX ±0.1  
.XXX ±0.05  
ANGLES ±1°

TITLE

N SEN, M12 K, NONE  
RECEPTACLE, M, M PWR+F GND, PCB S

SCALE

1:1

SIZE

A4

SHEET

2

OF

3

REV.

F

WC-REV.

A.2

Inspection item

# Amphenol LTW

安費諾亮泰企業股份有限公司

ITEM NO

DWG NO

CUSTOMER

ALTW

DRAWN BY

Allen Pan

CHECKED BY

Sam Ho

APPROVED BY

Fred Lee

DATE

2020-12-03

DATE

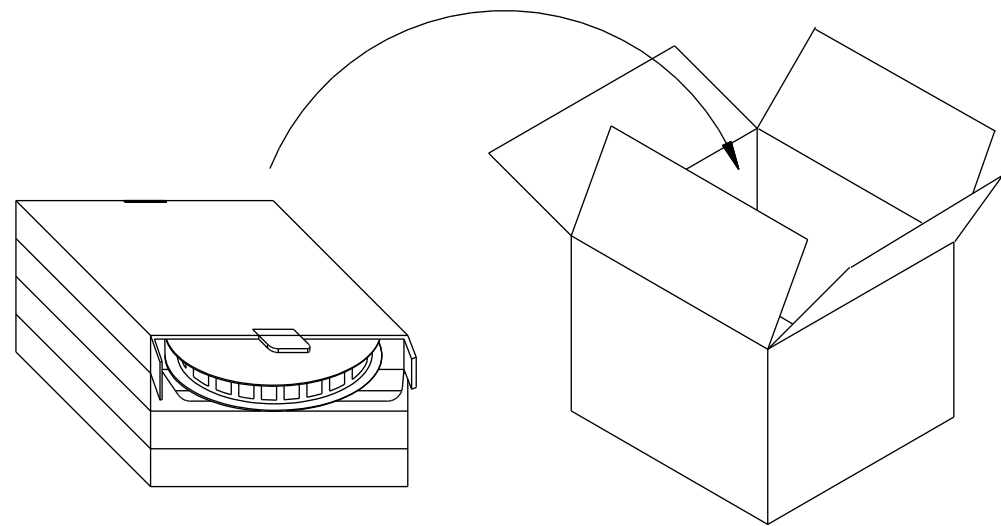
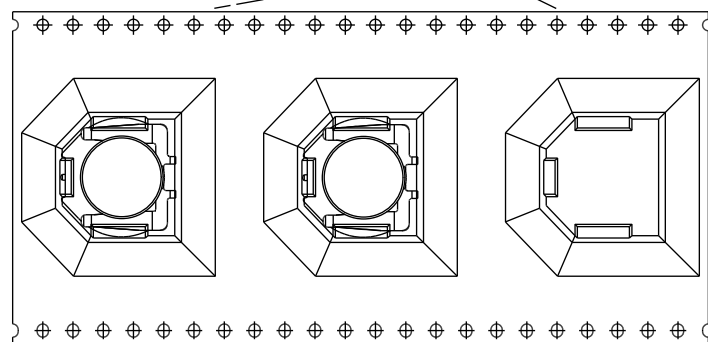
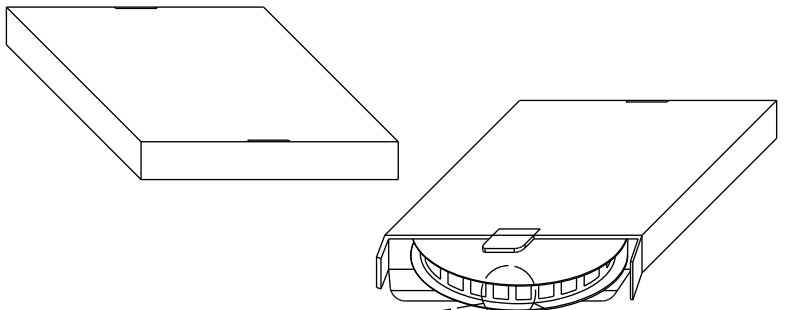
2020-12-03

DATE

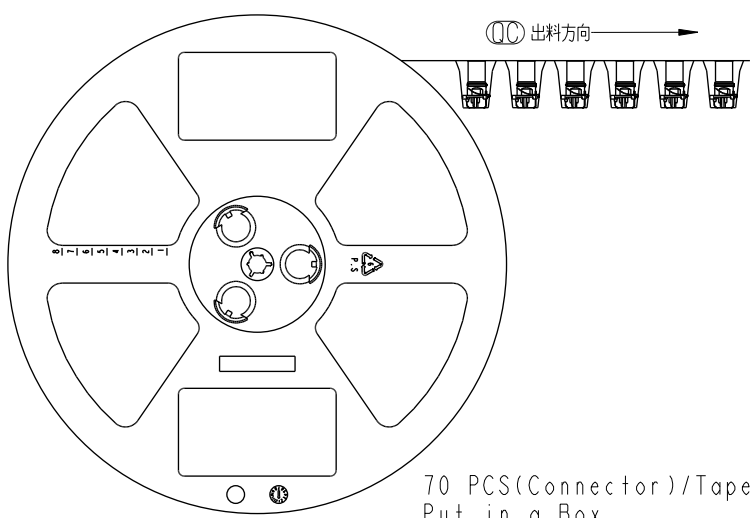
2020-12-03

THIS DOCUMENT IS SUBJECT TO CHANGE WITHOUT NOTICE. IT IS CONFIDENTIAL AND A PROPERTY OF Amphenol LTW. DISCLOSURE TO THIRD PARTY HAS TO BE AUTHORIZED BY Amphenol LTW.

Package:



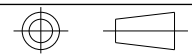
One Carton can put in the 4PCS Box  
(280 PCS/Carton)



出料方向

70 PCS(Connector)/Tape&Reel,  
Put in a Box

UNIT:mm



TOLERANCE  
.X ±0.25  
.XX ±0.1  
.XXX ±0.05  
ANGLES ±1°

TITLE  
N SEN, M12 K, NONE  
RECEPTACLE, M, M PWR+F GND, PCB S

SCALE 1:1 SIZE A4 SHEET 3 OF 3

REV. F WC-REV. A.2 QC:Inspection item

**Amphenol LTW**  
安費諾亮泰企業股份有限公司

ITEM NO  
DWG NO  
M12K-XXPMEP-EE0002  
CUSTOMER  
ALTW

DRAWN BY  
Allen Pan  
CHECKED BY  
Sam Ho  
APPROVED BY  
Fred Lee

DATE  
2020-12-03  
DATE  
2020-12-03  
DATE  
2020-12-03