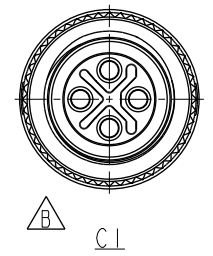
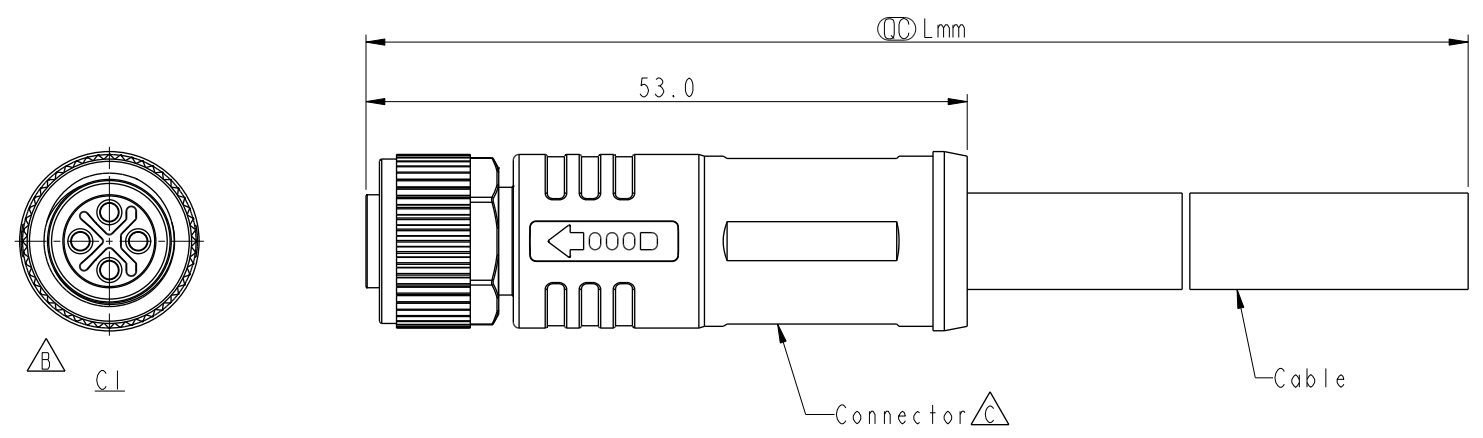


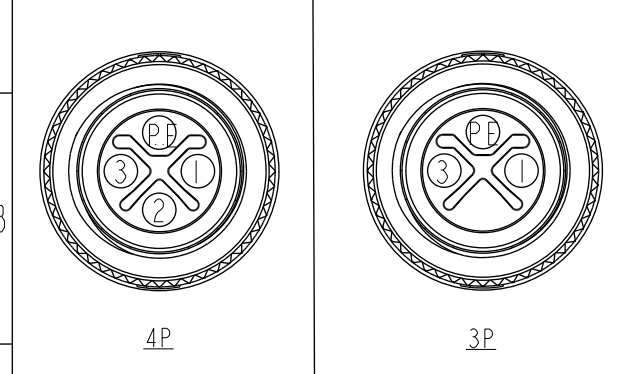
THIS DOCUMENT IS SUBJECT TO CHANGE WITHOUT NOTICE. IT IS CONFIDENTIAL AND A PROPERTY OF Amphenol LTW. DISCLOSURE TO THIRD PARTY HAS TO BE AUTHORIZED BY Amphenol LTW.

REV.	ECN NO.	DATE	SIGN	DESCRIPTION
A		2021/03/04	Carl Dong	Rev.01 to Rev.A
B	C210418	2021/03/19	Carl Dong	$\triangle B$ X1
C	C221951	2022/12/19	Ruru	$\triangle C$ X3



PE Yellow/Green 黃/綠	PE Yellow/Green 黃/綠
3 Blue 藍	3 Blue 藍
2 White 白	2 --
1 Brown 棕	1 Brown 棕

Pin#	Wire	Pin#	Wire
------	------	------	------



MSSP-XXBFFM-SL8SXX
 XX: 01~99Meters
 01: 01Meter
 :
 99: 99Meters
 XX: Number of Pin

- Note:
- * RoHS Compliant
 - * $\text{\textcircled{C}}$ Important Dimension to Check
 - * $\triangle C$ Waterproof rate: IP68, mated 1m/24h IP69K, mated
 - * Connector:
 - Housing: Thermoplastic, Black
 - Pin: Copper Alloy, Gold Plated
 - Nut: Thermoplastic, Black
 - Outer Mold: Thermoplastic, Black
 - * Cable: UL20234, 16AWG, PU Jacket, Black
 - * Cable Length Tolerance: 01M: +50/-0mm
 - 1M < L \leq 3M: +100/-0 mm
 - 3M < L \leq 5M: +150/-0 mm
 - 5M < L \leq 10M: \pm 100 mm
 - 10M < L \leq 20M: \pm 200 mm
 - 20M < L \leq 30M: \pm 300 mm
 - 30M < L \leq 99M: \pm 500 mm

Pin Assignments Front View

UNIT:mm		TITLE	N SEN, M12 S -PLASTIC, SCREW CABLE W/O SR, F, F, MOLDING $\triangle C$		
TOLERANCE	$\pm 0.5\text{mm}$	SCALE	3:2	SIZE	A4
		REV.	C	WC-REV.	.0
			$\text{\textcircled{C}}$: Inspection item	SHEET	1 OF 1

Amphenol LTW
 安費諾亮泰企業股份有限公司

ITEM NO	DRAWN BY	DATE
	Carl Dong	2021-03-03
DWG NO	CHECKED BY	DATE
MSSP-XXBFFM-SL8SXX	Fisher Wang	2021-03-03
CUSTOMER	APPROVED BY	DATE
ALTW	Max Yang	2021-03-03