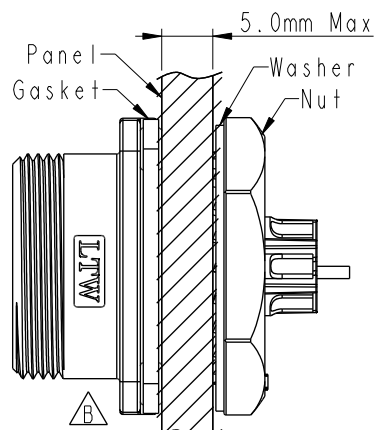
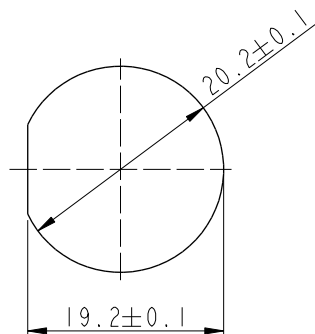
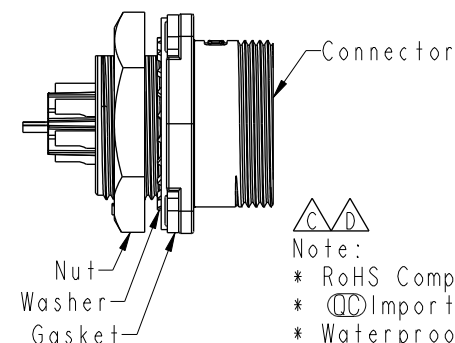
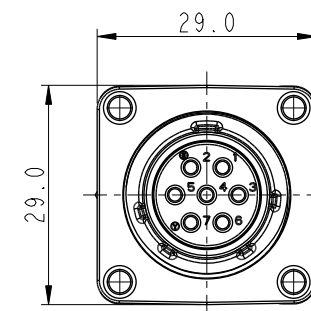
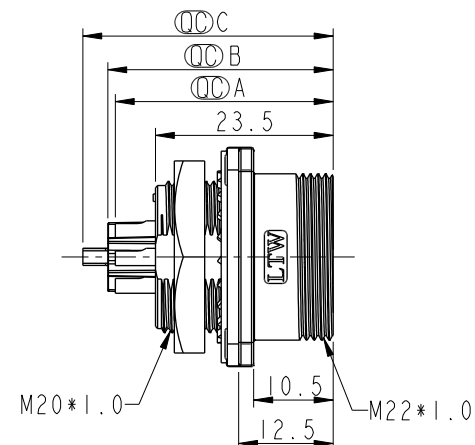
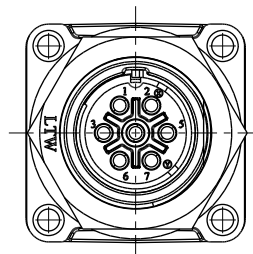


REV.	ECN NO.	DATE	SIGN	DESCRIPTION
C	LE31650211	2016/05/03	Vicky	Update Note
D	C210669	2021/04/29	Vicky	△X5
E	C220337	2022/03/02	Vicky	△XI



Recommend Panel Cut-Out

Assembly Instruction



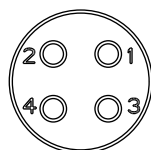
Note:

- * RoHS Compliant
- * Ⓢ Important dimension
- * Waterproof rate: IPX8, unmated 1m/24h
- * Connector
- Housing: Thermoplastic, Black
- Pin: Copper alloy, Gold plated
- Gasket: Rubber, Gray
- Shield: Metal
- * Nut: Metal
- * Washer: Metal
- * Gasket: Rubber, Gray
- * For panel thickness max: 5.0mm
- * Gasket, nut and washer are packed separately in pe bag

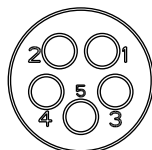
△ HB20-XXPMFS-SN8001
XX: No. Of Pin

△

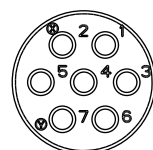
HB20-04PMFS-SN8001	29.0		
HB20-05PMFS-SN8001		29.8	
HB20-07PMFS-SN8001		29.8	33.0
Item No.	A	B	C



4P



5P



7P

△ Pin Assignments Front View

UNIT:mm



TOLERANCE

.X ±0.25
.XX ±0.1
.XXX ±0.05
ANGLES ±1°

TITLE

O SEN, M20 500H,10A
RECEPTACLE, M, F, SOLDER

SCALE

1:1

SIZE

A4

SHEET

OF

1

REV.

E

WC-REV.

A.3

Ⓢ Inspection item



Amphenol LTW

安費諾亮泰企業股份有限公司

ITEM NO

DWG. NO

△ HB20-XXPMFS-SN8001

CUSTOMER

ALTW

DRAWN BY

Vicky

CHECKED BY

Rita

APPROVED BY

Lisa

DATE

2016-05-03

DATE

2016-05-03

DATE

2016-05-03