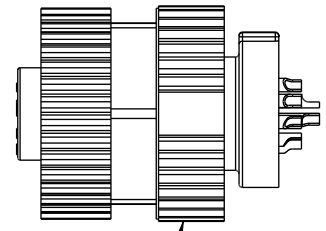


THIS DOCUMENT IS SUBJECT TO CHANGE WITHOUT NOTICE. IT IS CONFIDENTIAL AND A PROPERTY OF Amphenol LTW. DISCLOSURE TO THIRD PARTY HAS TO BE AUTHORIZED BY Amphenol LTW.

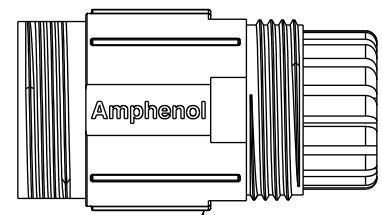
REV.	ECN NO.	DATE	SIGN	DESCRIPTION
C	C201453	2020/10/07	Ruru	△C X5
D	C210561	2021/04/08	Vicky	△D X2
E	C221877	2022/12/09	Ruru	△E X1

△
M12A-XXBFFA-SL7001

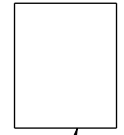
XX: No. Of Pin



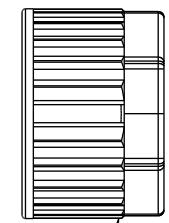
Connector



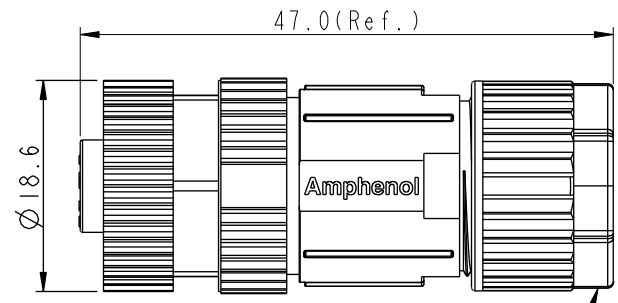
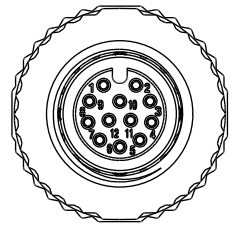
Clamp Ring



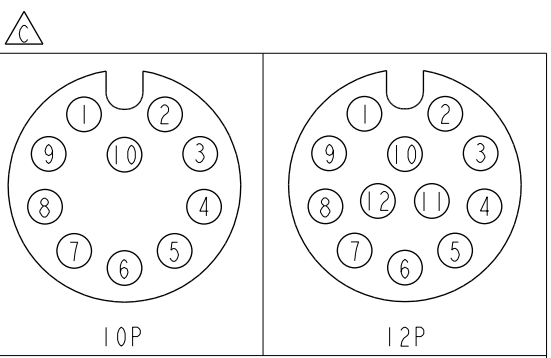
Seal



Sealing Nut



16.0 Hex. (Metal Nut) 16.0 Hex.



Pin Assignments Front View

- △C △D
Note:
- * RoHS Compliant
 - * Ⓞ Important Dimension
 - △E * Waterproof rate: IP67, mated
 - * Connector
 - Housing: Thermoplastic, Black
 - Pin: Copper alloy, Gold plated
 - Extension Nut: Thermoplastic, Black
 - Nut: Metal
 - O-Ring: Rubber, Gray
 - * Clamp Ring: Thermoplastic, Black
 - * Sealing Nut: Thermoplastic, Black
 - △B * Seal: Rubber, Gray, OD:∅4.0mm-∅8.0mm
 - * One set unassembled in one pe bag

UNIT:mm		TITLE	N SEN, M12 A, SCREW CABLE W/O SR, F, F, FI SOLDER	
TOLERANCE		SCALE	SIZE	SHEET
.X ±0.25		1:1	A4	1 OF 1
.XX ±0.1		REV.	WC-REV.	
.XXX ±0.05		E	A.3	
ANGLES ±1°		Ⓞ: Inspection item		

Amphenol LTW
安費諾亮泰企業股份有限公司

ITEM NO	DRAWN BY	DATE
	Yulong_wang	2016-07-22
DWG NO	CHECKED BY	DATE
△C M12A-XXBFFA-SL7001	Jinhai	2016-07-22
CUSTOMER	APPROVED BY	DATE
ALTW	Jerry	2016-07-22