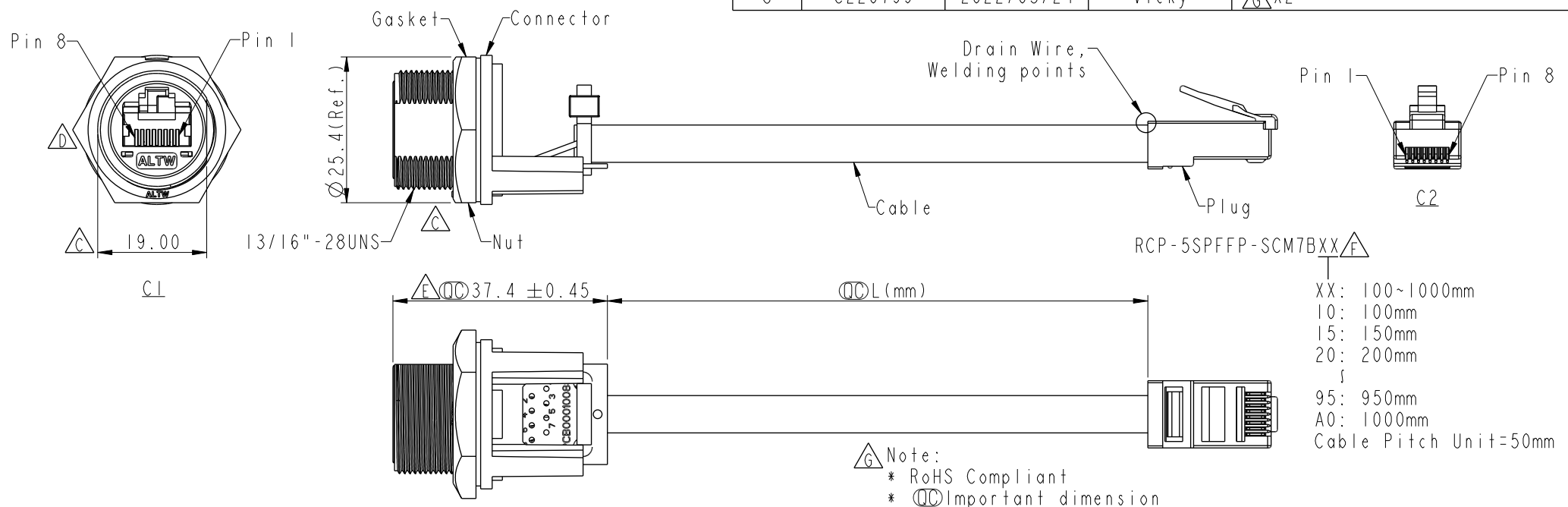


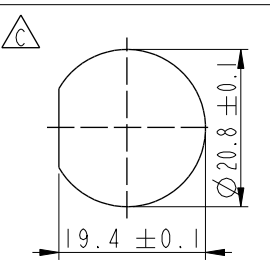
THIS DOCUMENT IS SUBJECT TO CHANGE WITHOUT NOTICE. IT IS CONFIDENTIAL AND A PROPERTY OF Amphenol LTW. DISCLOSURE TO THIRD PARTY HAS TO BE AUTHORIZED BY Amphenol LTW.

REV.	ECN NO.	DATE	SIGN	DESCRIPTION
E	LEN1810017~024	2017/11/28	Jalam	Modify The Tolerance
F	E191612	2019/09/16	Ruru	Drawing Code Unified Writing
G	C220799	2022/05/24	Vicky	△G X2



- Note:**
- \* RoHS Compliant
  - \*  $\varnothing$  Important dimension
  - \* C1  
Waterproof rate: IPX7, mated  
Housing: Thermoplastic, Black, RJ45 jack, Shielded  
Nut: Thermoplastic, Black  
Gasket: Rubber, Gray
  - \* C2  
Waterproof rate: Non-Waterproof  
Plug: RJ45, Shielded
  - \* Use with waterproof cap or dust cap  
Panel thickness max: 3.0mm
  - \* Use without waterproof cap or dust cap  
Panel thickness max: 4.2mm
  - \* Gasket and nut are assembled on connectors
  - \* Cable: Cat.5E, 24#\*4P+MY+D+AL, PVC Jacket, Black, OD6.5mm
  - \* Cable length tolerance: 100mm:  $\pm 10$ mm  
100mm < L  $\leq$  300mm:  $\pm 15$ mm  
300mm < L  $\leq$  1000mm:  $\pm 20$ mm

Shield	Drain Wire	接地線	Shield	
8	Brown	棕	8	Twist
7	White/Brown	白/棕	7	
6	Green	綠	6	Twist
5	White/Blue	白/藍	5	
4	Blue	藍	4	Twist
3	White/Green	白/綠	3	
2	Orange	橘	2	Twist
1	White/Orange	白/橘	1	
C1	Wire Color		C2	
		Pin Out		



UNIT: mm	$\varnothing$	$\nabla$	TITLE RJ, C PLASTIC, C5E SHLD FRONT FASTENED, F, PNL W/CABLE, SCREW
TOLERANCE .X $\pm 0.25$ .XX $\pm 0.1$ .XXX $\pm 0.05$ ANGLES $\pm 1^\circ$	SCALE 1:1	SIZE A4	SHEET 1 OF 1
REV. G	WC-REV. B.6	$\varnothing$ Inspection item	

**Amphenol LTW**  
安費諾亮泰企業股份有限公司

ITEM NO RCP-5SPFFP-SCM7BXX	DRAWN BY Ruru	DATE 2019-09-16
DWG NO RCP-5SPFFP-SCM7BXX	CHECKED BY Rita	DATE 2019-09-16
CUSTOMER ALTW	APPROVED BY Max	DATE 2019-09-16