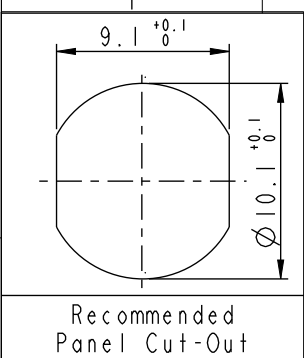


THIS DOCUMENT IS SUBJECT TO CHANGE WITHOUT NOTICE. IT IS CONFIDENTIAL AND A PROPERTY OF Amphenol LTW. DISCLOSURE TO THIRD PARTY HAS TO BE AUTHORIZED BY Amphenol LTW.

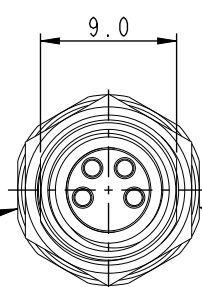
REV.	ECN NO.	DATE	SIGN	DESCRIPTION
A		2022-10-26	Yuwei Chou	Change Rev.04 To Rev.A
B	C221764	2022-11-02	Yuwei Chou	$\triangle B$ *2

F
E
D
C
B
A

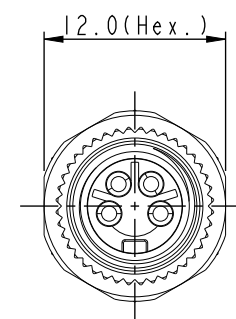
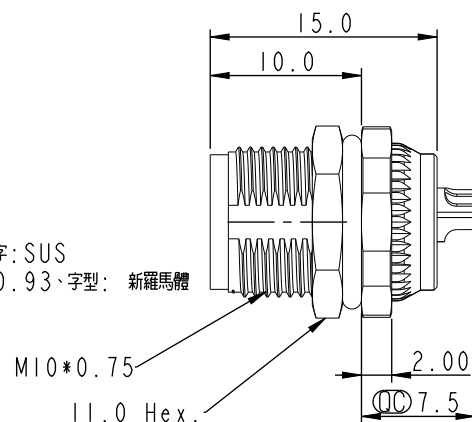


Recommended
Panel Cut-Out

雷射印字工單後6碼
字高: 0.93、字型: 新羅馬體

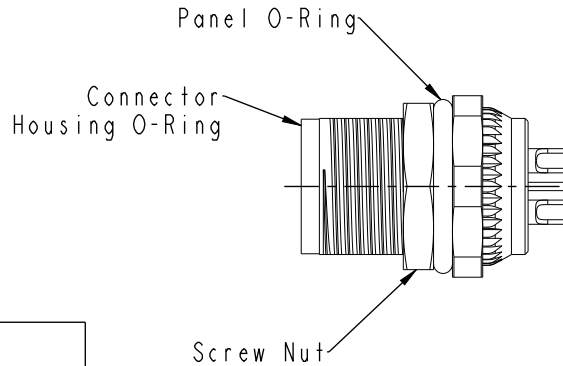


雷射印字: SUS
字高: 0.93、字型: 新羅馬體



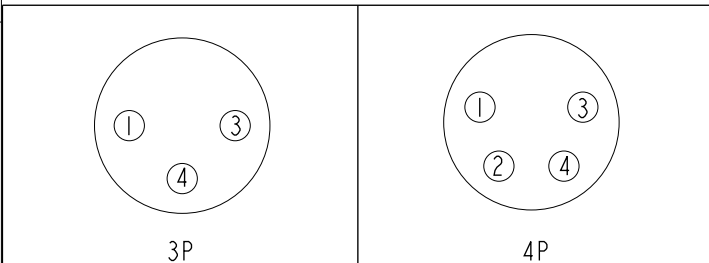
SM8-XXPFFS-SF8001

XX: No. Of Pin



Note:

- * CC Important Dimension.
- * $\triangle B$ Waterproof Rate: IP68, Unmated 1m/24h.
- * Housing: Thermoplastic, Black.
- * Female Pin: Copper Alloy, Gold Plated.
- * Shell: Metal.
- * Screw Nut: Metal.
- * Panel O-Ring: Rubber, Green.
- * Housing O-Ring: Rubber, Green.
- * $\triangle B$ For panel thickness: 2.0~4.5mm.
- * Nut is packed separately in pe bag.



Pin Assignmen Front View

UNIT:mm		TITLE N SEN, SM8-STAINLESS, SCREW RECEPTACLE, F, F, SOLDER			
TOLERANCE		SCALE	SIZE	SHEET	OF
.X .XX .XXX ANGLES	± 0.25 ± 0.1 ± 0.05 $\pm 1^\circ$	Free	A4	1	1
		REV.	WC-REV.	CC : Inspection item	
		B	A.1		

Amphenol LTW
安費諾亮泰企業股份有限公司

ITEM NO	DRAWN BY	DATE
	Yuwei Chou	2022-10-26
DWG NO	CHECKED BY	DATE
SM8-XXPFFS-SF8001	Aric Ko	2022-10-26
CUSTOMER	APPROVED BY	DATE
ALTW	Max Yang	2022-10-26