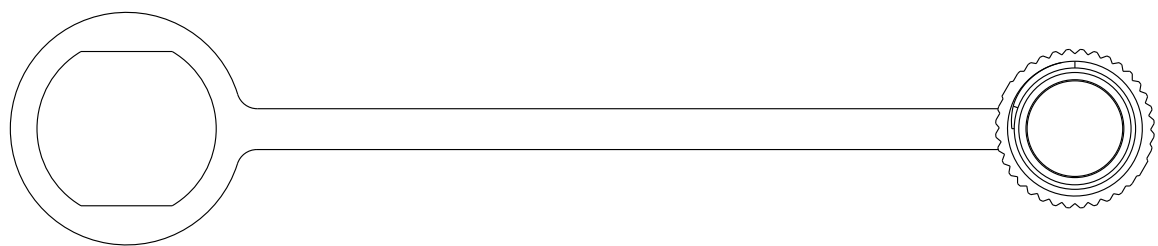
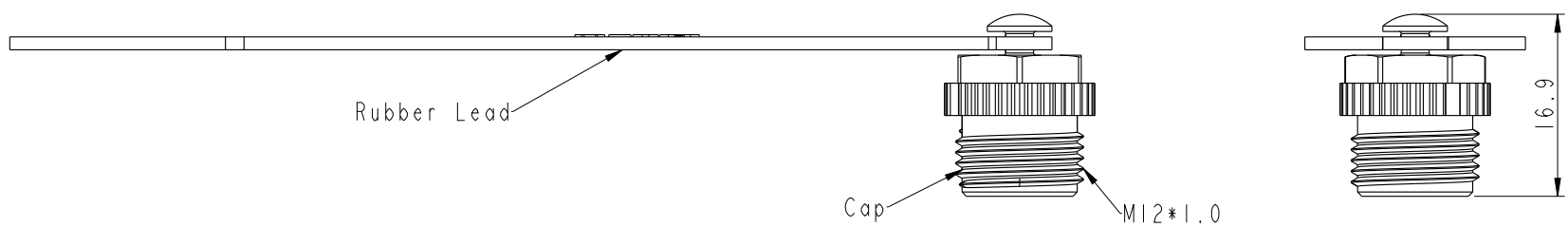
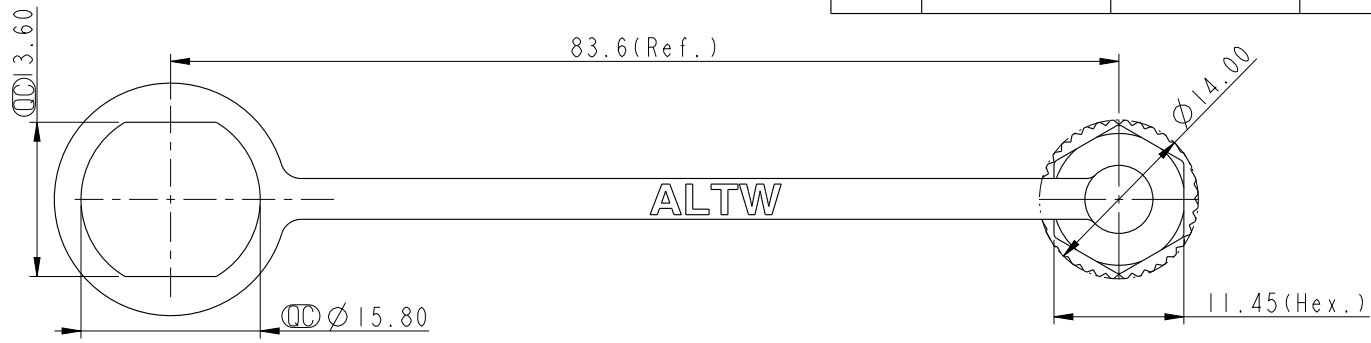


THIS DOCUMENT IS SUBJECT TO CHANGE WITHOUT NOTICE. IT IS CONFIDENTIAL AND A PROPERTY OF Amphenol LTW. DISCLOSURE TO THIRD PARTY HAS TO BE AUTHORIZED BY Amphenol LTW.

REV.	ECN NO.	DATE	SIGN	DESCRIPTION
B	C221542	2022/10/08	Zhi Cheng	△B *1



- △B Note:
- \* Ⓞ Important Dimension
  - \* Waterproof Rate: IPX7
  - \* Cap: Thermoplastic, Black
  - \* Rubber Lead: Rubber, Black

UNIT: mm		
TOLERANCE	±0.25	
.X	±0.1	
.XX	±0.05	
.XXX	±1	
ANGLES		

TITLE ACC, SEN SCREW, W/RB LEAD			
SCALE 1:1	SIZE A4	SHEET 1 OF 1	
REV. B	WC-REV. .0	Ⓞ: Inspection item	

**Amphenol LTW**  
安費諾亮泰企業股份有限公司

ITEM NO. CAP-WBDFSPC1	DRAWN BY Zhi Cheng	DATE 2022-07-18
DWG NO. CAP-WBDFSPC1	CHECKED BY Feng_Li	DATE 2022-07-18
CUSTOMER ALTW	APPROVED BY Jerry	DATE 2022-07-18